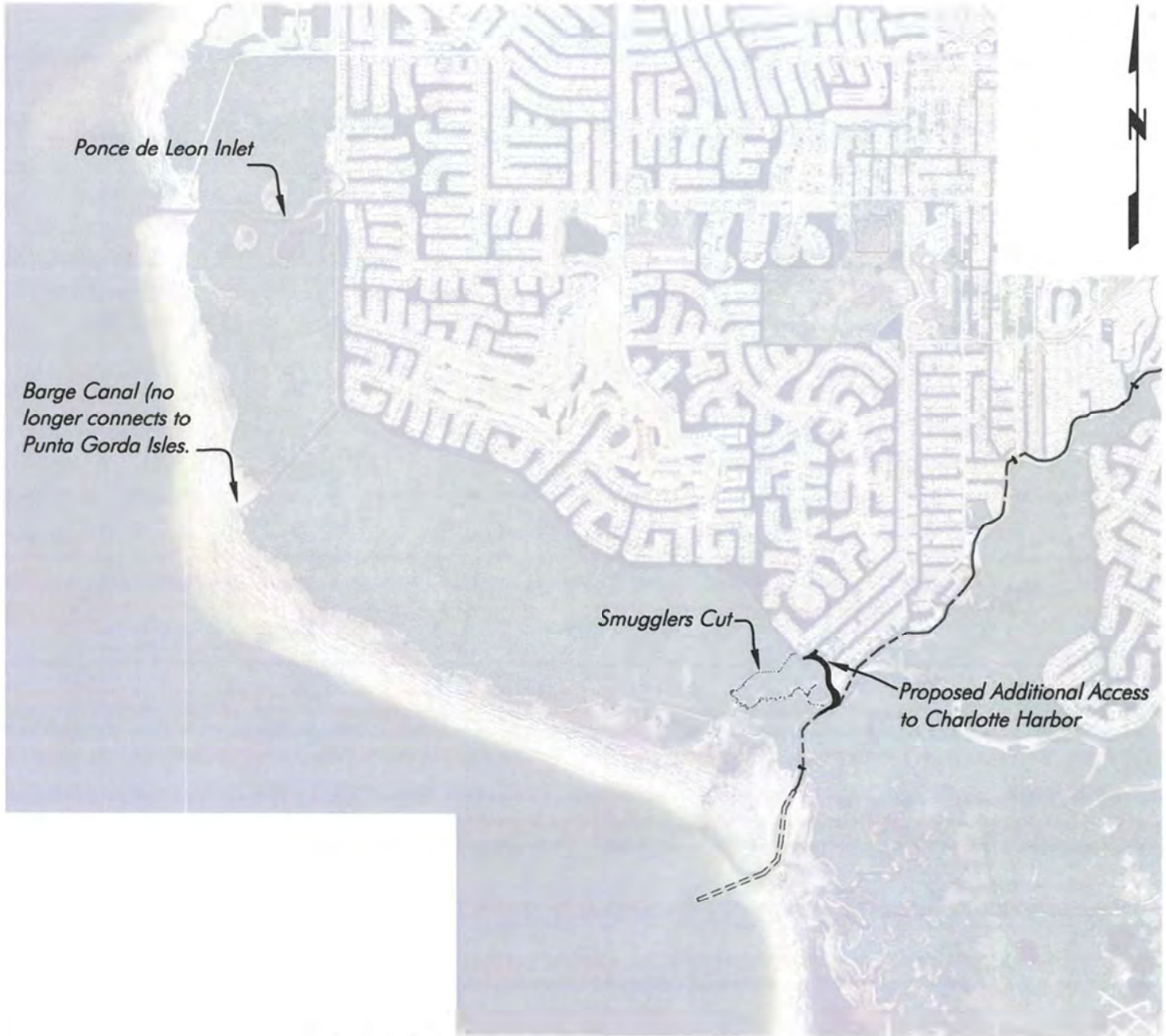


SECTION: 25
TOWNSHIP: 41 S
RANGE: 22 E

0 1500 3000
SCALE FEET

LABINS Aerials 2011



Access to Punta Gorda

Scale 1" = 3,000'

SAJ-2016-02715
RCVD ELECTRONICALLY
 03-APR-2018
 Tampa Regulatory Office

SAJ-2016-02715
 Additional Channel Access
 to Charlotte Harbor
 5-16-17 Page 1 of 19

April 02, 2018 5:55:51 p.m.
 Drawing: PNTAGRDA1MASTER4-2-18.DWG

PERMIT USE ONLY, NOT FOR CONSTRUCTION



1938 Hill Avenue, Fort Myers, Florida 33901
 Office: 239-334-6870 Fax: 239-334-7810
 MARINE and ENVIRONMENTAL CONSULTANTS

4-2-18

hjmw

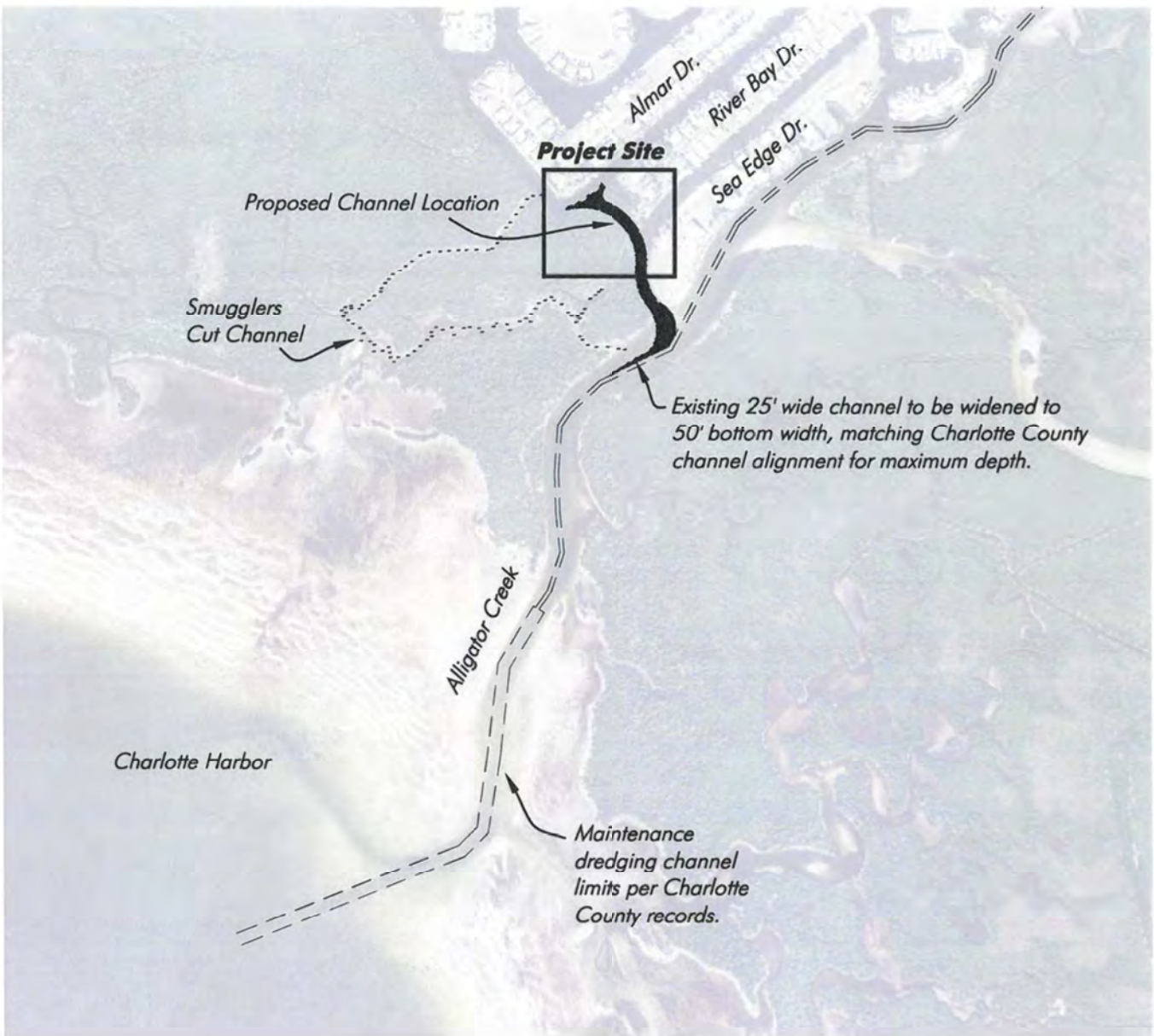
**City of Punta
Gorda**

SHEET

SECTION: 25
TOWNSHIP: 41 S
RANGE: 22 E

0 500 1000
SCALE FEET

Charlotte County Aerial 2011



Overall Site Plan

SCALE: 1" = 1000'

SAJ-2016-02715
RCVD ELECTRONICALLY
03-APR-2018
Tampa Regulatory Office

SAJ-2016-02715
Additional Channel Access
to Charlotte Harbor
5-16-17 Page 2 of 19

April 02, 2018 5:55:51 p.m.
Drawing: PNTAGROA1MASTER4-2-18.DWG

PERMIT USE ONLY, NOT FOR CONSTRUCTION



1938 Hill Avenue, Fort Myers, Florida 33901
Office: 239-334-6870 Fax: 239-334-7810
MARINE and ENVIRONMENTAL CONSULTANTS

4-2-18

hjmw

**City of
Punta Gorda**

SHEET

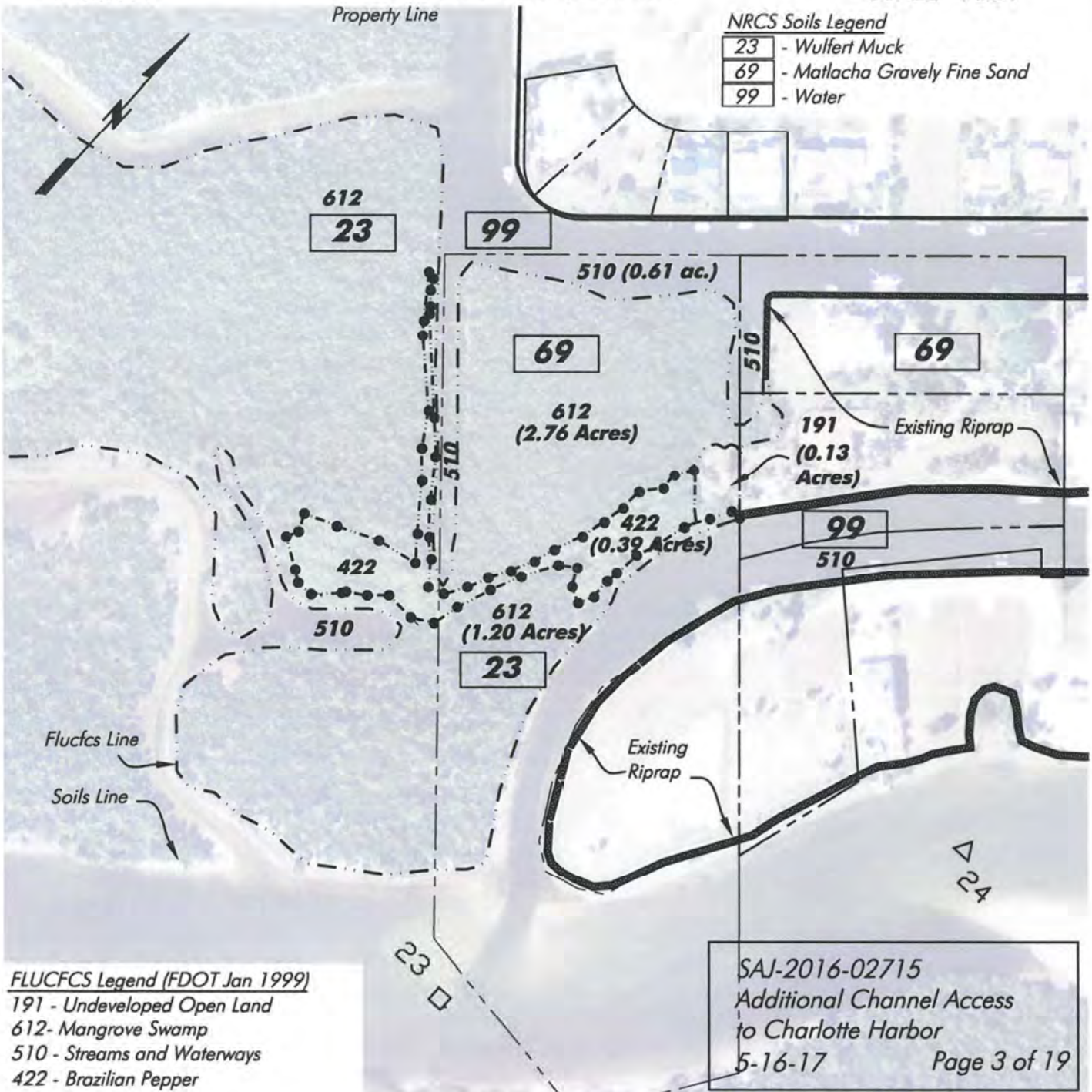
SECTION: 25
TOWNSHIP: 41 S
RANGE: 22 E

Charlotte County Aerial 2011



NRCS Soils Legend

23	- Wulfert Muck
69	- Matlacha Gravely Fine Sand
99	- Water



FLUCFCS Legend (FDOT Jan 1999)

- 191 - Undeveloped Open Land
- 612- Mangrove Swamp
- 510 - Streams and Waterways
- 422 - Brazilian Pepper

SAJ-2016-02715
Additional Channel Access
to Charlotte Harbor
5-16-17 Page 3 of 19

GPS data points from field survey
outlining extents of mangrove wetlands

FLUCCS Line

Soils Line

Soils information per U.S.D.A. Soil Conservation Service - Soil Survey of
Charlotte County, Florida. Wetland extents field verified by HWA on 7-23-16

PERMIT USE ONLY, NOT FOR CONSTRUCTION

FLUCCS & Soils Map

SCALE: 1" = 200'

SAJ-2016-02715
RCVD ELECTRONICALLY
03-APR-2018
Tampa Regulatory Office

April 02, 2018 5:55:51 p.m.
Drawing: PNTAGRA1MASTER4-2-18.DWG



1938 Hill Avenue, Fort Myers, Florida 33901
Office: 239-334-6870 Fax: 239-334-7810
MARINE and ENVIRONMENTAL CONSULTANTS

4-2-18

hjmw

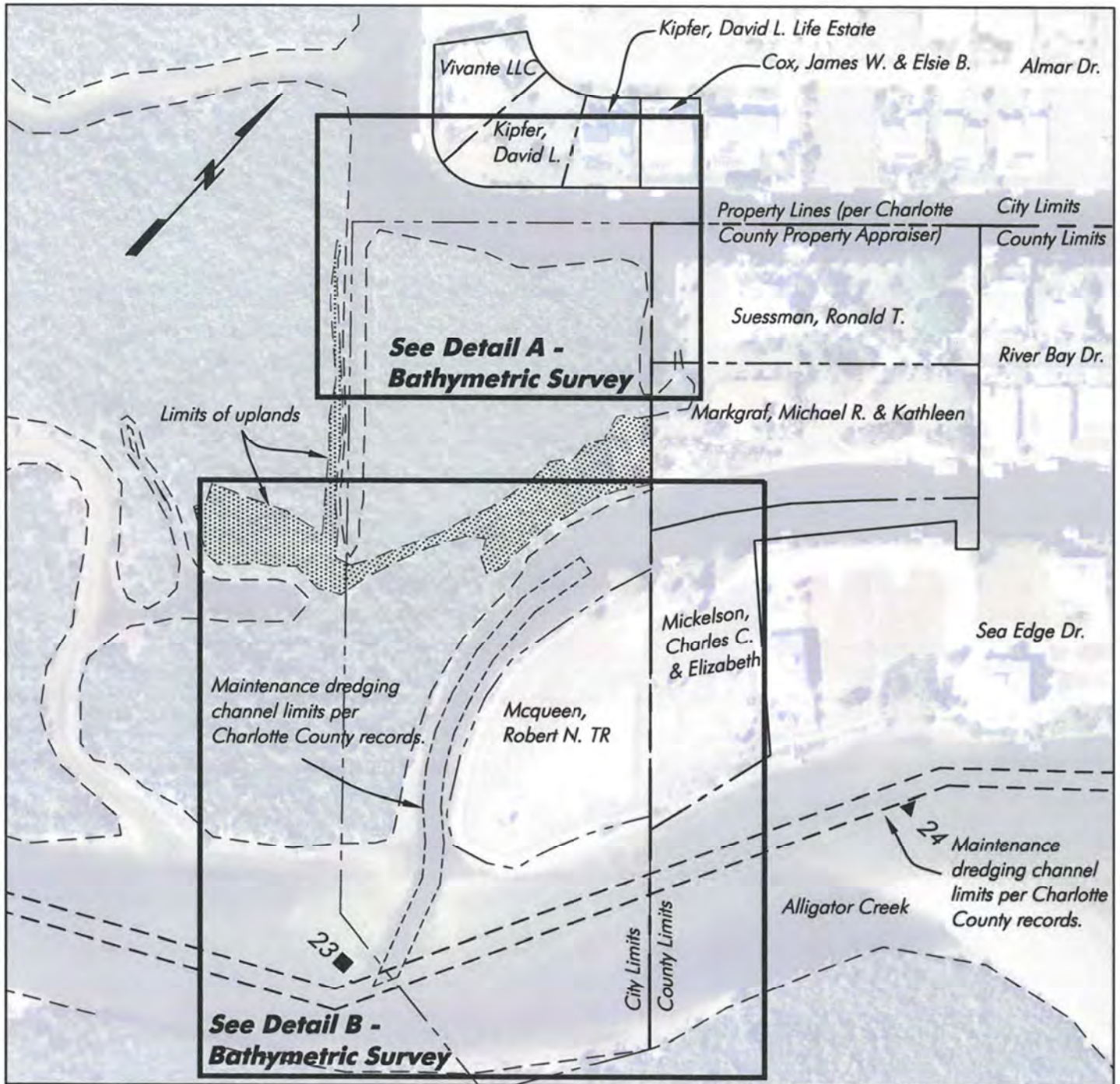
**City of
Punta Gorda**

SHEET

SAJ-2016-02715
RCVD ELECTRONICALLY
03-APR-2018
Tampa Regulatory Office

SECTION: 25
TOWNSHIP: 41 S
RANGE: 22 E

Charlotte County Aerial 2011



Existing Site Plan

SCALE: 1" = 200'

SAJ-2016-02715

Additional Channel Access
to Charlotte Harbor

5-16-17

Page 4 of 19

Note: Bathymetry references MLW,
collected by Hans Wilson & Assoc. Inc.
on 7-8-14, per Tide Sta. 872-5744.

April 02, 2018 5:55:51 p.m.
Drawing: PNTAGRDA1MASTER4-2-18.DWG

PERMIT USE ONLY, NOT FOR CONSTRUCTION



1938 Hill Avenue, Fort Myers, Florida 33901
Office: 239-334-6870 Fax: 239-334-7810
MARINE and ENVIRONMENTAL CONSULTANTS

4-2-18

hjmw

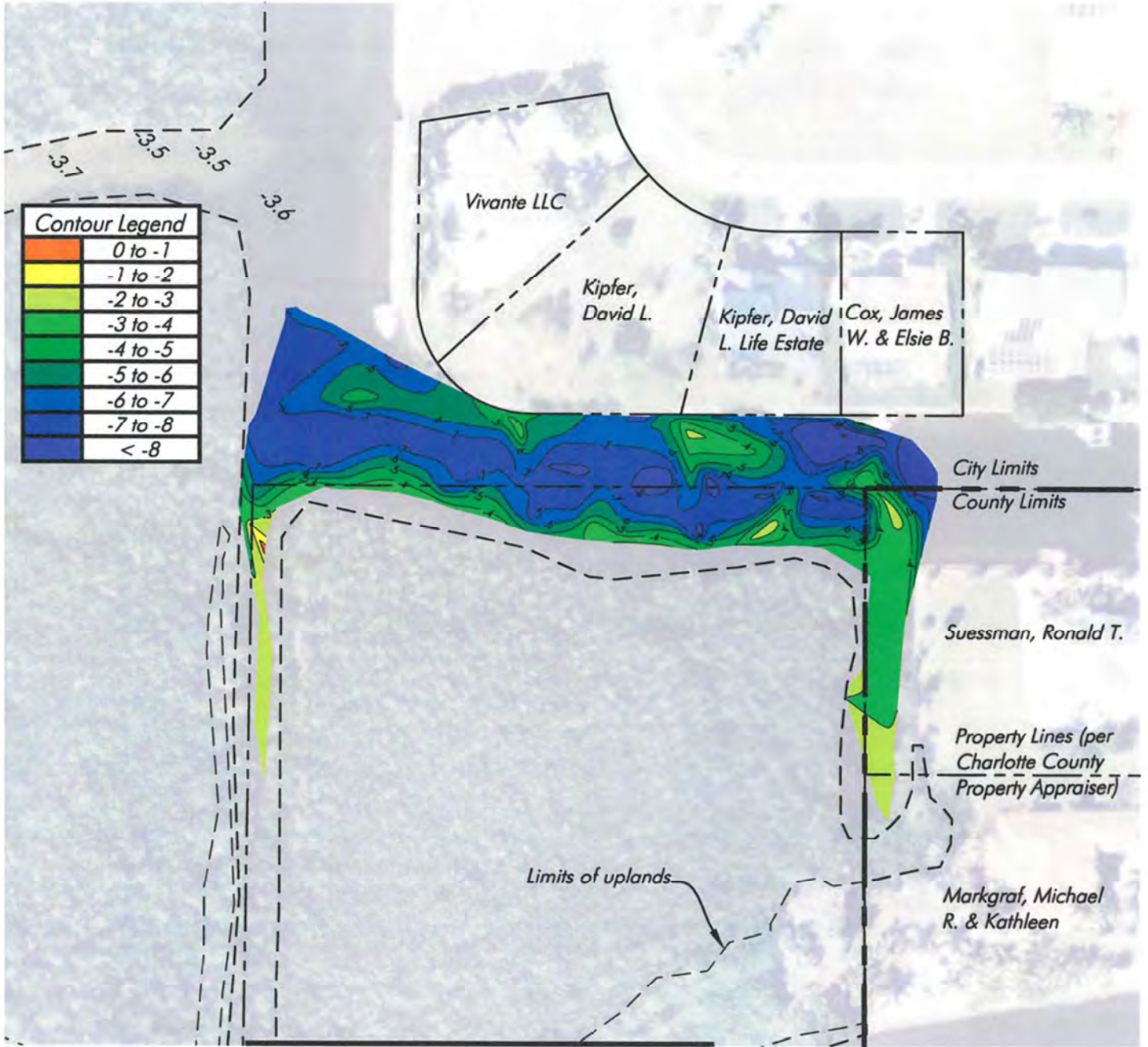
**City of
Punta Gorda**

SHEET

SECTION: 25
TOWNSHIP: 41 S
RANGE: 22 E



Charlotte County Aerial 2011



Contour Legend	
	0 to -1
	-1 to -2
	-2 to -3
	-3 to -4
	-4 to -5
	-5 to -6
	-6 to -7
	-7 to -8
	< -8

Detail A - Bathymetric Survey

SCALE: 1" = 100'

Note: Bathymetry references MLW, collected by Hans Wilson & Assoc. Inc. on 7-8-14, per Tide Sta. 872-5744.

SAJ-2016-02715
RCVD ELECTRONICALLY
03-APR-2018
Tampa Regulatory Office

SAJ-2016-02715
Additional Channel Access
to Charlotte Harbor
5-16-17 Page 5 of 19

April 02, 2018 5:55:51 p.m.
Drawing: PNTAGRDA1MASTER4-2-18.DWG

PERMIT USE ONLY, NOT FOR CONSTRUCTION



1938 Hill Avenue, Fort Myers, Florida 33901
Office: 239-334-6870 Fax: 239-334-7810
MARINE and ENVIRONMENTAL CONSULTANTS

4-2-18

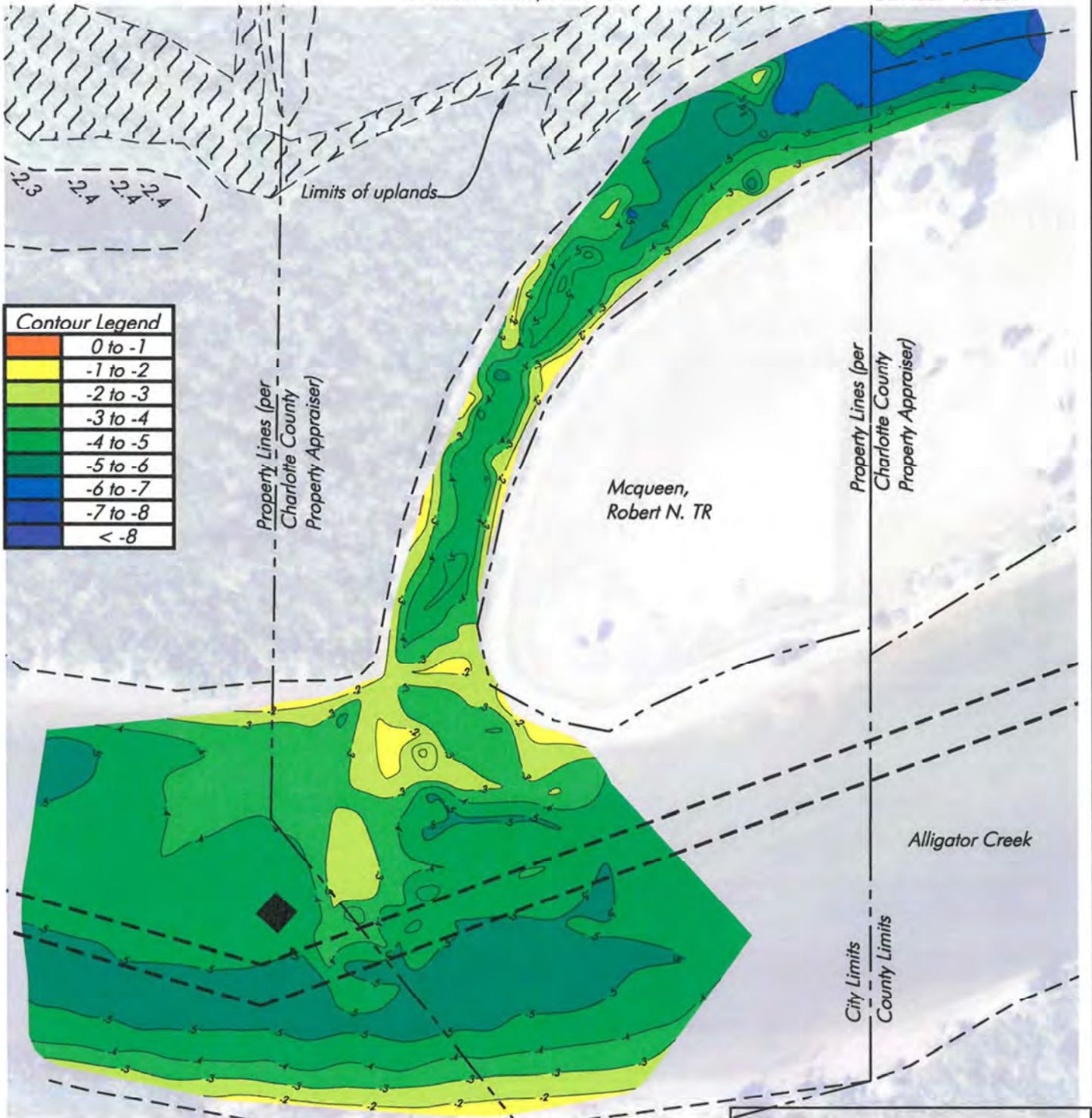
hjmw

**City of
Punta Gorda**

SHEET

SECTION: 25 TOWNSHIP: 41 S RANGE: 22 E

Charlotte County Aerial 2011



Contour Legend	
Orange	0 to -1
Yellow	-1 to -2
Light Green	-2 to -3
Green	-3 to -4
Dark Green	-4 to -5
Blue-Green	-5 to -6
Blue	-6 to -7
Dark Blue	-7 to -8
Very Dark Blue	< -8

Detail B - Bathymetric Survey

SCALE: 1" = 100'

SAJ-2016-02715
 Additional Channel Access
 to Charlotte Harbor
 5-16-17 Page 6 of 19

Note: Bathymetry references MLW, collected by Hans Wilson & Assoc. Inc. on 7-8-14, per Tide Sta. 872-5744.

PERMIT USE ONLY, NOT FOR CONSTRUCTION

April 02, 2018 5:55:51 p.m.
 Drawing: PNTAGRDA1MASTER4-2-18.DWG



1938 Hill Avenue, Fort Myers, Florida 33901
 Office: 239-334-6870 Fax: 239-334-7810
 MARINE and ENVIRONMENTAL CONSULTANTS

4-2-18

hjmw

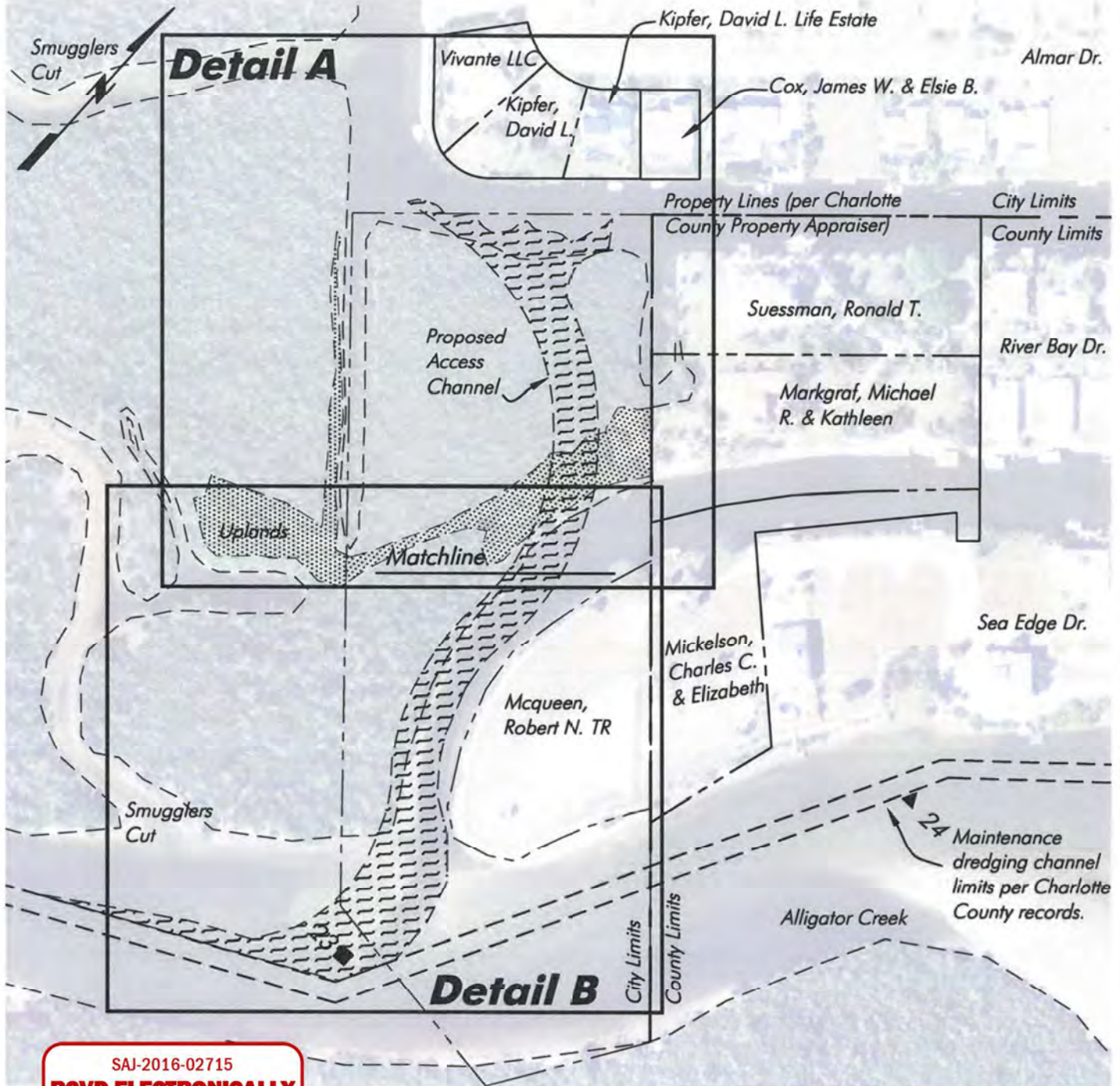
**City of
 Punta Gorda**

SHEET

SECTION: 25
TOWNSHIP: 41 S
RANGE: 22 E

Charlotte County Aerial 2011

0 100 200
SCALE FEET



SAJ-2016-02715
RCVD ELECTRONICALLY
03-APR-2018
Tampa Regulatory Office

Proposed Site Plan

SCALE: 1" = 200'

SAJ-2016-02715
Additional Channel Access
to Charlotte Harbor
5-16-17 Page 7 of 19

Note: Bathymetry references MLW,
collected by Hans Wilson & Assoc. Inc.
on 7-8-14, per Tide Sta. 872-5744.

PERMIT USE ONLY, NOT FOR CONSTRUCTION

April 02, 2018 5:55:51 p.m.
Drawing: PNTAGRDA1MASTER4-2-18.DWG



1938 Hill Avenue, Fort Myers, Florida 33901
Office: 239-334-6870 Fax: 239-334-7810
MARINE and ENVIRONMENTAL CONSULTANTS

4-2-18

hjmw

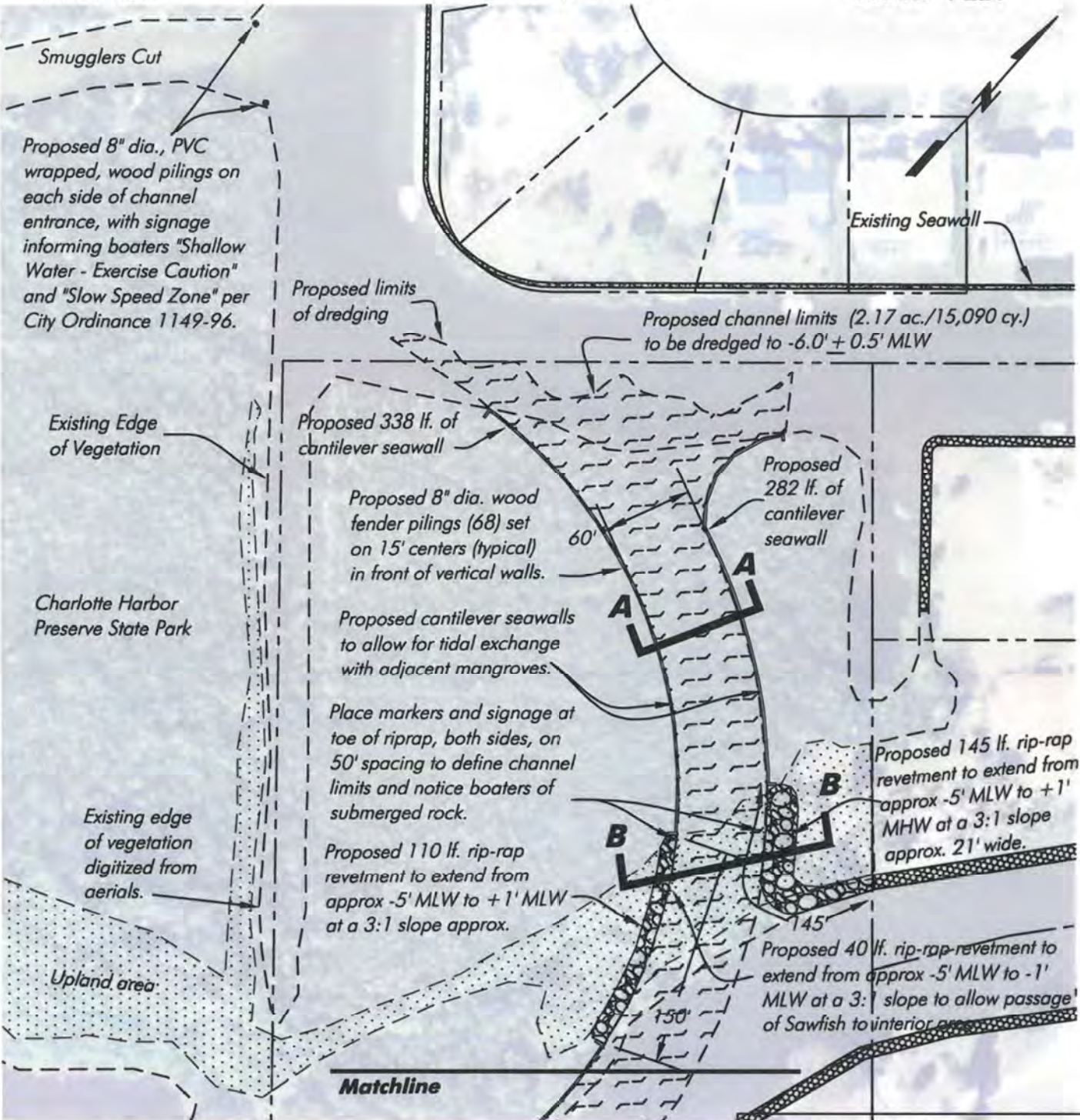
**City of
Punta Gorda**

SHEET

SECTION: 25
 TOWNSHIP: 41 S
 RANGE: 22 E



Charlotte County Aerial 2011



Detail A - Proposed Channel

SCALE: 1" = 100'

Note: Bathymetry references MLW, collected by Hans Wilson & Assoc. Inc. on 7-8-14, per Tide Sta. 872-5744.

SAJ-2016-02715
 Additional Channel Access
 to Charlotte Harbor
 5-16-17 Page 8 of 19

April 02, 2018 5:55:51 p.m.
 Drawing: PNTAGRDA1MASTER4-2-18.DWG

PERMIT USE ONLY, NOT FOR CONSTRUCTION



1938 Hill Avenue, Fort Myers, Florida 33901
 Office: 239-334-6870 Fax: 239-334-7810
 MARINE and ENVIRONMENTAL CONSULTANTS

1-7-18

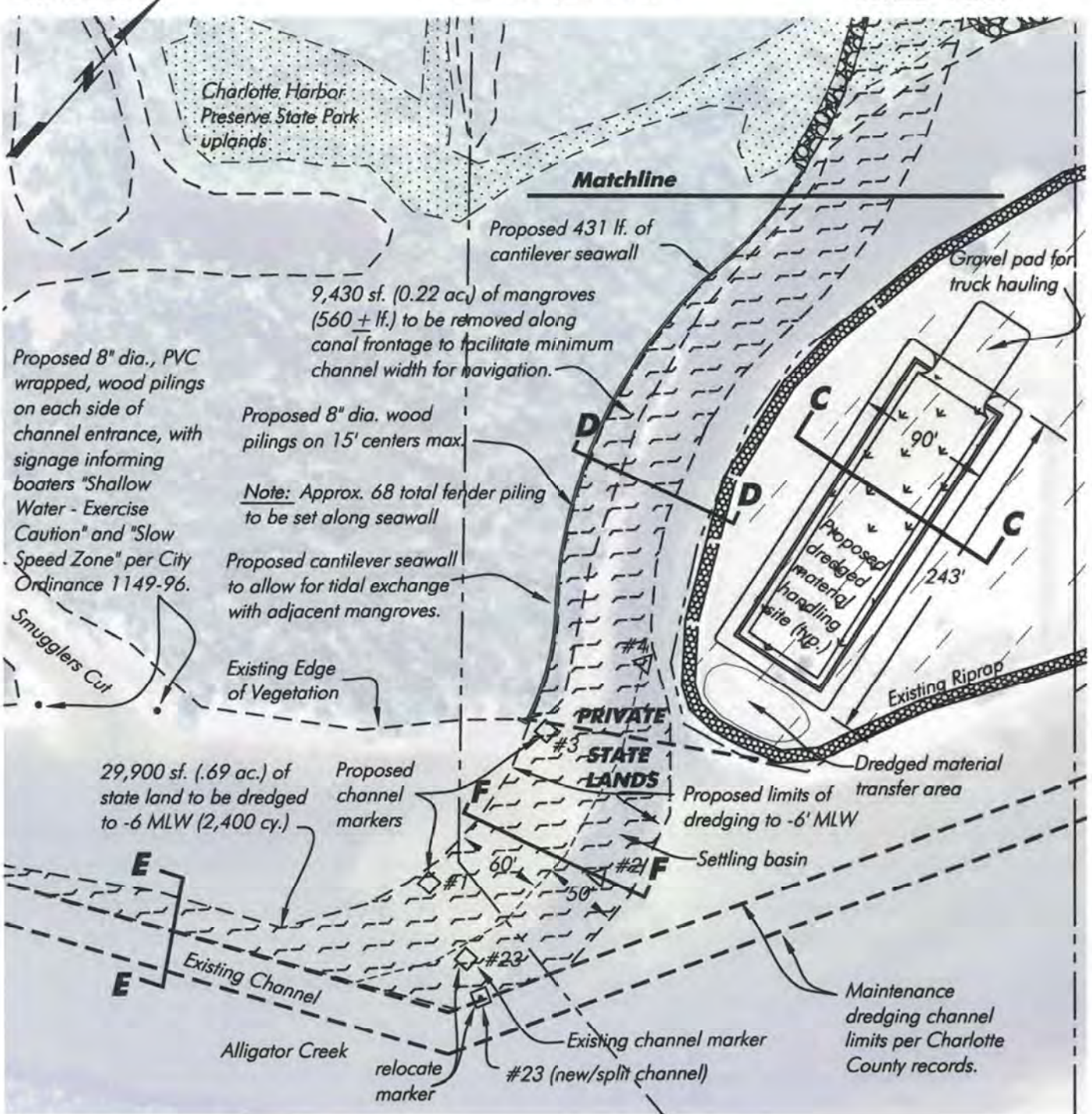
hjmw

**City of
 Punta Gorda**

SHEET

SECTION: 25
 TOWNSHIP: 41 S
 RANGE: 22 E

Charlotte County Aerial 2011



Detail B - Proposed Channel

SCALE: 1" = 100'

SAJ-2016-02715
 Additional Channel Access
 to Charlotte Harbor
 5-16-17 Page 9 of 19

Note: Bathymetry references MLW, collected by Hans Wilson & Assoc. Inc. on 7-8-14, per Tide Sta. 872-5744.

April 02, 2018 5:55:51 p.m.
 Drawing: PNTAGROA1MASTER4-2-18.DWG

PERMIT USE ONLY, NOT FOR CONSTRUCTION



1938 Hill Avenue, Fort Myers, Florida 33901
 Office: 239-334-6870 Fax: 239-334-7810
 MARINE and ENVIRONMENTAL CONSULTANTS

4-2-18

hjmw

**City of
 Punta Gorda**

SHEET

SAJ-2016-02715
RCVD ELECTRONICALLY
03-APR-2018
Tampa Regulatory Office

SECTION: 25
TOWNSHIP: 41 S
RANGE: 22 E

Charlotte County Aerial 2011

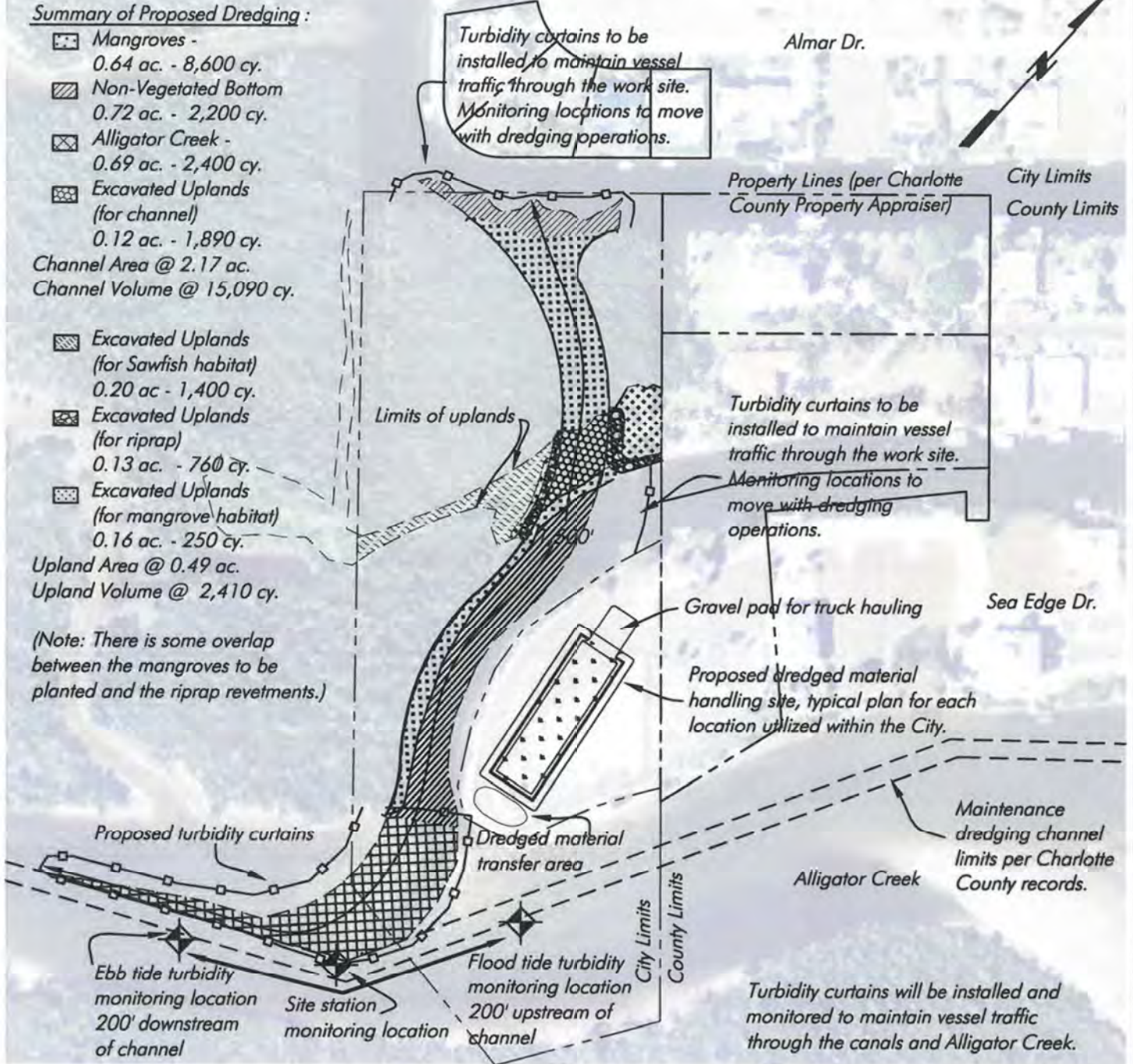


Summary of Proposed Dredging :

- Mangroves -
0.64 ac. - 8,600 cy.
 - Non-Vegetated Bottom
0.72 ac. - 2,200 cy.
 - Alligator Creek -
0.69 ac. - 2,400 cy.
 - Excavated Uplands
(for channel)
0.12 ac. - 1,890 cy.
- Channel Area @ 2.17 ac.
Channel Volume @ 15,090 cy.

- Excavated Uplands
(for Sawfish habitat)
0.20 ac - 1,400 cy.
 - Excavated Uplands
(for riprap)
0.13 ac. - 760 cy.
 - Excavated Uplands
(for mangrove habitat)
0.16 ac. - 250 cy.
- Upland Area @ 0.49 ac.
Upland Volume @ 2,410 cy.

(Note: There is some overlap between the mangroves to be planted and the riprap revetments.)



Proposed Dredging Summary Plan

SCALE: 1" = 200'

Note: Bathymetry references MLW, collected by Hans Wilson & Assoc. Inc. on 7-8-14, per Tide Sta. 872-5744.

PERMIT USE ONLY, NOT FOR CONSTRUCTION

SAJ-2016-02715
Additional Channel Access
to Charlotte Harbor
5-16-17 Page 10 of 19

April 02, 2018 5:55:51 p.m.
Drawing: PNTAGRDA1MASTER4-2-18.DWG



1938 Hill Avenue, Fort Myers, Florida 33901
Office: 239-334-6870 Fax: 239-334-7810
MARINE and ENVIRONMENTAL CONSULTANTS

4-2-18

hjmw

**City of
Punta Gorda**

SHEET

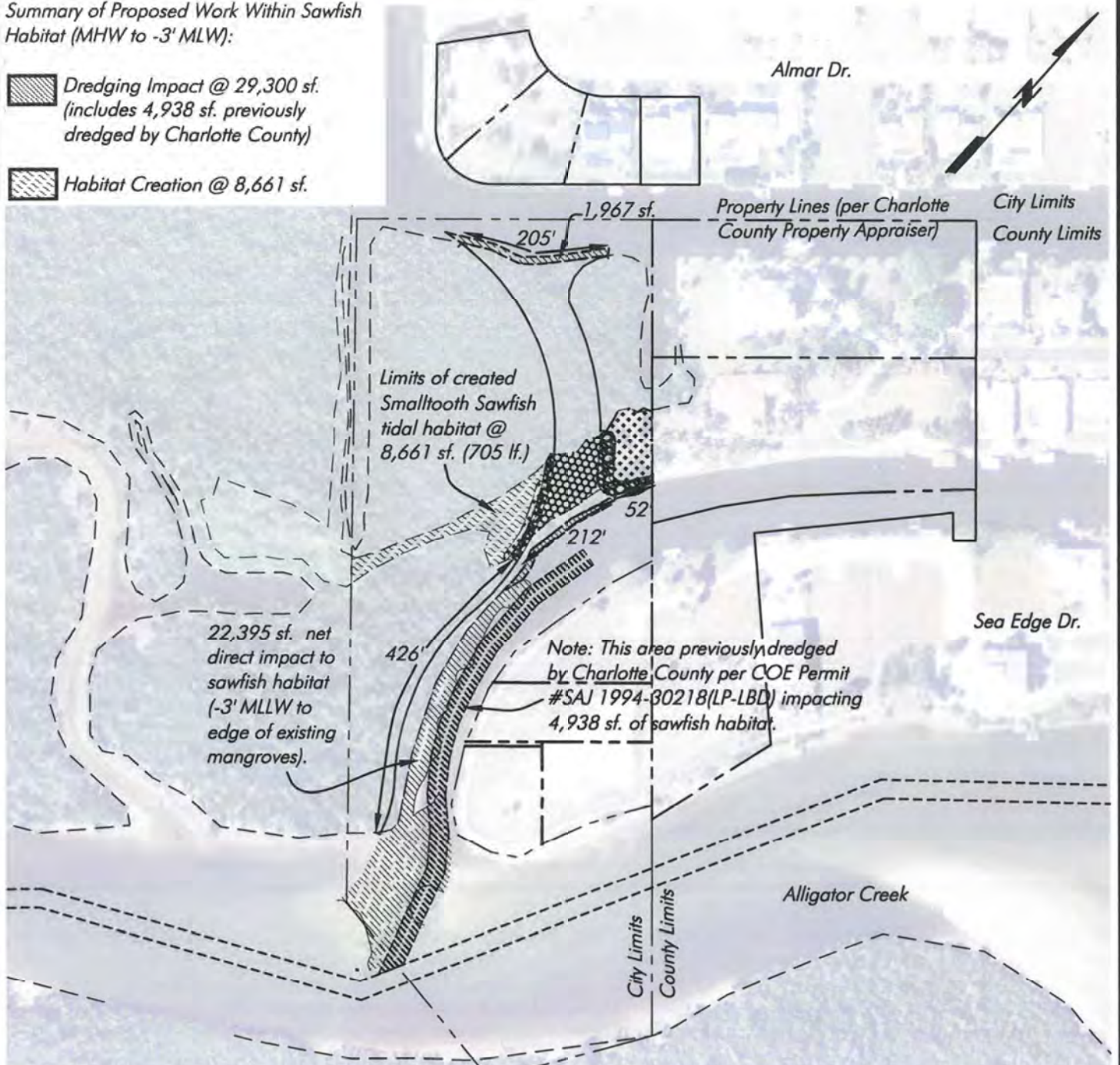
SECTION: 25
TOWNSHIP: 41 S
RANGE: 22 E

Charlotte County Aerial 2011



Summary of Proposed Work Within Sawfish Habitat (MHW to -3' MLW):

- Dredging Impact @ 29,300 sf.
(includes 4,938 sf. previously dredged by Charlotte County)
- Habitat Creation @ 8,661 sf.



Proposed Plan - Sawfish Habitat

SCALE: 1" = 200'

Note: Bathymetry references MLW, collected by Hans Wilson & Assoc. Inc. on 7-8-14, per Tide Sta. 872-5744.

SAJ-2016-02715
RCVD ELECTRONICALLY
03-APR-2018
Tampa Regulatory Office

SAJ-2016-02715
Additional Channel Access
to Charlotte Harbor
5-16-17 Page 11 of 19

April 02, 2018 5:55:51 p.m.
Drawing: PNTAGRDA1MASTER4-2-18.DWG

PERMIT USE ONLY, NOT FOR CONSTRUCTION

1938 Hill Avenue, Fort Myers, Florida 33901
Office: 239-334-6870 Fax: 239-334-7810
MARINE and ENVIRONMENTAL CONSULTANTS

4-2-18
hjmw

**City of
Punta Gorda**

SHEET

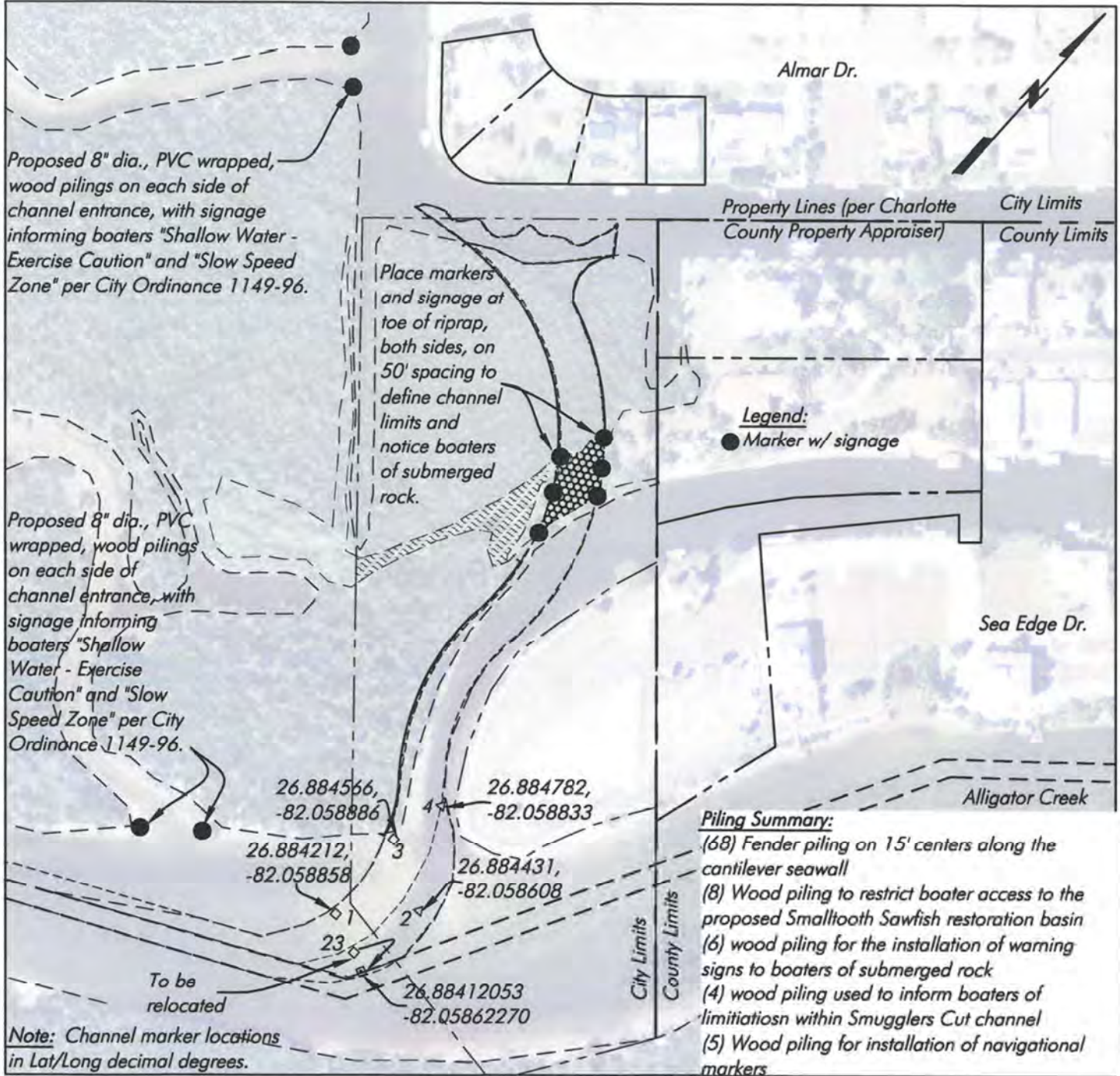
SAJ-2016-02715
RCVD ELECTRONICALLY
 03-APR-2018
 Tampa Regulatory Office

SAJ-2016-02715
 ENCLOSURE 1

SECTION: 25
 TOWNSHIP: 41 S
 RANGE: 22 E

Charlotte County Aerial 2011

0 100 200
 SCALE FEET



Proposed Channel Marker and Signage Plan

Note: Bathymetry references MLW, collected by Hans Wilson & Assoc. Inc. on 7-8-14, per Tide Sta. 872-5744.

SCALE: 1" = 200'

SAJ-2016-02715
 Additional Channel Access to Charlotte Harbor
 5-16-17 Page 12 of 19

April 02, 2018 5:55:51 p.m.
 Drawing: PNTAGRDMASTER4-2-18.DWG

PERMIT USE ONLY, NOT FOR CONSTRUCTION

HWA
 Hans Wilson & Associates
 1938 Hill Avenue, Fort Myers, Florida 33901
 Office: 239-334-6870 Fax: 239-334-7810
 MARINE and ENVIRONMENTAL CONSULTANTS

4-2-18
 hjmw

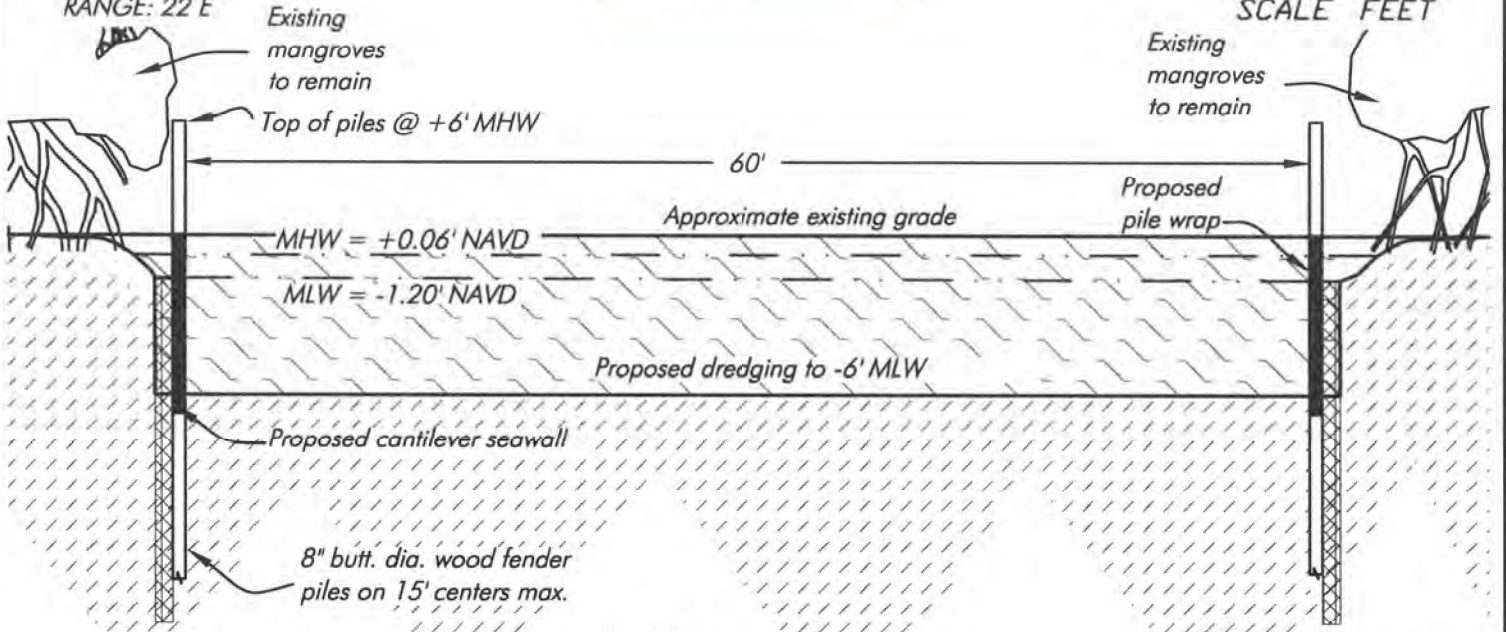
City of Punta Gorda

SHEET

SAJ-2016-02715
RCVD ELECTRONICALLY
03-APR-2018
Tampa Regulatory Office

SECTION: 25
TOWNSHIP: 41 S
RANGE: 22 E

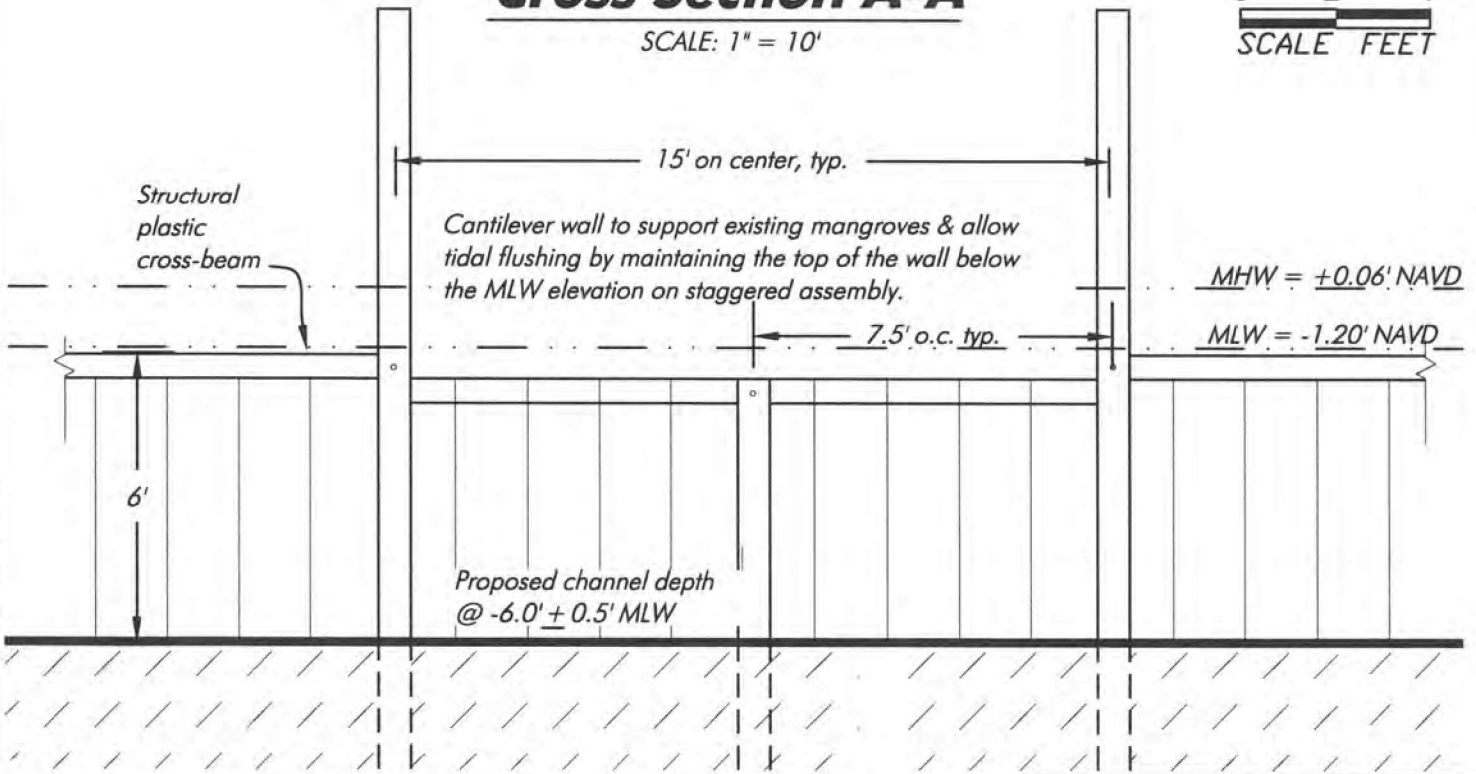
0 5 10
SCALE FEET



Cross Section A-A

SCALE: 1" = 10'

0 2' 4'
SCALE FEET



Cantilever Seawall Detail

SCALE: 1" = 4'

SAJ-2016-02715
Additional Channel Access
to Charlotte Harbor
5-16-17 Page 13 of 19

Note: Bathymetry references MLW,
collected by Hans Wilson & Assoc. Inc.
on 7-8-14, per Tide Sta. 872-5744.

PERMIT USE ONLY, NOT FOR CONSTRUCTION

April 02, 2018 5:55:51 p.m.
Drawing: PNTAGRDA1MASTER4-2-18.DWG



1938 Hill Avenue, Fort Myers, Florida 33901
Office: 239-334-6870 Fax: 239-334-7810
MARINE and ENVIRONMENTAL CONSULTANTS

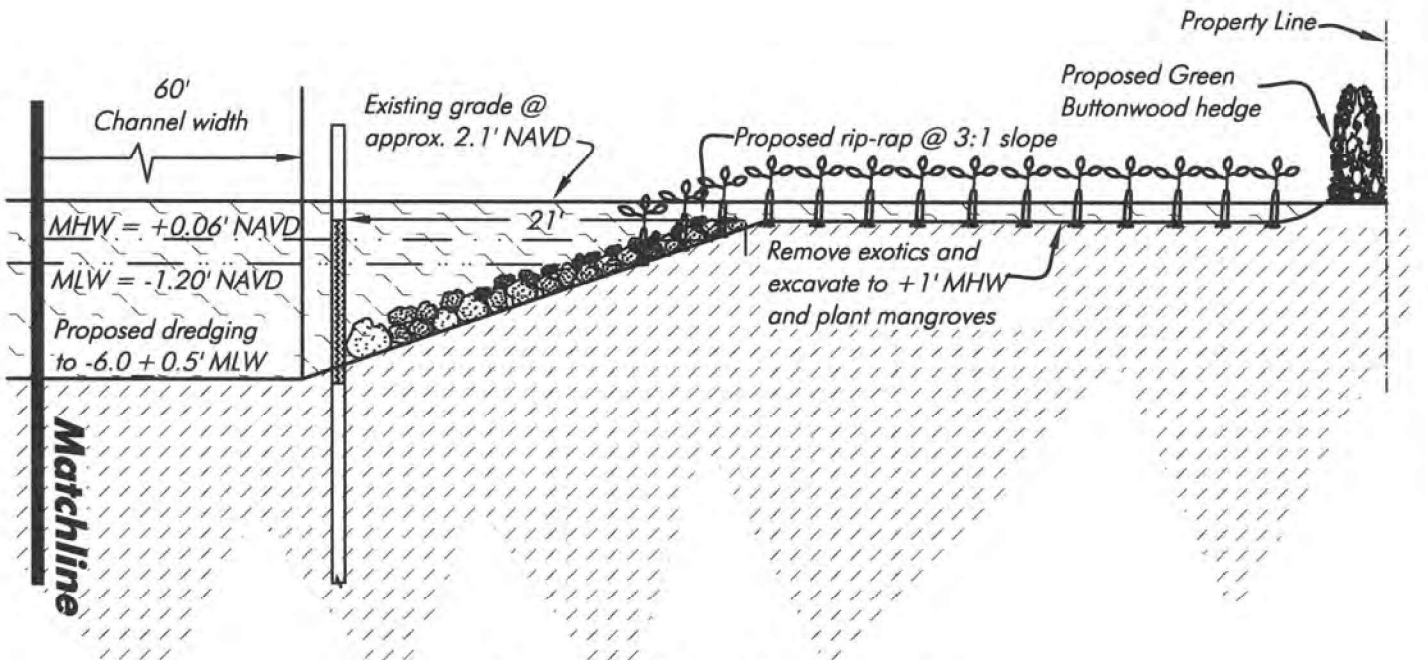
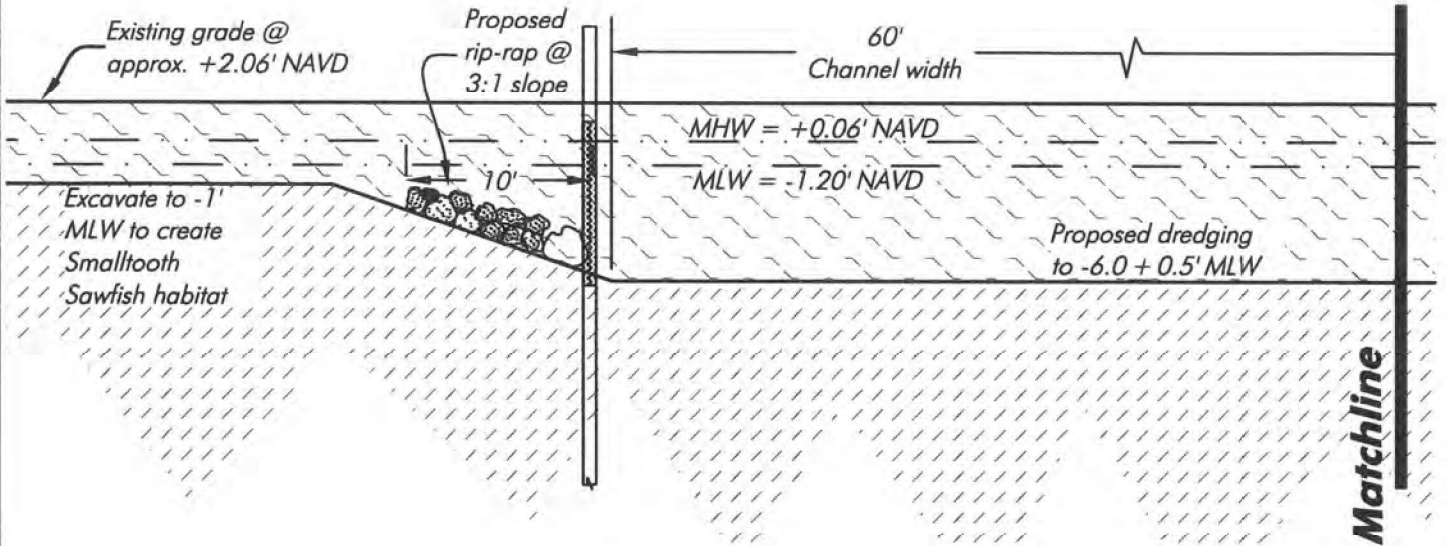
4-2-18

jon

**City of
Punta Gorda**

SHEET

SECTION: 25
TOWNSHIP: 41 S
RANGE: 22 E



Cross-Section B-B

SCALE: 1" = 10'

SAJ-2016-02715
RCVD ELECTRONICALLY
03-APR-2018
Tampa Regulatory Office

SAJ-2016-02715
Additional Channel Access
to Charlotte Harbor
5-16-17 Page 14 of 19

April 02, 2018 5:55:51 p.m.
Drawing: PNTAGRD1MASTER4-2-18.DWG

PERMIT USE ONLY, NOT FOR CONSTRUCTION



1938 Hill Avenue, Fort Myers, Florida 33901
Office: 239-334-6870 Fax: 239-334-7810
MARINE and ENVIRONMENTAL CONSULTANTS

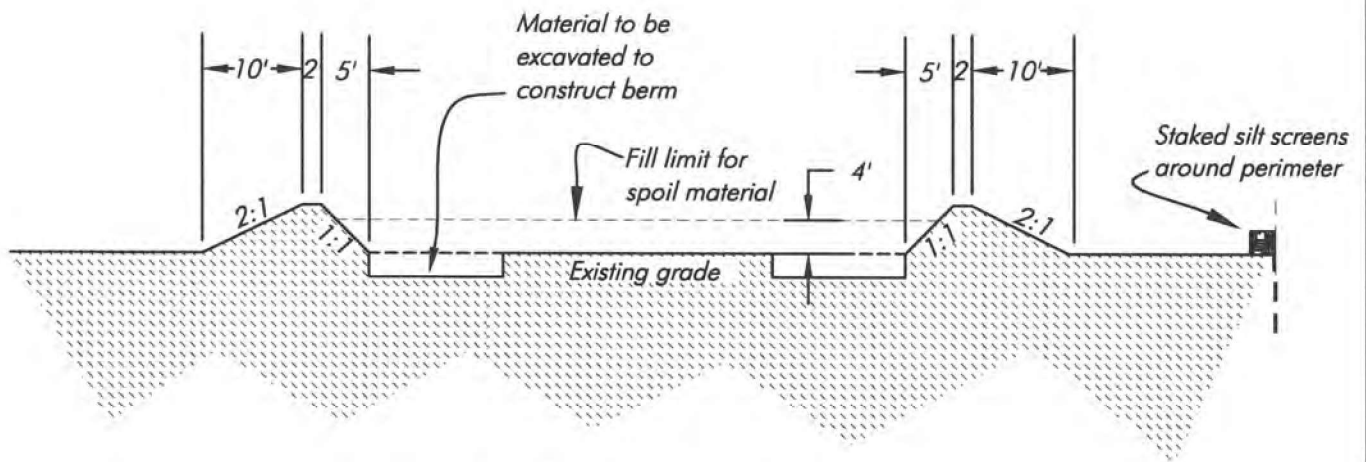
4-2-18

jon

**City of
Punta Gorda**

SHEET

SECTION: 25
TOWNSHIP: 41 S
RANGE: 22 E



Section C-C

SCALE: 1" = 20'

Note: This is a representative creation of a dredged material handling site. There are numerous sites available to the City within Punta Gorda Isles. If the McQueen parcel on Sea Edge is in conflict with Sea Edge residents the City will notify the Corps of Engineers of an alternative site to be used prior to construction.

SAJ-2016-02715
RCVD ELECTRONICALLY
03-APR-2018
Tampa Regulatory Office

SAJ-2016-02715
Additional Channel Access
to Charlotte Harbor
5-16-17 Page 15 of 19

April 02, 2018 5:55:51 p.m.
Drawing: PNTAGRDA1MASTER4-2-18.DWG

PERMIT USE ONLY, NOT FOR CONSTRUCTION



1938 Hill Avenue, Fort Myers, Florida 33901
Office: 239-334-6870 Fax: 239-334-7810
MARINE and ENVIRONMENTAL CONSULTANTS

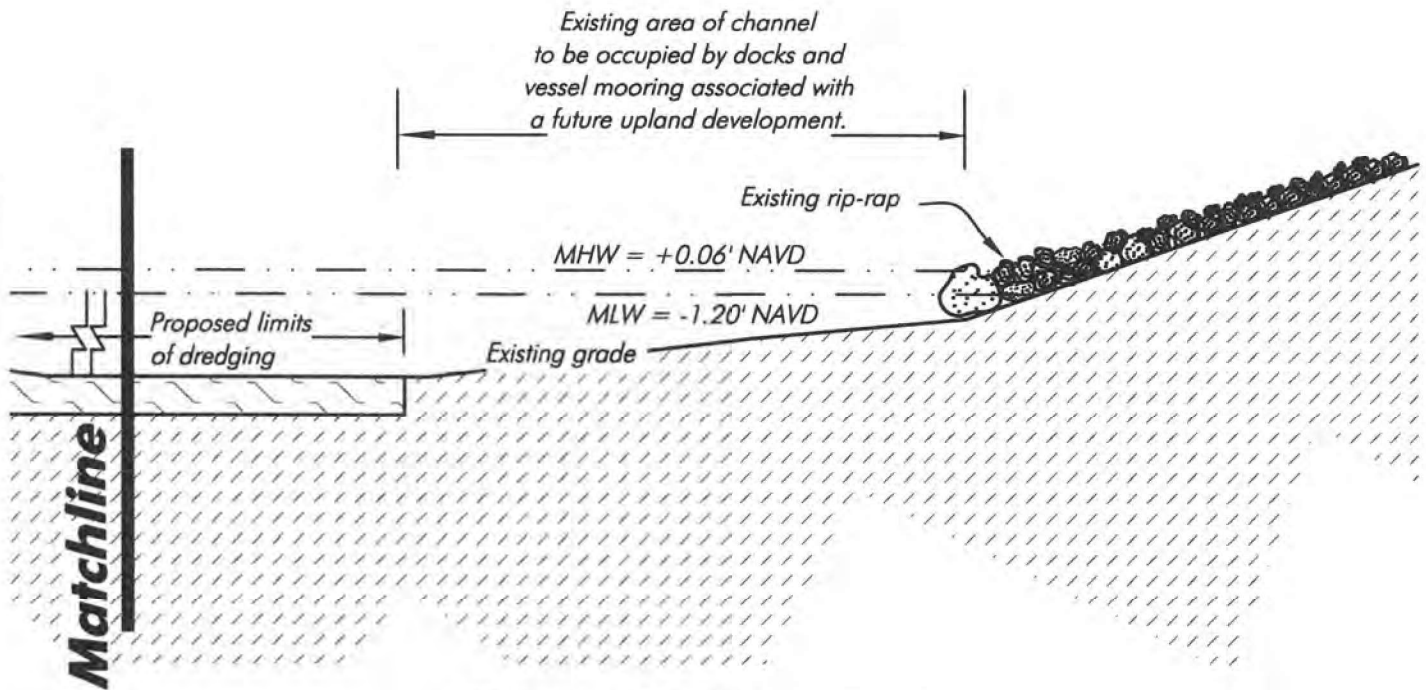
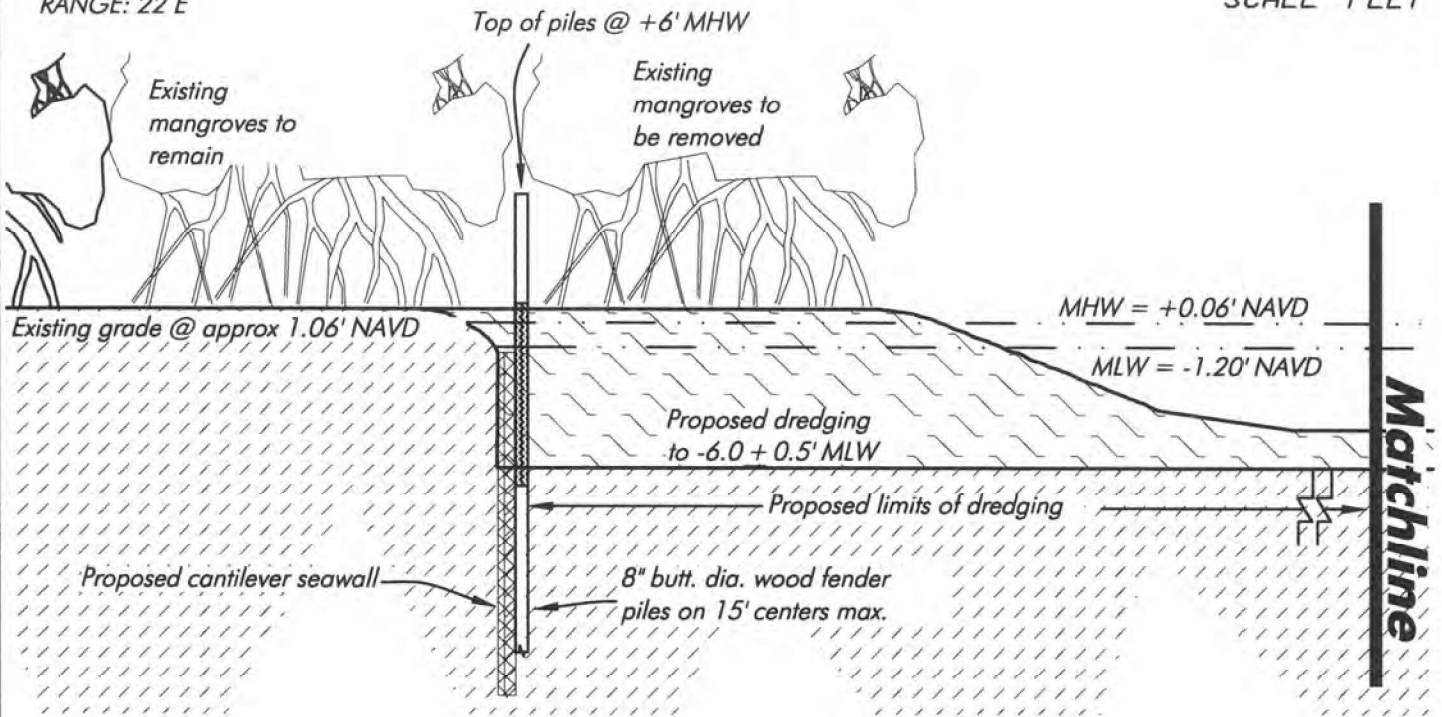
4-2-18

hjmw

**City of
Punta Gorda**

SHEET

SECTION: 25
TOWNSHIP: 41 S
RANGE: 22 E



Cross-Section D-D

SCALE: 1" = 10'

SAJ-2016-02715
RCVD ELECTRONICALLY
03-APR-2018
Tampa Regulatory Office

SAJ-2016-02715
Additional Channel Access
to Charlotte Harbor
5-16-17 Page 16 of 19

April 02, 2018 5:55:51 p.m.
Drawing: PNTAGRA1MASTER4-2-18.DWG

PERMIT USE ONLY, NOT FOR CONSTRUCTION



1938 Hill Avenue, Fort Myers, Florida 33901
Office: 239-334-6870 Fax: 239-334-7810
MARINE and ENVIRONMENTAL CONSULTANTS

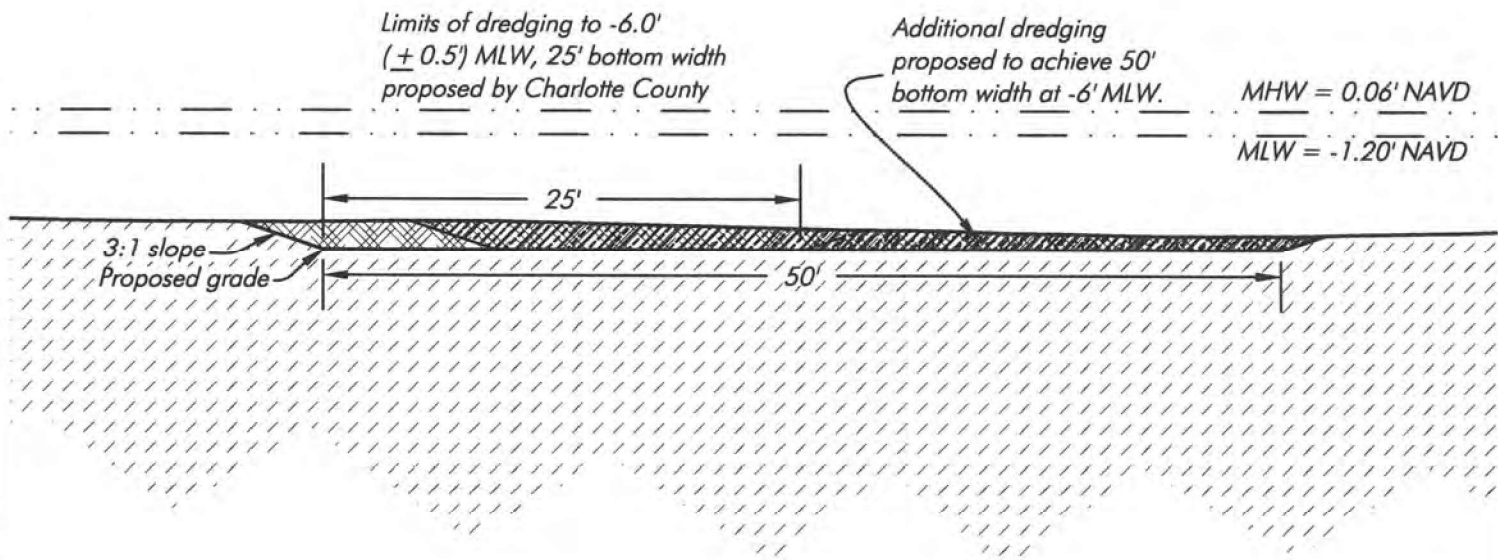
4-2-18

jon

**City of
Punta Gorda**

SHEET

SECTION: 25
TOWNSHIP: 41 S
RANGE: 22 E



Cross-Section E-E

SCALE: 1" = 10'

SAJ-2016-02715
RCVD ELECTRONICALLY
03-APR-2018
Tampa Regulatory Office

SAJ-2016-02715
Additional Channel Access
to Charlotte Harbor
5-16-17 Page 17 of 19

PERMIT USE ONLY, NOT FOR CONSTRUCTION

April 02, 2018 5:55:51 p.m.
Drawing: PNTAGRDA1MASTER4-2-18.DWG



1938 Hill Avenue, Fort Myers, Florida 33901
Office: 239-334-6870 Fax: 239-334-7810
MARINE and ENVIRONMENTAL CONSULTANTS

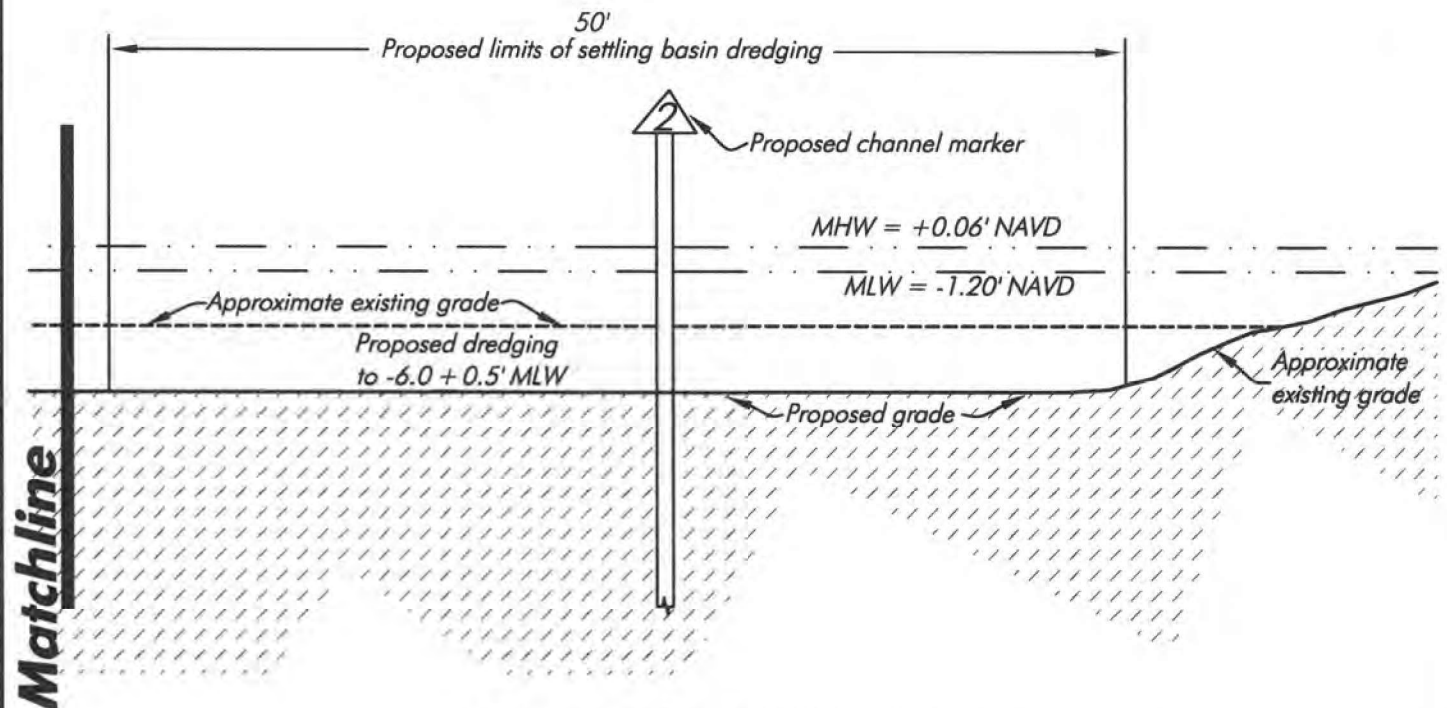
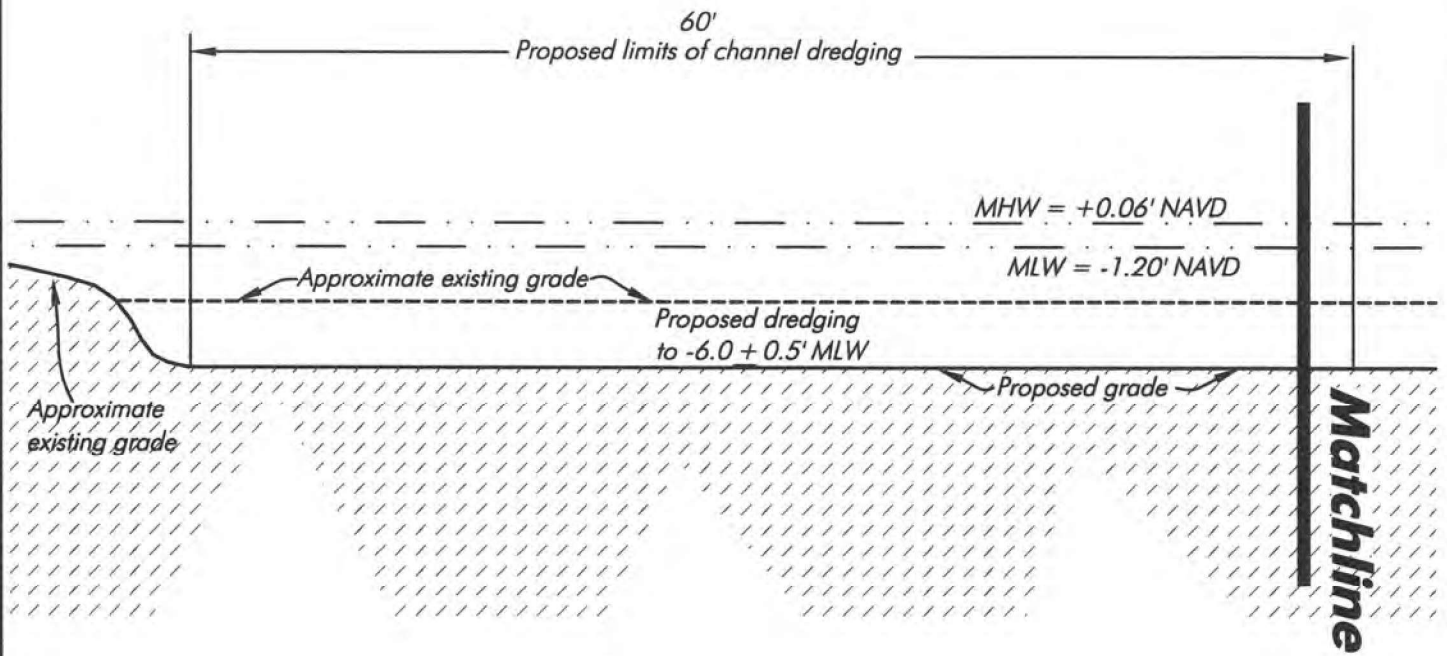
4-2-18

jon

City of
Punta Gorda

SHEET

SECTION: 25
TOWNSHIP: 41 S
RANGE: 22 E



Cross-Section F-F

SCALE: 1" = 10'

SAJ-2016-02715
RCVD ELECTRONICALLY
03-APR-2018
Tampa Regulatory Office

SAJ-2016-02715
Additional Channel Access
to Charlotte Harbor
5-16-17 Page 18 of 19

April 02, 2018 5:55:51 p.m.
Drawing: PNTAGRA1MASTER4-2-18.DWG

PERMIT USE ONLY, NOT FOR CONSTRUCTION

HWA
Hans Wilson & Associates
1938 Hill Avenue, Fort Myers, Florida 33901
Office: 239-334-6870 Fax: 239-334-7810
MARINE and ENVIRONMENTAL CONSULTANTS

4-2-18
jon

**City of
Punta Gorda**

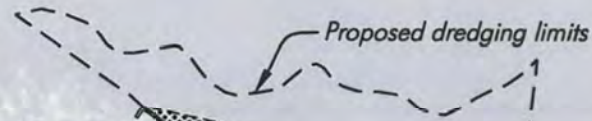
SHEET

SECTION: 25
TOWNSHIP: 41 S
RANGE: 22 E

Charlotte County Aerial 2011



Charlotte Harbor
Preserve State Park



18,570 sf. (0.43 ac.) of mangroves to be removed and mitigated with 0.50 total LPIMB credits.

Place 8" dia. wood piling on 5' centers to restrict access through the 40' opening to the interior restoration basin.

1,270 sf. (0.03 ac.) of upland invasives to be excavated and replaced with mangroves. Note overlap with proposed riprap.

5,450 sf. (0.12 ac.) of invasive exotic uplands to be excavated to create the main channel

5,590 sf. (0.13 ac.) of invasive exotic upland to be excavated and replaced with mangroves

9,430 sf. (0.21 ac.) of mangroves to be removed and included in the 0.50 total LPIMB credits.

State uplands to remain

Excavate 8,661 sf. (0.20 ac.) of invasive exotic uplands to -1' MLW for Smalltooth Sawfish habitat.

SAJ-2016-02715
RCVD ELECTRONICALLY
03-APR-2018
Tampa Regulatory Office

Proposed Restoration - Public Interest

SCALE: 1" = 100'

SAJ-2016-02715
Additional Channel Access
to Charlotte Harbor
5-16-17 Page 19 of 19

Note: Bathymetry references MLW, collected by Hans Wilson & Assoc. Inc. on 7-8-14, per Tide Sta. 872-5744.

April 02, 2018 5:55:51 p.m.
Drawing: PNTAGRDA1MASTER4-2-18.DWG

PERMIT USE ONLY, NOT FOR CONSTRUCTION



1938 Hill Avenue, Fort Myers, Florida 33901
Office: 239-334-6870 Fax: 239-334-7810
MARINE and ENVIRONMENTAL CONSULTANTS

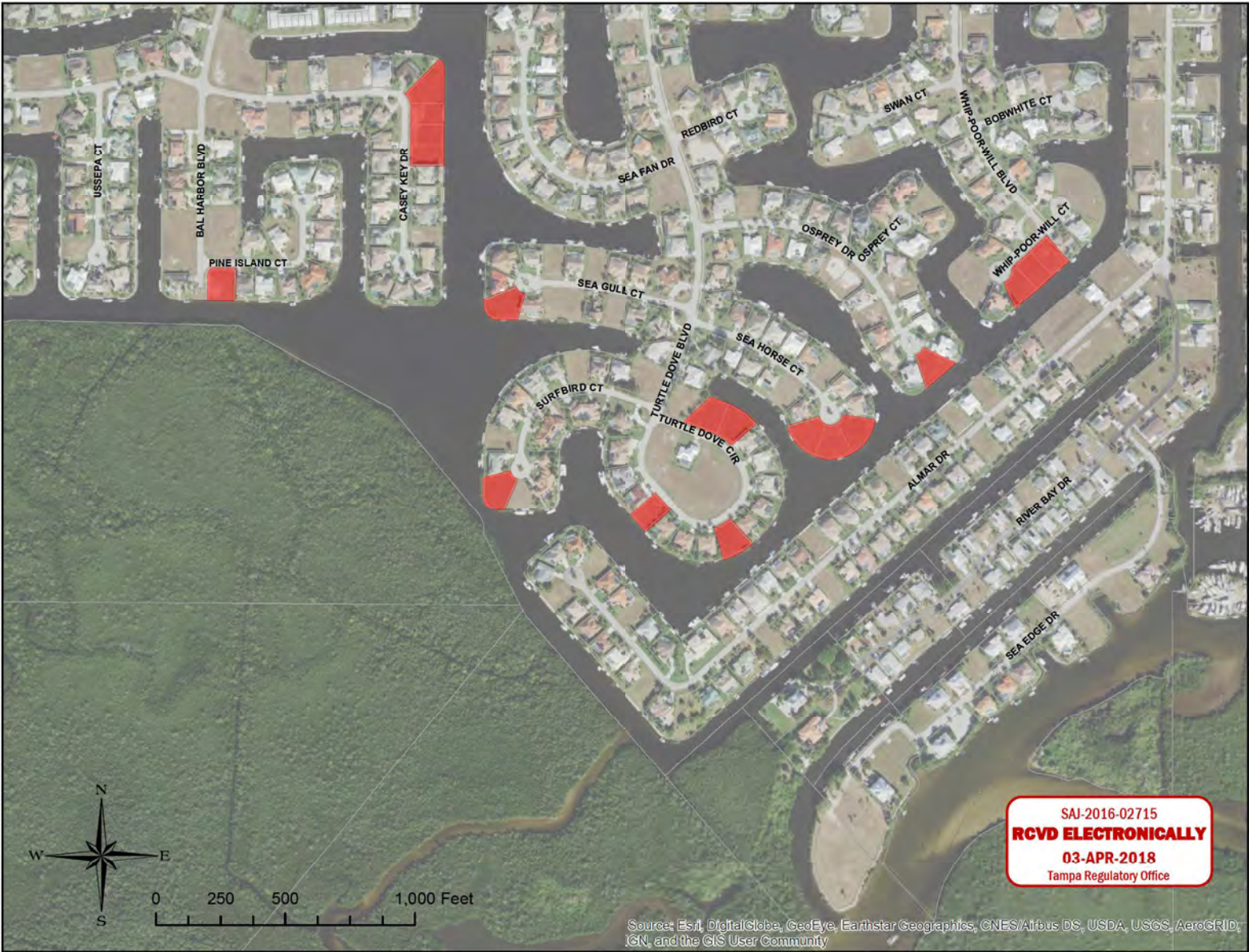
4-2-18

jon

**City of
Punta Gorda**

SHEET

SAJ-2016-02715 City of Punta Gorda Bird Passage Navigation Channel Project
Alternative Dredged Material Off-Load Sites



SAJ-2016-02715 City of Punta Gorda Bird Passage Navigation Channel Project
City of Punta Gorda's Colony Point Dredged Material Management Area



Identify

Select a layer to Identify, then click on map.

-- All Visible Layers --

Identify Results - 4 features found in 2 Layers

Property Ownership : 2 features

Parcel ID : 412215200003
Owners Name : CITY OF PUNTA GORDA
Property Appraiser Info
Full Property Address : Null

Zoom To

Parcel ID : 412215200004
Owners Name : CITY OF PUNTA GORDA
Property Appraiser Info
Full Property Address : Null

Zoom To

Lots : 2 features

Clear Results