

INDEX OF WATER DISTRIBUTION

- W-1) VALVE INSTALLATION
- W-2) BELOW GROUND AUTOMATIC AIR RELEASE VALVE ASSEMBLY
- W-3) TYPICAL WATER SERVICE CONNECTION
- W-4) 3/4" TO 2" ABOVEGROUND METER AND BACKFLOW ASSEMBLY
- W-5) 3/4" TO 2" BACKFLOW PREVENTION ASSEMBLY
- W-6) 3" TO 10" POTABLE WATER METER AND REDUCED PRESSURE BACKFLOW ASSEMBLY
- W-7) 4" OR LARGER REDUCED PRESSURE DETECTOR ASSEMBLY FOR FIRE LINES
- W-8) FIRE HYDRANT ASSEMBLY
- W-9) 3" AND SMALLER BLOW-OFF DETAIL
- W-10) TEMPORARY CONNECTION TO EXISTING MAIN
- W-11) TEMPORARY WATER SERVICE AT HYDRANT
- W-12) MULTIPLE WATER METER SERVICE ASSEMBLY
- W-13) TAPPING SLEEVE AND GATE VALVE ASSEMBLY
- W-14) BOLLARD DETAIL
- W-15) ABOVE GROUND AUTOMATIC AIR RELEASE VALVE ASSEMBLY

CITY OF PUNTA GORDA

UTILITY DEPARTMENT
 326 W. MARION AVE.
 PUNTA GORDA, FL. 33950
 (941) 575-3339 (941) 575-5006 FAX
 E-MAIL utility@ci.punta-gorda.fl.us

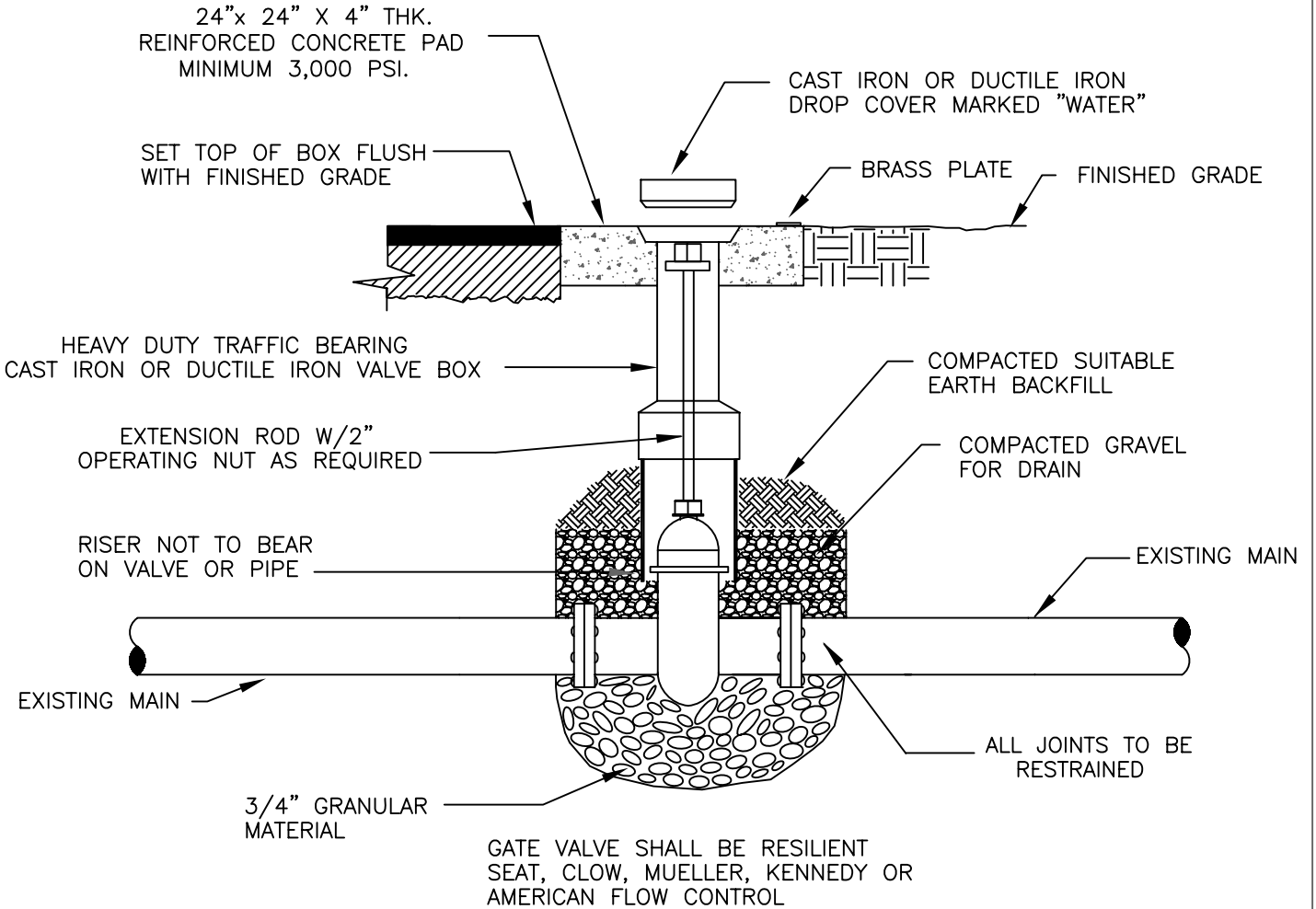
WATER DISTRIBUTION

W-0

INDEX

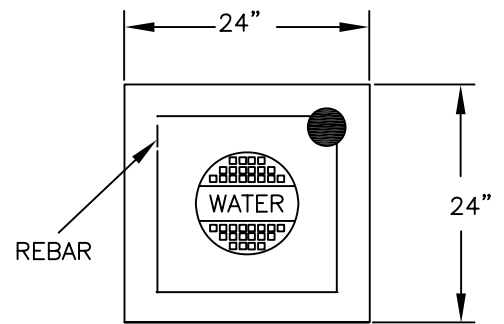
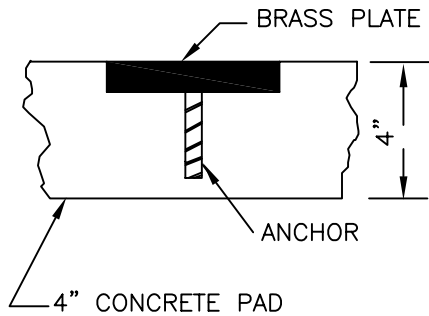
REV BY	DATE
TIM S	01/30/15

VALVE INSTALLATION



SIZE OF VALVE
VALVE TYPE
NO. OF TURNS & DIRECTION TO OPEN.
VALVE M.F.G. & YEAR INST.
SYSTEM "WATER"

BRASS PLATE
INFO



CONCRETE VALVE PAD
PLAN VIEW

CITY OF PUNTA GORDA

UTILITY DEPARTMENT
326 W. MARION AVE.
PUNTA GORDA, FL. 33950
(941) 575-3339 (941) 575-5006 FAX
E-MAIL utility@ci.punta-gorda.fl.us

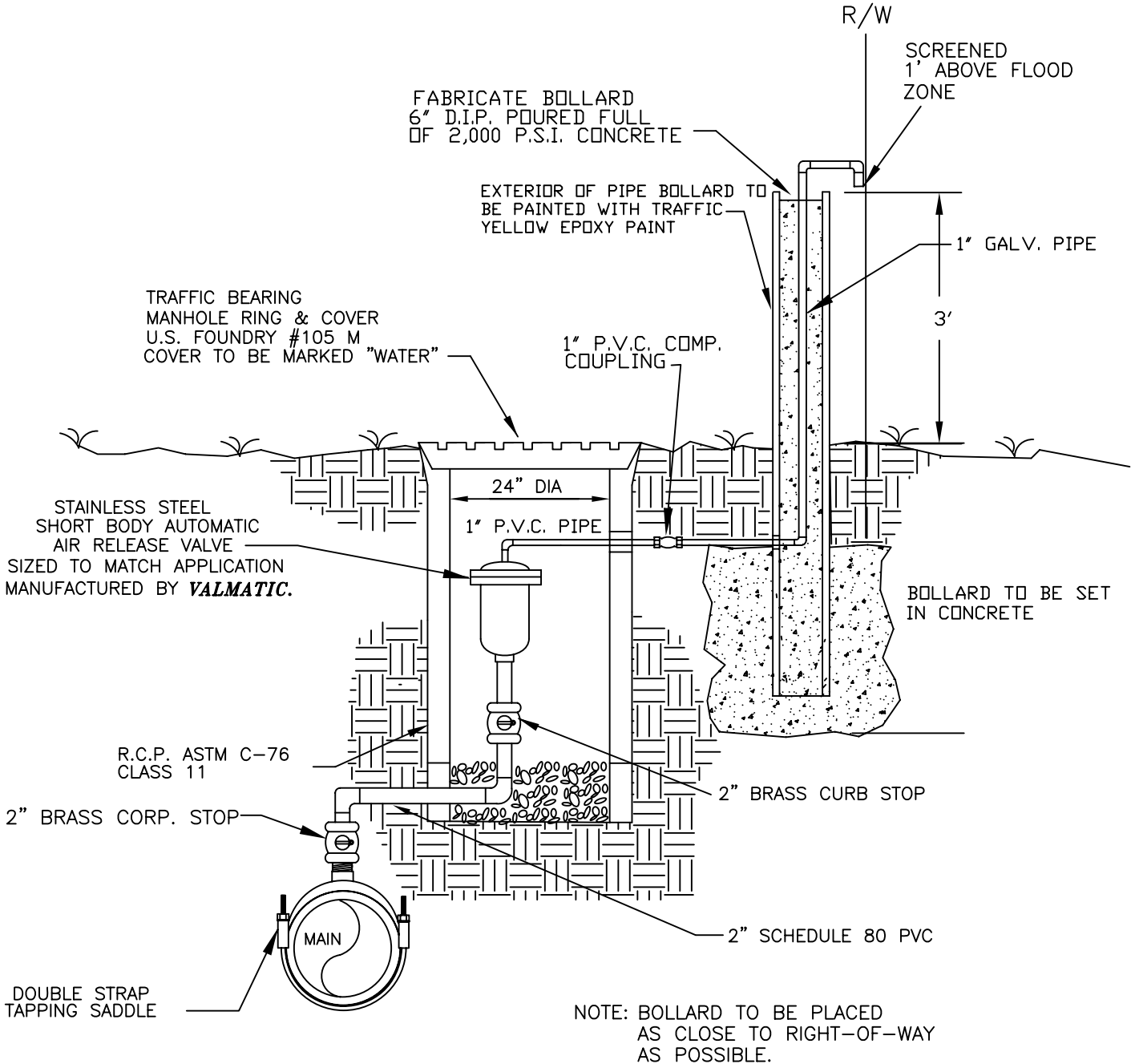
WATER DISTRIBUTION

VALVE INSTALLATION

W-1

REV BY	DATE
TIM S	02/29/08

AUTOMATIC AIR RELEASE VALVE WATER



CITY OF PUNTA GORDA

UTILITY DEPARTMENT
326 W. MARION AVE.
PUNTA GORDA, FL. 33950
(941) 575-3339 (941) 575-5006 FAX
E-MAIL utility@ci.punta-gorda.fl.us

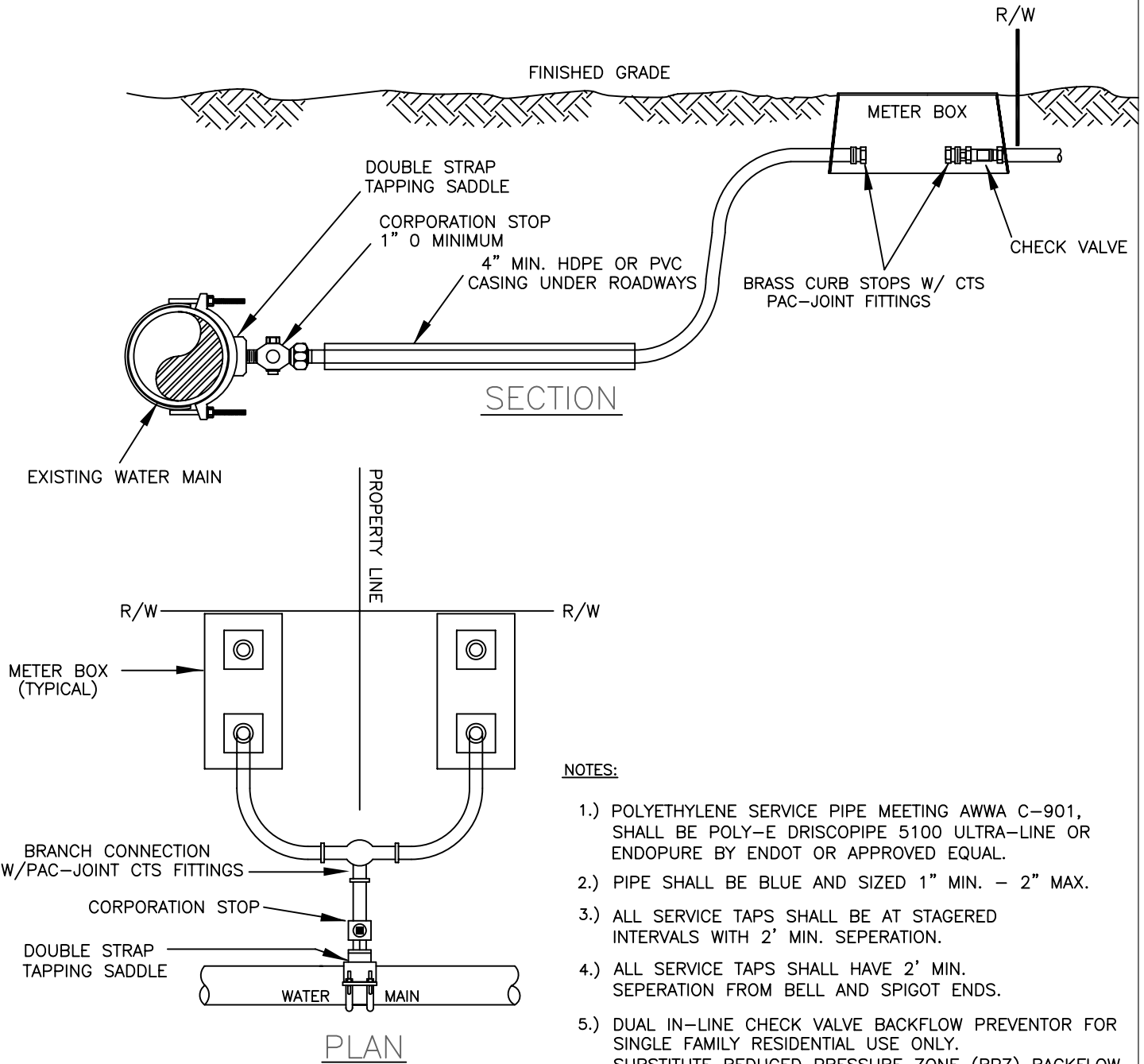
WATER DISTRIBUTION

AUTOMATIC AIR RELEASE
VALVE FOR WATER

W-2

REV BY	DATE
TIM S	02/29/08

WATER METER SHALL BE SET BY THE CITY OF PUNTA GORDA UTILITY DEPT.



NOTES:

- 1.) POLYETHYLENE SERVICE PIPE MEETING AWWA C-901, SHALL BE POLY-E DRISCOPIPE 5100 ULTRA-LINE OR ENDOPURE BY ENDOT OR APPROVED EQUAL.
- 2.) PIPE SHALL BE BLUE AND SIZED 1" MIN. - 2" MAX.
- 3.) ALL SERVICE TAPS SHALL BE AT STAGERED INTERVALS WITH 2' MIN. SEPERATION.
- 4.) ALL SERVICE TAPS SHALL HAVE 2' MIN. SEPERATION FROM BELL AND SPIGOT ENDS.
- 5.) DUAL IN-LINE CHECK VALVE BACKFLOW PREVENTOR FOR SINGLE FAMILY RESIDENTIAL USE ONLY. SUBSTITUTE REDUCED PRESSURE ZONE (RPZ) BACKFLOW DEVICE FOR ALL OTHER USES, SEE DETAIL W-5
- 6.) METER BOXES AND COUPLINGS SHALL BE INSTALLED BY THE INFRASTRUCTURE CONTRACTOR. METER BOXES SHALL NOT BE SET IN DRAINAGE SWALES, EASEMENTS, OR SWALES.

CITY OF PUNTA GORDA

UTILITY DEPARTMENT
 326 W. MARION AVE.
 PUNTA GORDA, FL. 33950
 (941) 575-3339 (941) 575-5006 FAX
 E-MAIL utility@ci.punta-gorda.fl.us

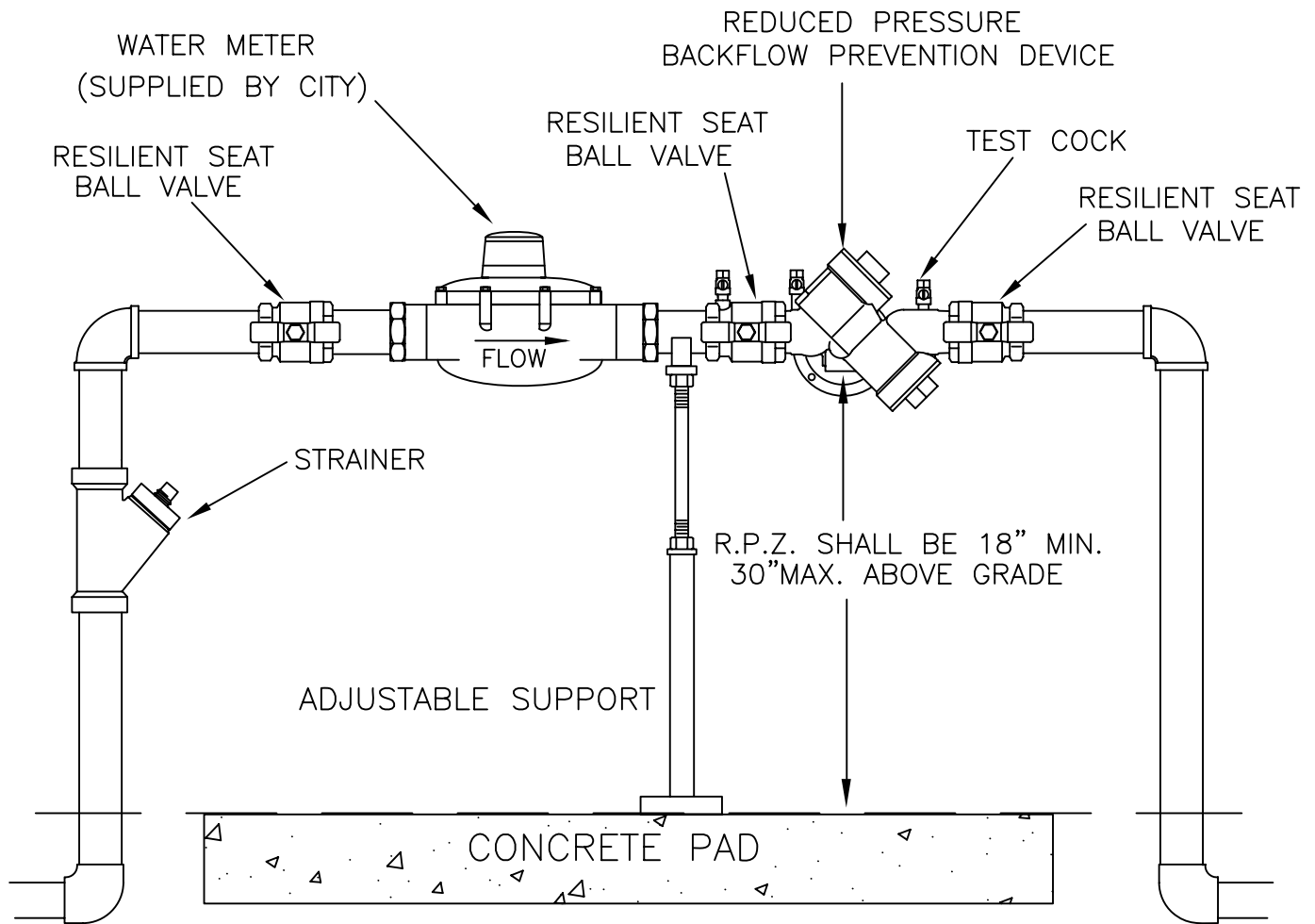
WATER DISTRIBUTION

TYPICAL WATER SERVICE CONNECTION

W-3

REV BY	DATE
TIM S	02/29/08

3/4" THRU 2" ABOVEGROUND METER AND BACKFLOW ASSEMBLY



NOTES;

1. WATER METER SHALL BE ASSEMBLED WITH PROPER METER COUPLINGS.
2. WATER METER (READING U.S. GALLONS) TO BE SUPPLIED BY THE CITY OF PUNTA GORDA, CUSTOMER SERVICE DEPT.
3. REDUCED PRESSURE BACKFLOW DEVICE MUST BE APPROVED BY, THE UNIVERSITY OF CALIFORNIA FOUNDATION FOR CROSS-CONNECTION CONTROL AND HYDRAULIC RESEACH. U.S.C.F.C.C.H.R., AND THE CITY OF PUNTA GORDA.
4. ALL ABOVEGROUND PIPING AND FITTINGS SHALL BE COPPER OR BRASS.
5. BACKFLOW ASSEMBLY MUST BE CERTIFIED BEFORE BEING PLACED INTO SERVICE.

CITY OF PUNTA GORDA

UTILITY DEPARTMENT
 326 W. MARION AVE.
 PUNTA GORDA, FL. 33950
 (941) 575-3339 (941) 575-5006 FAX
 E-MAIL utility@ci.punta-gorda.fl.us

WATER DISTRIBUTION

3/4"-2" METER AND
 BACKFLOW ASSEMBLY

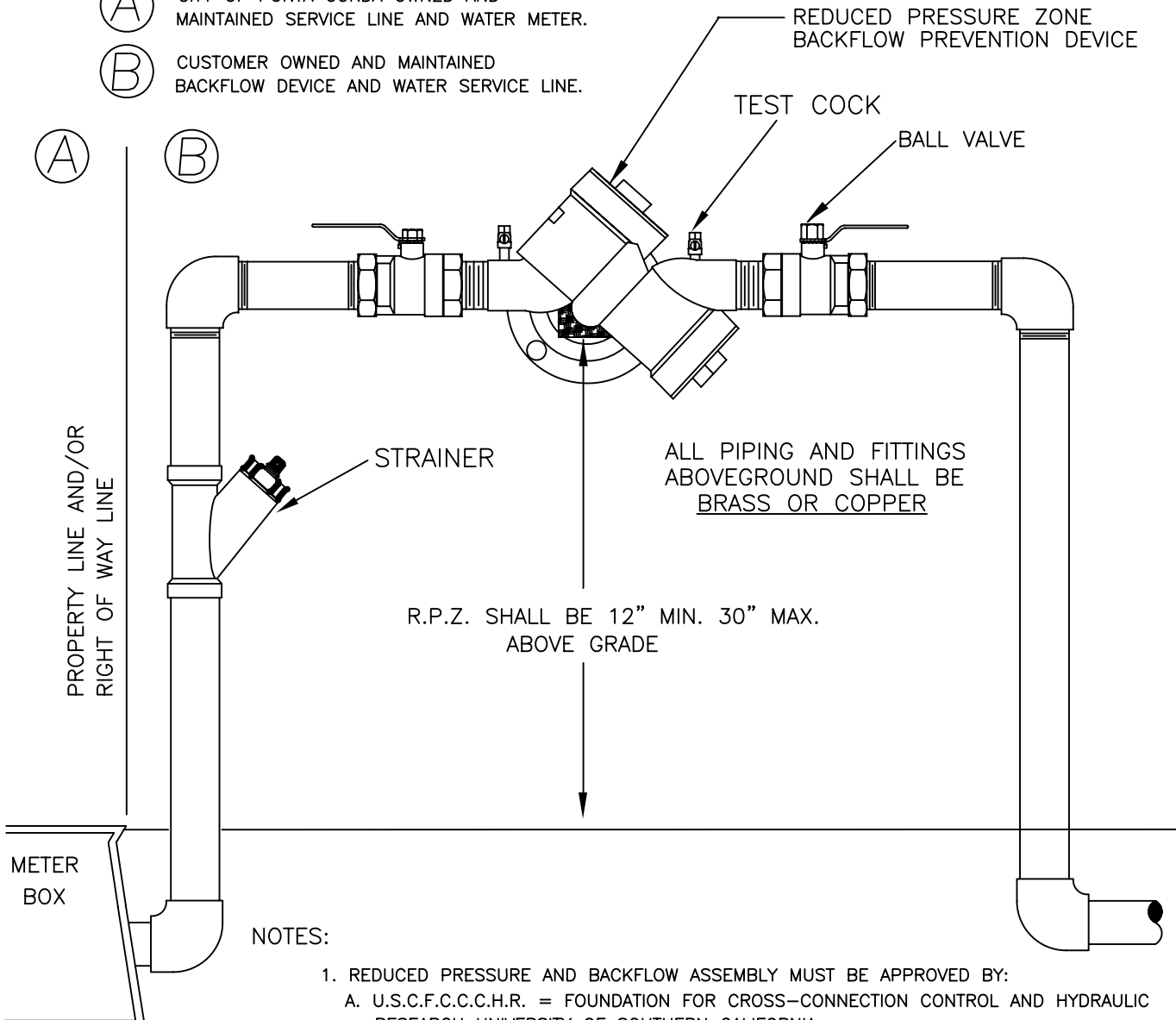
W-4

REV BY	DATE
TIM S	2/25/08

3/4"–2" BACKFLOW ASSEMBLY CUSTOMER OWNED/MAINTAINED

(A) CITY OF PUNTA GORDA OWNED AND MAINTAINED SERVICE LINE AND WATER METER.

(B) CUSTOMER OWNED AND MAINTAINED BACKFLOW DEVICE AND WATER SERVICE LINE.



NOTES:

1. REDUCED PRESSURE AND BACKFLOW ASSEMBLY MUST BE APPROVED BY:
 - A. U.S.C.F.C.C.C.H.R. = FOUNDATION FOR CROSS-CONNECTION CONTROL AND HYDRAULIC RESEARCH UNIVERSITY OF SOUTHERN CALIFORNIA.
 - B. CITY OF PUNTA GORDA.
2. REDUCED PRESSURE AND BACKFLOW ASSEMBLY MUST BE CERTIFIED AND MEET THE MANUFACTURERS SPECIFICATIONS BEFORE BEING PLACED INTO SERVICE.
2. ALL PIPING AND FITTINGS ABOVE GROUND SHALL BE COPPER OR BRASS.

CITY OF PUNTA GORDA

UTILITY DEPARTMENT
326 W. MARION AVE.
PUNTA GORDA, FL. 33950
(941) 575-3339 (941) 575-5006 FAX
E-MAIL utility@ci.punta-gorda.fl.us

WATER DISTRIBUTION

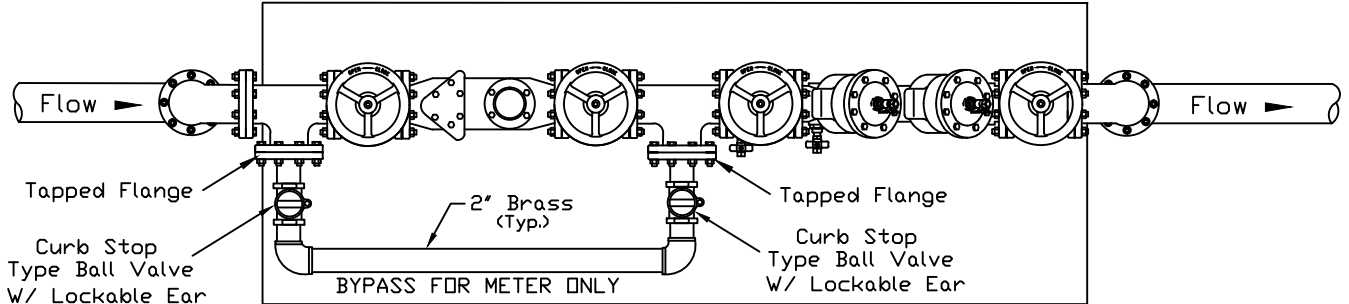
BACKFLOW PREVENTION
ASSEMBLY 3/4" TO 2"

W-5

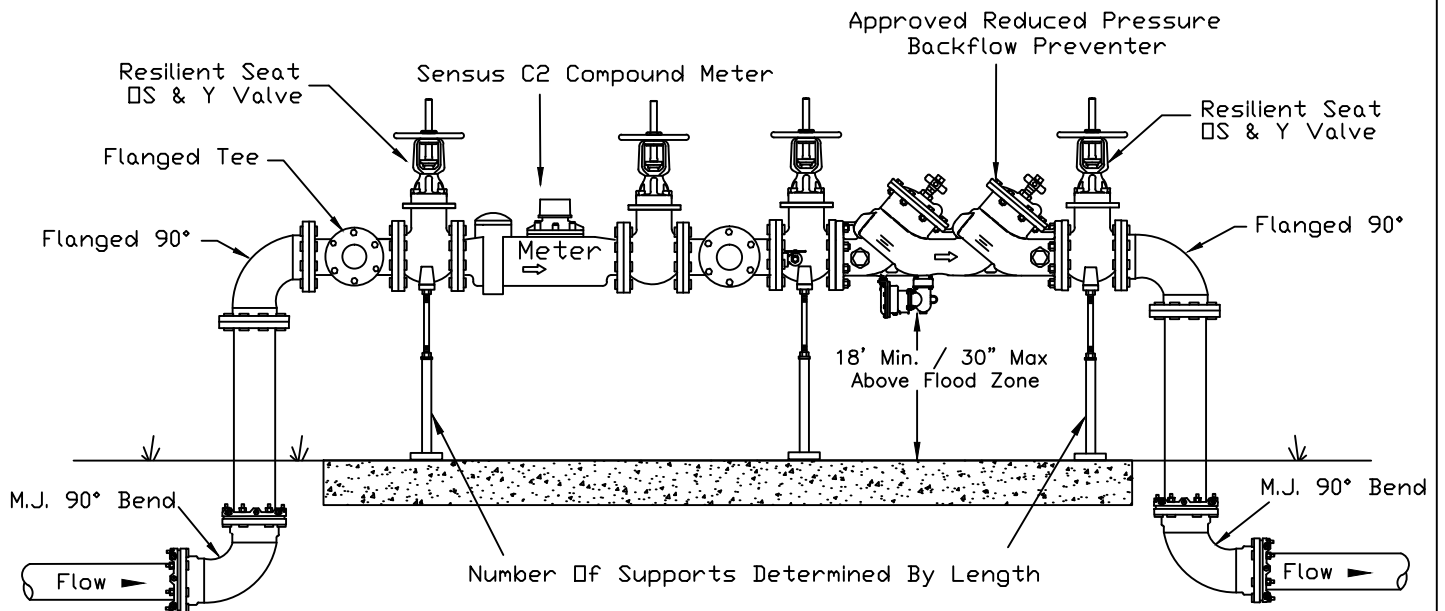
REV BY	DATE
TIM S	02/29/08

3' - 10" MASTER WATER METER AND REDUCED PRESSURE BACKFLOW ASSEMBLY WITH BYPASS

Reinforced Concrete Pad 4" Thick X 48" Wide
Lenght To Be Determined



PLAN VIEW



DETAIL COMPOUND WATER METER SET

NOTES:

1. REDUCED PRESSURE AND BACKFLOW ASSEMBLY MUST BE APPROVED BY:
 - A. U.S.C.F.C.C.C.H.R. = FOUNDATION FOR CROSS-CONNECTION CONTROL AND HYDRAULIC RESEARCH UNIVERSITY OF SOUTHERN CALIFORNIA.
 - B. CITY OF PUNTA GORDA.
2. SENSUS C2 COMPOUND WATER METER
3. BYPASS SHALL BE THREADED BRASS OR COOPER.
4. ASSEMBLY TO BE PAINTED BLUE.

CITY OF PUNTA GORDA

UTILITY DEPARTMENT
326 W. MARION AVE.
PUNTA GORDA, FL. 33950
(941) 575-3339 (941) 575-5006 FAX
E-MAIL utility@ci.punta-gorda.fl.us

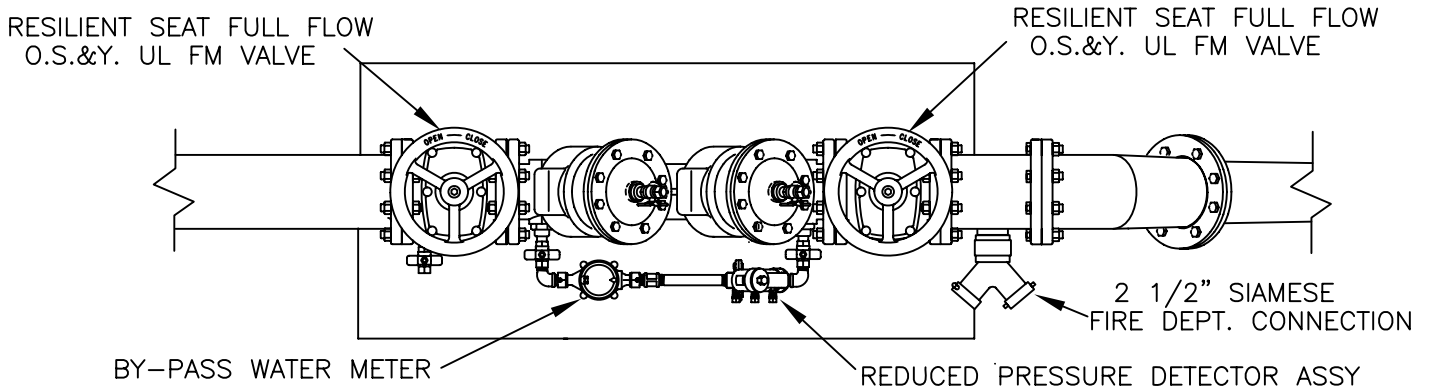
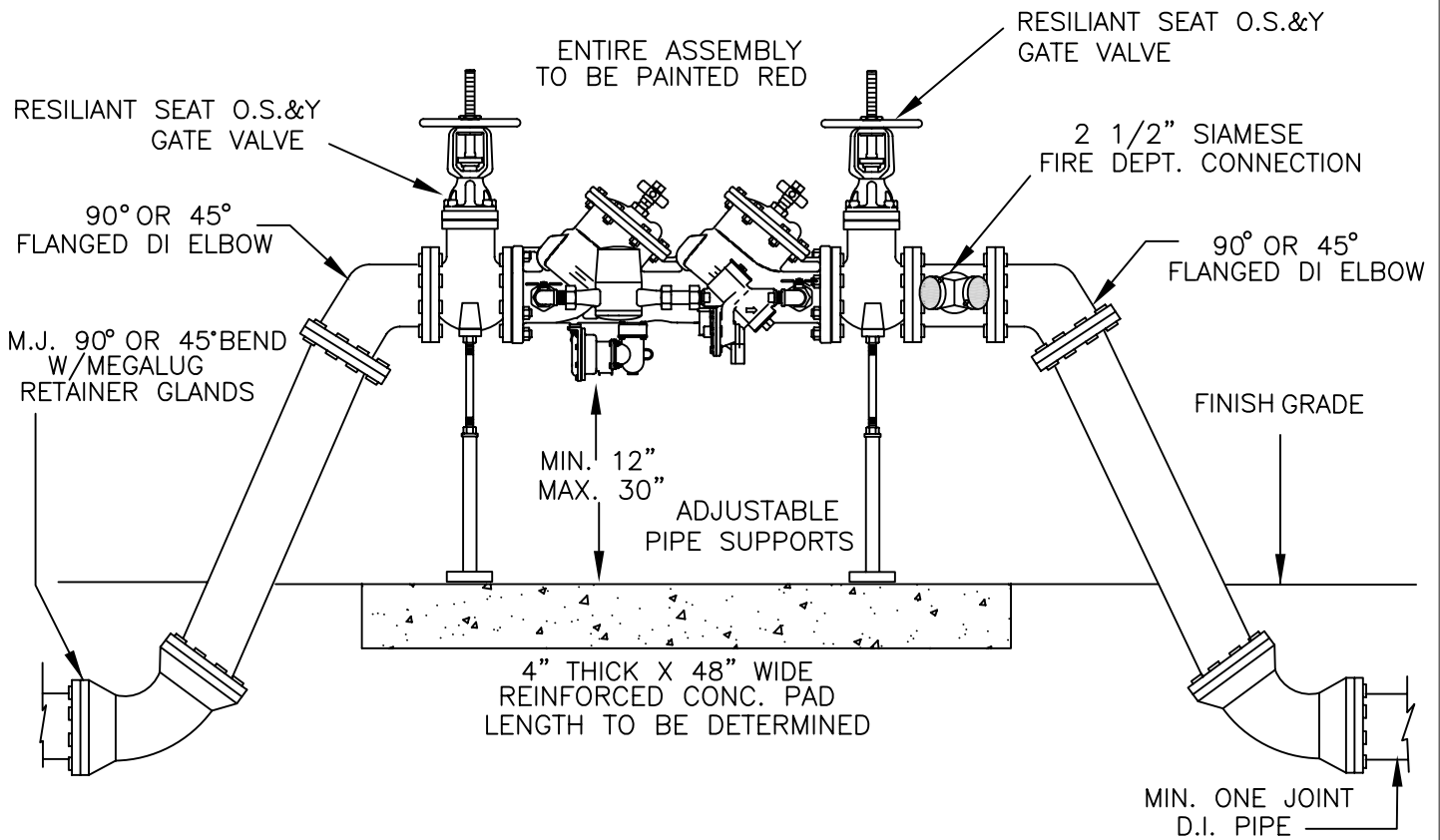
WATER DISTRIBUTION

3"-10" WATER METER AND REDUCED PRESSURE BACKFLOW ASSEMBLY

W-6

REV BY	DATE
TIM S	01/30/15

4" OR LARGER REDUCED PRESSURE DETECTOR ASSY. BACKFLOW PREVENTION DEVICE FOR FIRE LINES ONLY



NOTE:

1. BACKFLOW ASSEMBLY SHALL BE CERTIFIED BEFORE BEING PLACED INTO SERVICE.
2. FIRE LINE IS OWNED AND MAINTAINED BY PROPERTY OWNER FROM MAINLINE TO BUILDING.
3. DEVICE SHALL BE APPROVED BY THE FOUNDATION FOR CROSS-CONNECTION CONTROL AND HYDRAULIC RESEARCH; **U.S.C.F.C.C.H.R. APPROVED ONLY**

CITY OF PUNTA GORDA

UTILITY DEPARTMENT
326 W. MARION AVE.
PUNTA GORDA, FL. 33950
(941) 575-3339 (941) 575-5006 FAX
E-MAIL utility@ci.punta-gorda.fl.us

WATER DISTRIBUTION

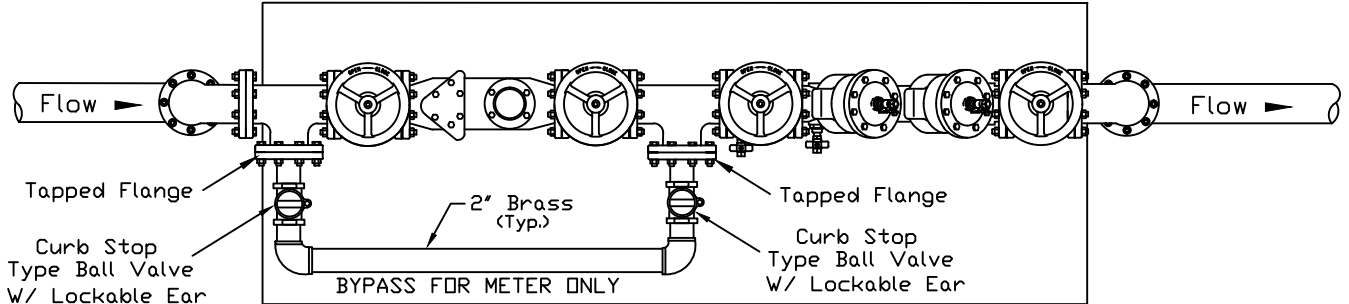
4" OR LARGER REDUCED PRESSURE DETECTOR ASSY. FOR FIRE LINES

W-7

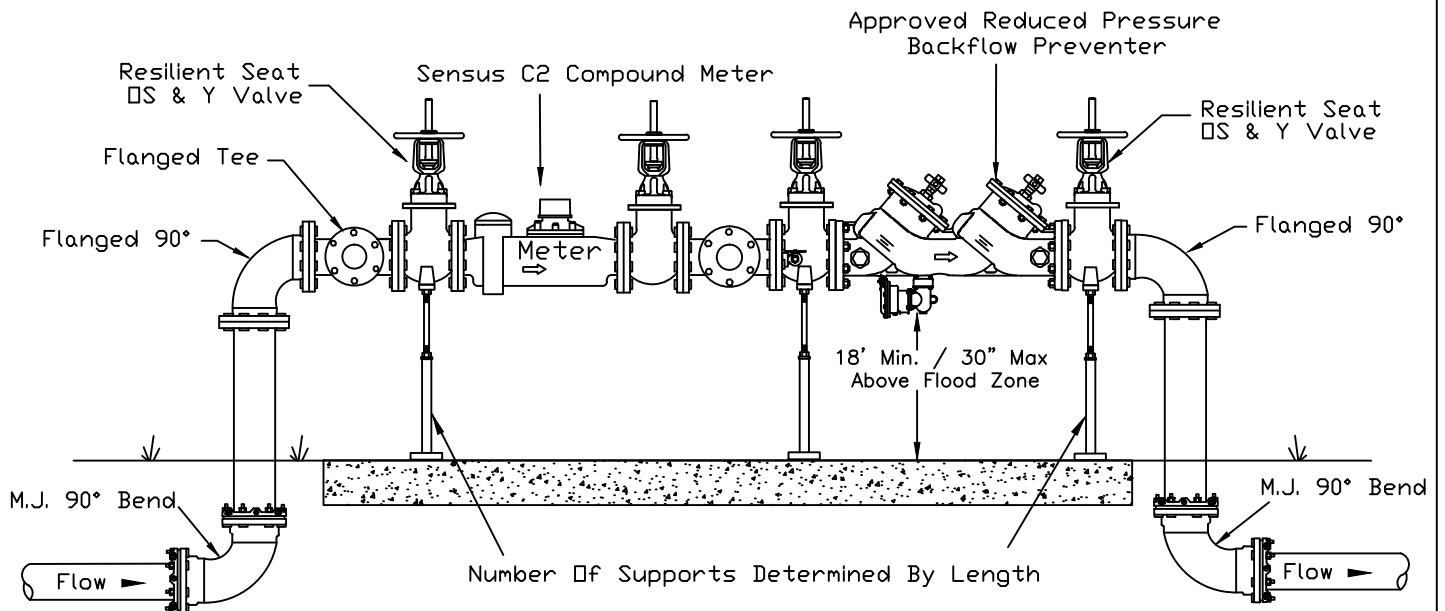
REV BY	DATE
TIM S	03/20/08

3' - 10" MASTER WATER METER AND REDUCED PRESSURE BACKFLOW ASSEMBLY WITH BYPASS

Reinforced Concrete Pad 4" Thick X 48" Wide
Lenght To Be Determined



PLAN VIEW



DETAIL COMPOUND WATER METER SET

NOTES:

1. REDUCED PRESSURE AND BACKFLOW ASSEMBLY MUST BE APPROVED BY:
 - A. U.S.C.F.C.C.C.H.R. = FOUNDATION FOR CROSS-CONNECTION CONTROL AND HYDRAULIC RESEARCH UNIVERSITY OF SOUTHERN CALIFORNIA.
 - B. CITY OF PUNTA GORDA.
2. SENSUS C2 COMPOUND WATER METER
3. BYPASS SHALL BE THREADED BRASS OR COOPER.
4. ASSEMBLY TO BE PAINTED BLUE.

CITY OF PUNTA GORDA

UTILITY DEPARTMENT
326 W. MARION AVE.
PUNTA GORDA, FL. 33950
(941) 575-3339 (941) 575-5006 FAX
E-MAIL utility@ci.punta-gorda.fl.us

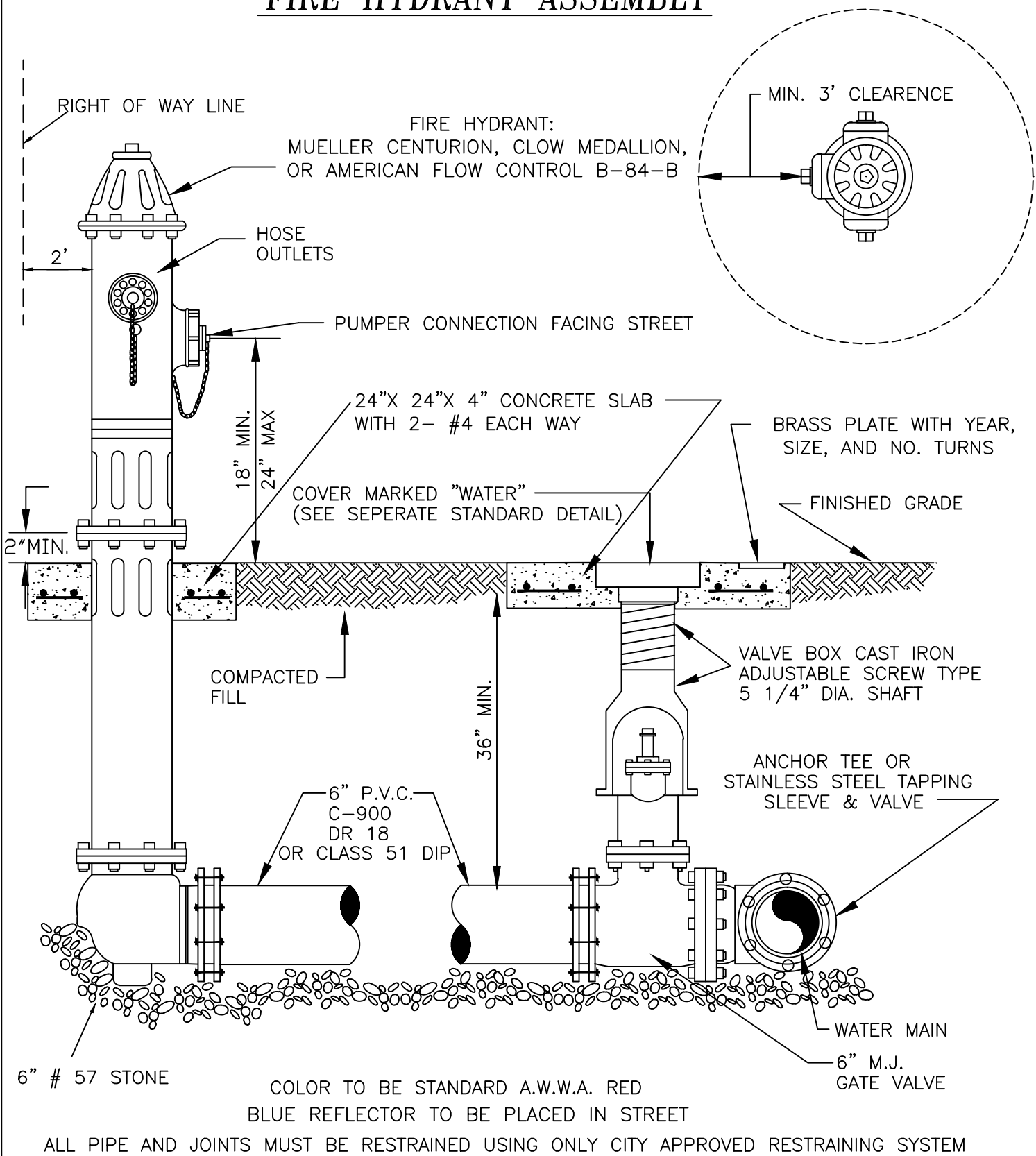
WATER DISTRIBUTION

3"-10" WATER METER AND REDUCED PRESSURE BACKFLOW ASSEMBLY

W-6

REV BY	DATE
TIM S	01/30/15

FIRE HYDRANT ASSEMBLY



CITY OF PUNTA GORDA

UTILITY DEPARTMENT
326 W. MARION AVE.
PUNTA GORDA, FL. 33950
(941) 575-3339 (941) 575-5006 FAX
E-MAIL utility@ci.punta-gorda.fl.us

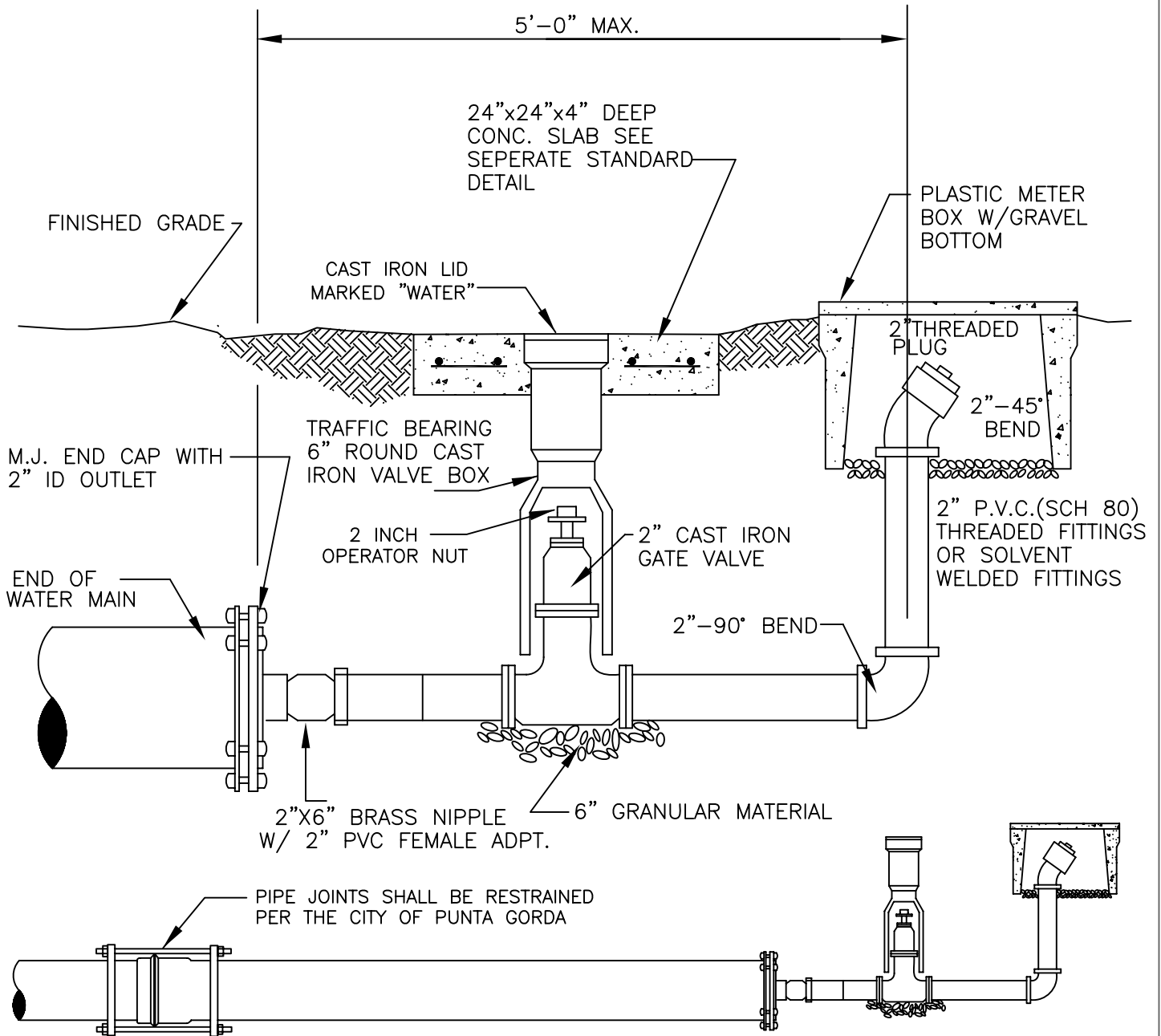
WATER DISTRIBUTION

FIRE HYDRANT ASSY.

W-8

REV BY	DATE
TIM S	5/24/12

BLOW OFF DETAIL



CITY OF PUNTA GORDA

UTILITY DEPARTMENT
 326 W. MARION AVE.
 PUNTA GORDA, FL. 33950
 (941) 575-3339 (941) 575-5006 FAX
 E-MAIL utility@ci.punta-gorda.fl.us

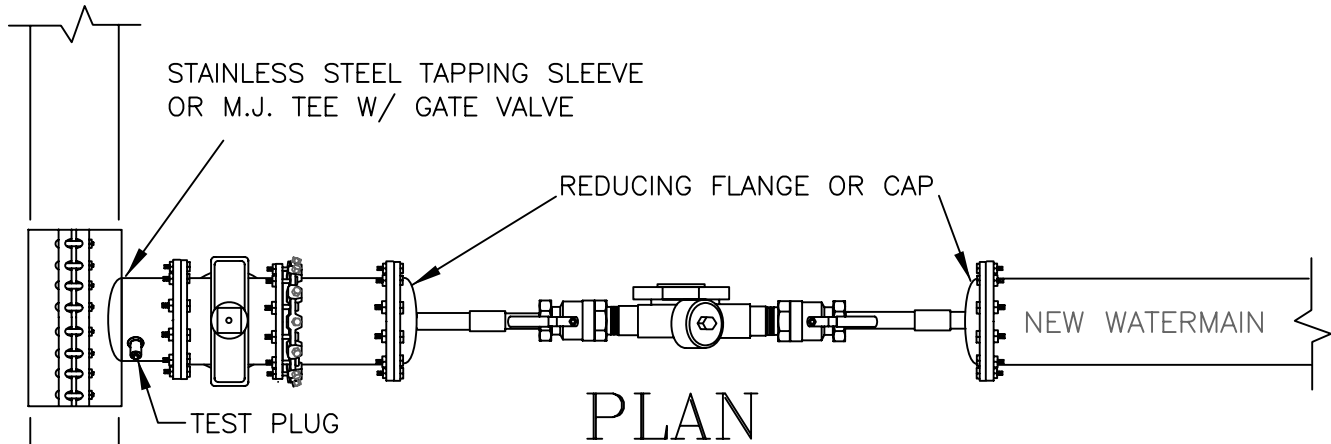
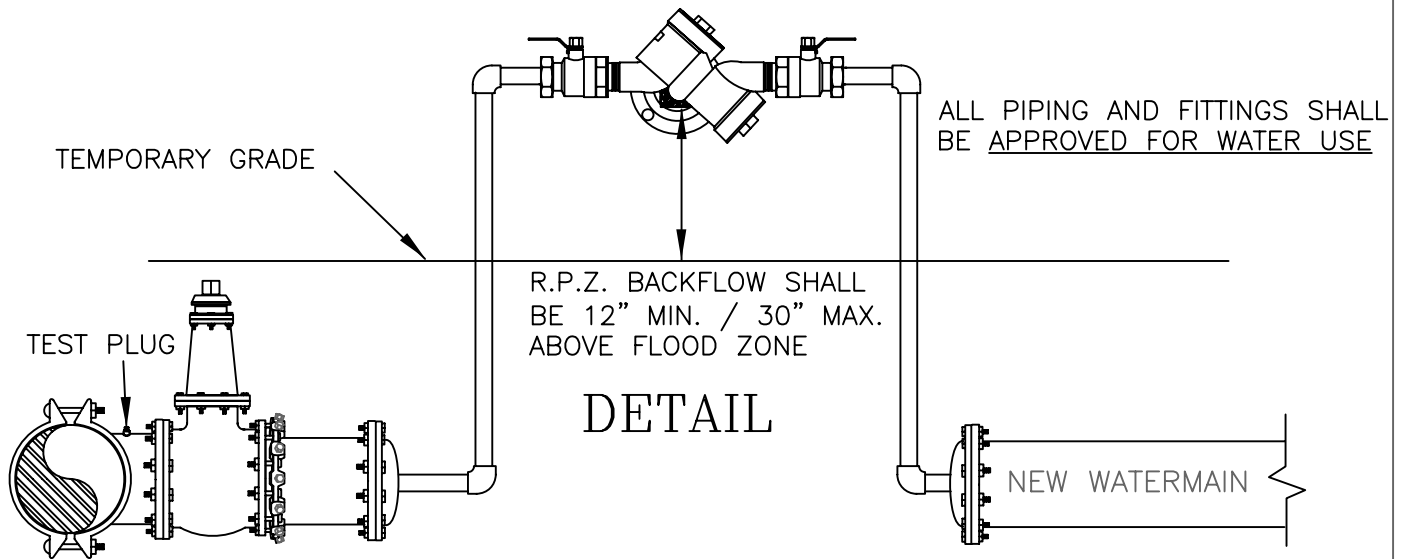
WATER DISTRIBUTION

3 INCH AND SMALLER
 BLOW-OFF DETAIL

W-9

REV BY	DATE

TEMPORARY JUMPER CONNECTION TO EXISTING WATERMAIN



NOTES

1. TOTAL LENGTH SHALL BE DETERMINED IN FIELD.
2. CONTRACTOR TO SUPPORT AND MAKE SAFE FROM TRAFFIC.
3. U.S.C. APPROVED R.P.Z. BACKFLOW ASSEMBLY SHALL BE CERTIFIED BEFORE FIELD USE

CITY OF PUNTA GORDA

UTILITY DEPARTMENT
 326 W. MARION AVE.
 PUNTA GORDA, FL. 33950
 (941) 575-3339 (941) 575-5006 FAX
 E-MAIL utility@ci.punta-gorda.fl.us

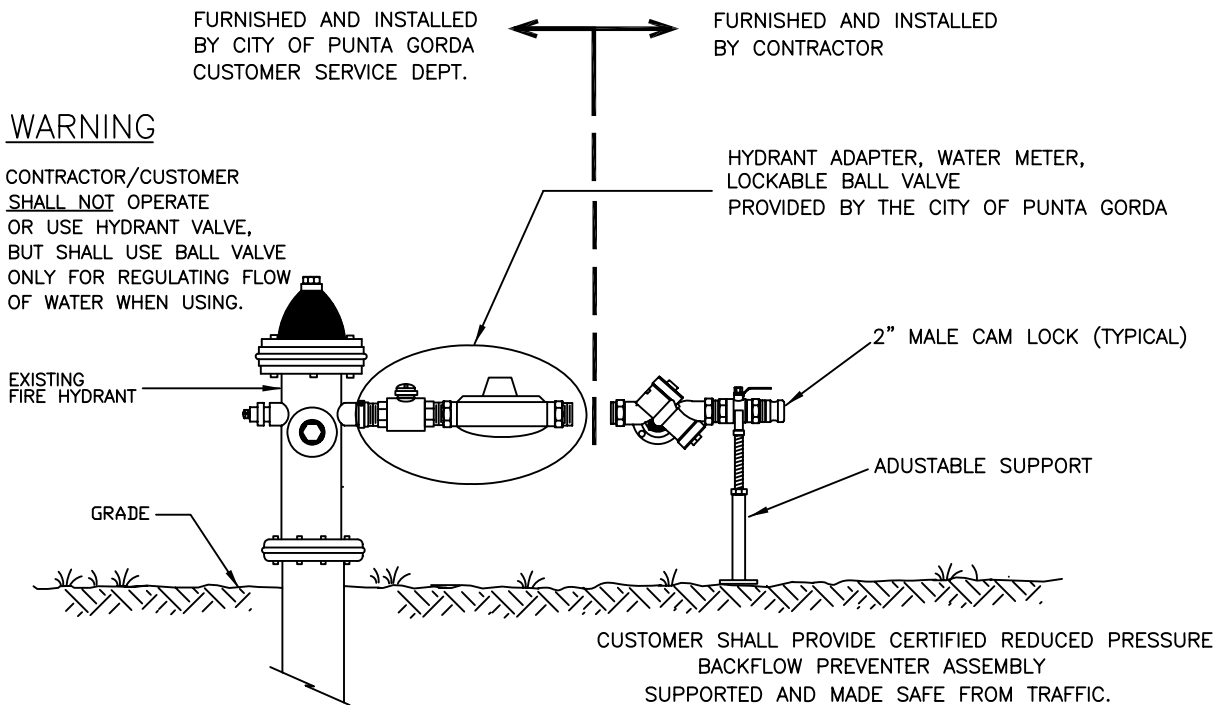
WATER DISTRIBUTION
 TEMPORARY CONNECTION
 TO EXISTING MAIN

W-10

REV BY	DATE
TIM S	03/20/08

CITY OF PUNTA GORDA
TYPICAL INSTALLATION DETAIL FOR FIRE HYDRANT
 WITH NO LARGER THAN 2 INCH TEMPORARY WATER SERVICE

1. CONTRACTOR/CUSTOMER SHALL APPLY AT CITY OF PUNTA GORDA WATER DEPT. FOR TEMPORARY WATER SERVICE THREE DAYS PRIOR TO REQUIRED SERVICE DATE.
2. METER, LOCKABLE STAINLESS STEEL BALL VALVE AND PIPE SUPPORT WILL BE FURNISHED AND INSTALLED BY CITY OF PUNTA GORDA WATER DEPT. %.
3. ALL FITTINGS, PIPING, VALVES AND MATERIALS INCLUDING THE APPROVED REDUCED PRESSURE BACKFLOW PREVENTION DEVICE SHALL BE FURNISHED, INSTALLED AND TESTED BY CITY OF PUNTA GORDA WATER DEPT.
4. CONTRACTOR/CUSTOMER SHALL PROVIDE PROTECTION FOR ASSEMBLY FROM DAMAGE.
6. THE CONTRACTOR/CUSTOMER SHALL PROVIDE A LOCK FOR USE WITH BALL VALVE AND SHALL USE ONLY THE BALL VALVE, NOT THE HYDRANT VALVE, FOR CONTROLLING WATER USED FROM THE FIRE HYDRANT.
7. BY APPLYING FOR SERVICE, CONTRACTOR/CUSTOMER AGREES TO TAKE WATER SERVICE FROM CITY OF PUNTA GORDA WATER DEPT. IN ACCORDANCE WITH THE APPROPRIATE RATE SCHEDULE AND IN ACCORDANCE WITH CITY RULES AND REGULATIONS, OR ANY SUPERSEDING RATE SCHEDULE AND/OR RULES AND REGULATIONS.



CITY OF PUNTA GORDA

UTILITY DEPARTMENT
 326 W. MARION AVE.
 PUNTA GORDA, FL. 33950
 (941) 575-3339 (941) 575-5006 FAX
 E-MAIL utility@ci.punta-gorda.fl.us

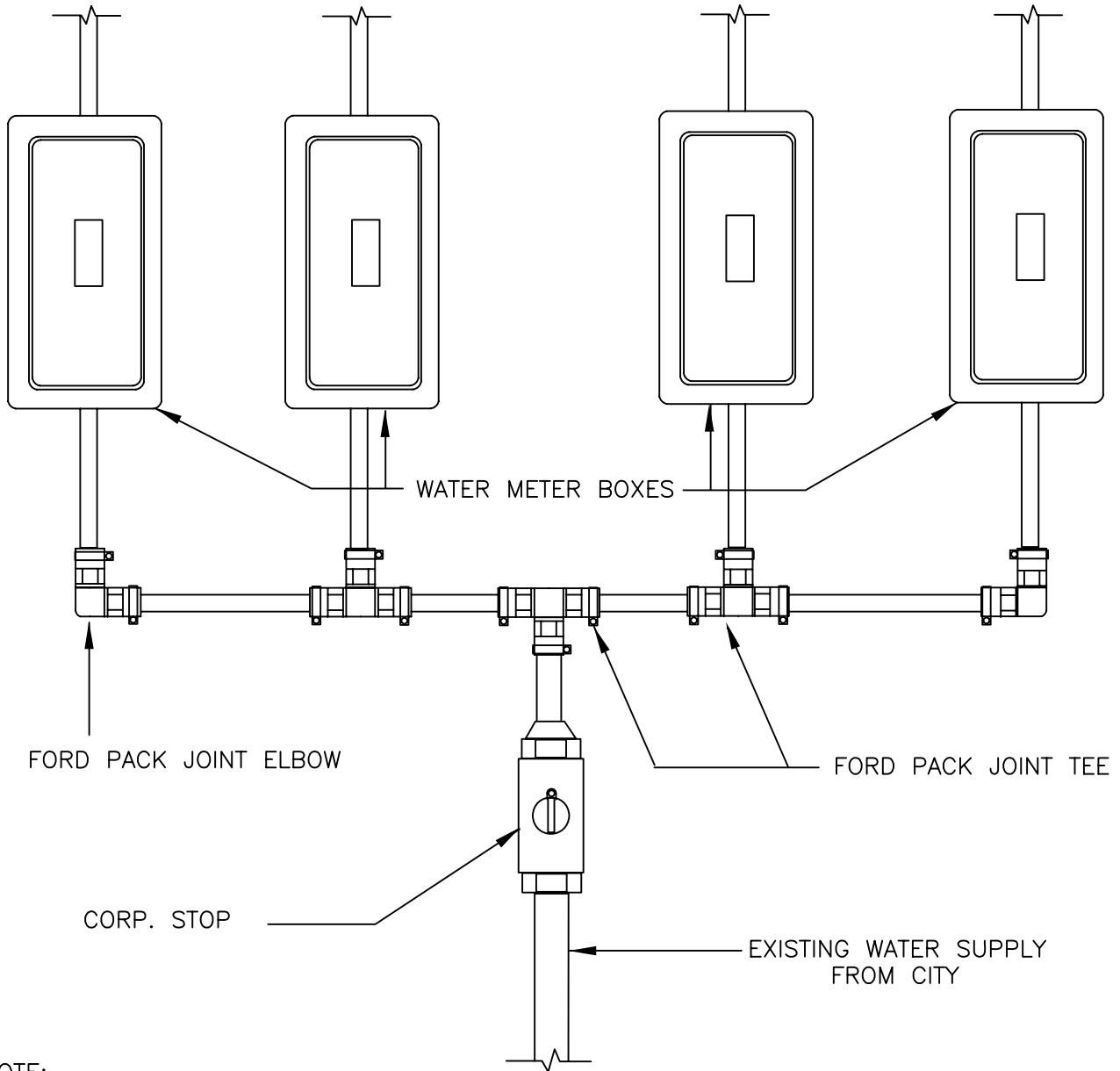
WATER DISTRIBUTION

TEMPORARY WATER
 SUPPLY

W-11

REV BY	DATE
TIM S	03/20/08

MULTIPLE METER DISTRIBUTION SYSTEMS



NOTE:

1. MAXIMUM NUMBER OF SERVICE BRANCHES SHALL BE DETERMINED BY SIZE OF WATER SERVICE PROVIDED BY THE CITY.
2. ALL POLYBUTYLENE TUBING AND FITTINGS SHALL MEET AWWA C-902 STD.

CITY OF PUNTA GORDA

UTILITY DEPARTMENT
 326 W. MARION AVE.
 PUNTA GORDA, FL. 33950
 (941) 575-3339 (941) 575-5006 FAX
 E-MAIL utility@ci.punta-gorda.fl.us

WATER DISTRIBUTION

MULTIPLE METERS

W-12

REV BY	DATE
TIM S	03/20/08

BRASS VALVE ID DISK
(DATE, SIZE, AND NO. OF TURNS)

24" X 24" X 4" REINFORCED CONCRETE PAD

FINISH GRADE

VALVE BOX
HEAVY DUTY TRAFFIC
BEARING CAST IRON

EXTENSION STEM
W/ 2" SQ. NUT
LENGTH AS REQUIRED

(VARIES)
36" MIN.

GATE VALVE SHALL BE
RESILIENT SEAT, CLOW,
MUELLER, KENNEDY OR AFC

STAINLESS STEEL
SPLIT SLEEVE OR
APPROVED EQUAL WITH
FULL CIRCUMFERENCE
GASKET JCM 432
OR APPROVED EQUAL

BED IN STONE

RESILIENT SEAT
GATE VALVE

TEST PLUG

NOTE.

CONTRACTOR SHALL PRESSURE TEST VALVE AND SLEEVE ASSEMBLY PRIOR TO WET TAP; 150.0 PSI FOR 30 MINUTES WITH 0.0 PSI LOSS

CITY OF PUNTA GORDA

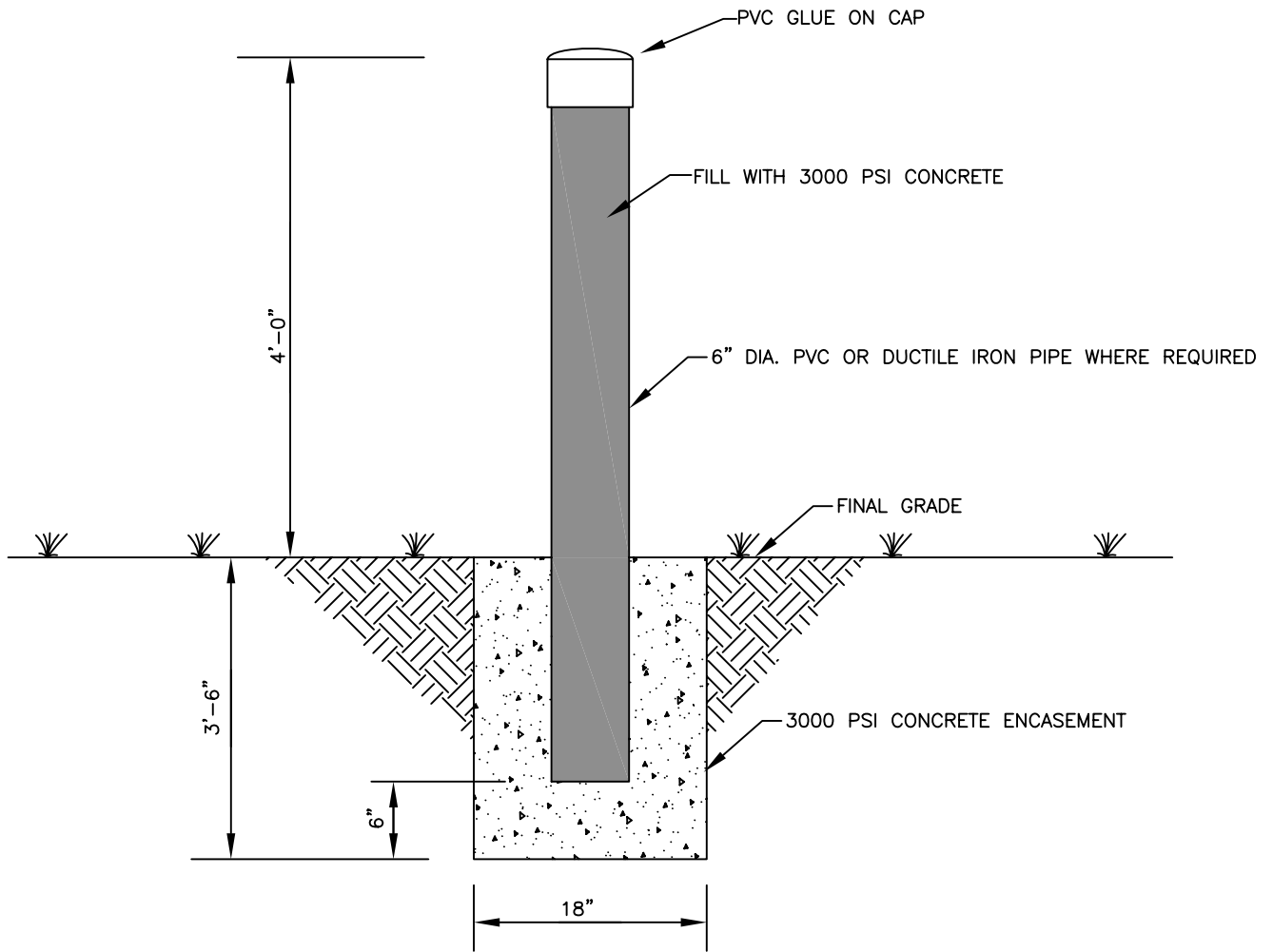
UTILITY DEPARTMENT
326 W. MARION AVE.
PUNTA GORDA, FL. 33950
(941) 575-3339 (941) 575-5006 FAX
E-MAIL utility@ci.punta-gorda.fl.us

WATER DISTRIBUTION

TAPPING SLEEVE & VALVE

W-13

REV BY	DATE
W.C.	9/24/03
TIM S	03/20/08



BOLLARD DETAIL

N.T.S.

CITY OF PUNTA GORDA

UTILITY DEPARTMENT
 326 W. MARION AVE.
 PUNTA GORDA, FL. 33950
 (941) 575-3339 (941) 575-5006 FAX
 E-MAIL utility@ci.punta-gorda.fl.us

WATER DISTRIBUTION

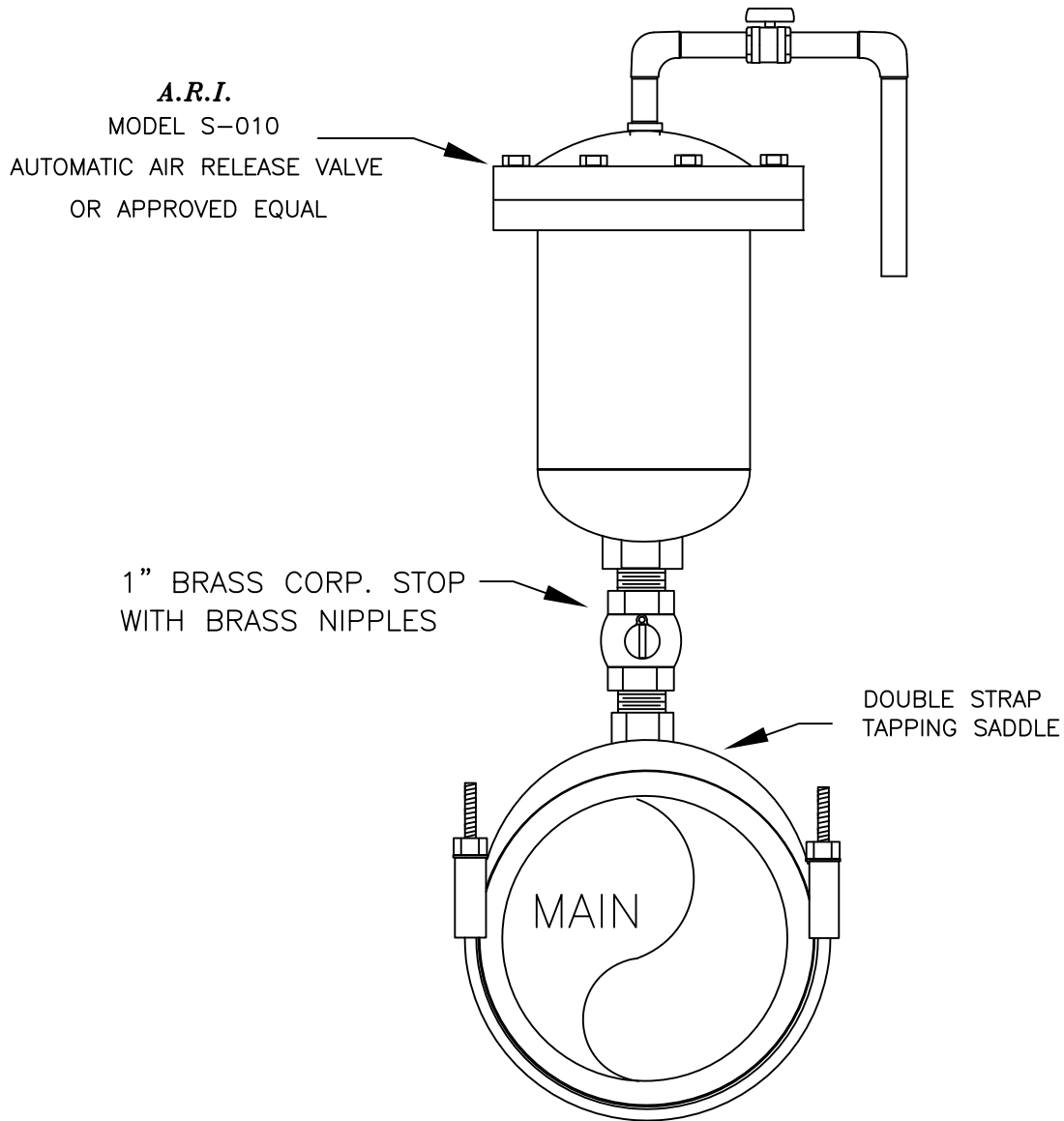
W-14

BOLLARD DETAIL

REV BY	DATE
TIM S	06/20/08

ABOVE GROUND AUTOMATIC AIR RELEASE VALVE WATER

3/4" PVC BALL VALVE (OPEN) AND PIPING



CITY OF PUNTA GORDA

UTILITY DEPARTMENT
326 W. MARION AVE.
PUNTA GORDA, FL. 33950
(941) 575-3339 (941) 575-5006 FAX
E-MAIL utility@ci.punta-gorda.fl.us

WATER DISTRIBUTION

AUTOMATIC AIR RELEASE
VALVE FOR WATER

W-15

REV BY	DATE
TIM S	03/07/11