



HURRICANE IRMA BRIEFING



7:00 PM EDT
Saturday, September 9, 2017

Prepared by:
Daniel Noah

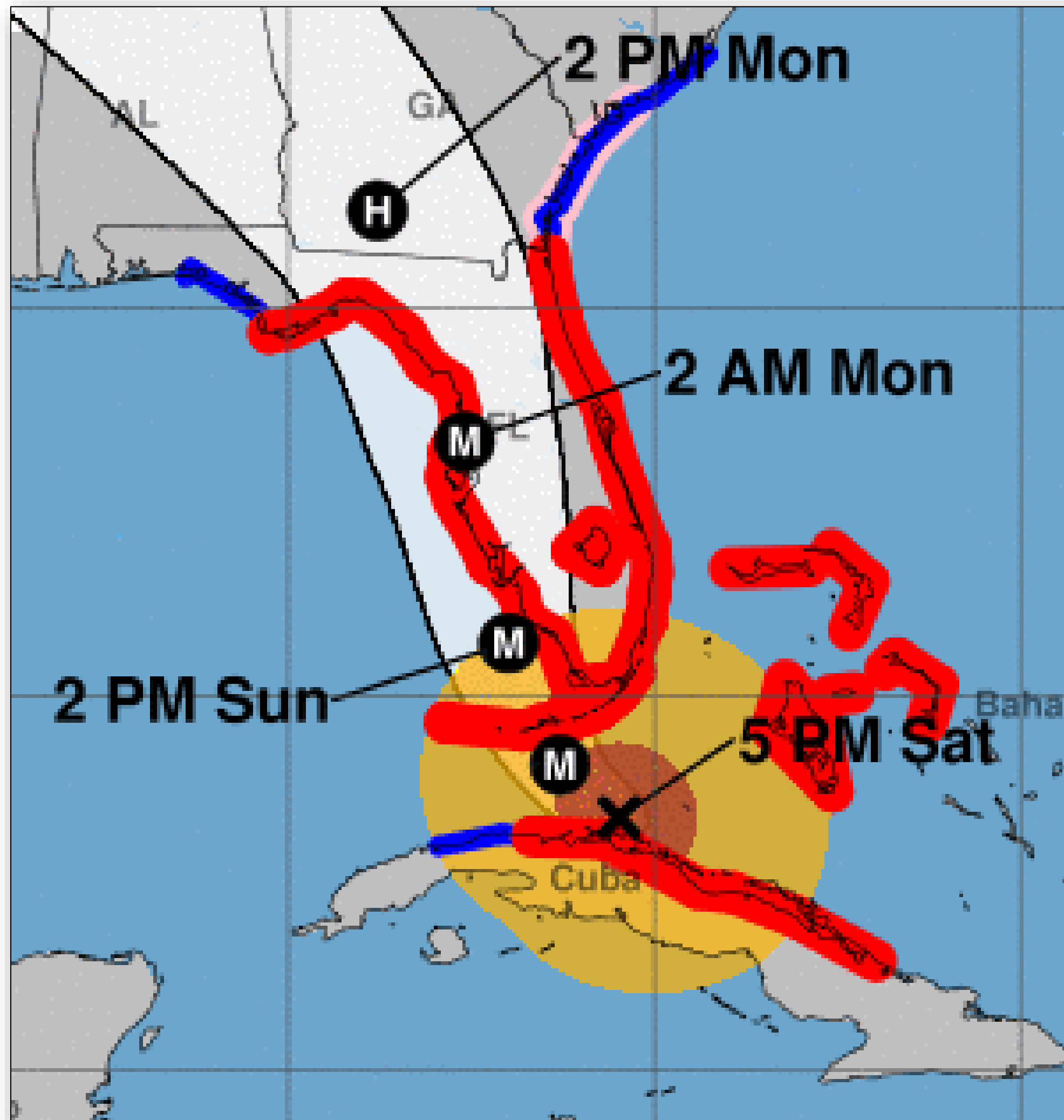
5 PM Sunday Situation Overview



Tampa Bay Area

WEATHER FORECAST OFFICE

Hurricane Irma



- No real change to the track
- Major Hurricane eye wall to move through the Keys then into southwest Florida Sunday afternoon
- Then into Tampa Bay late Sunday evening
- Then across the Nature Coast between 1-8 am Monday

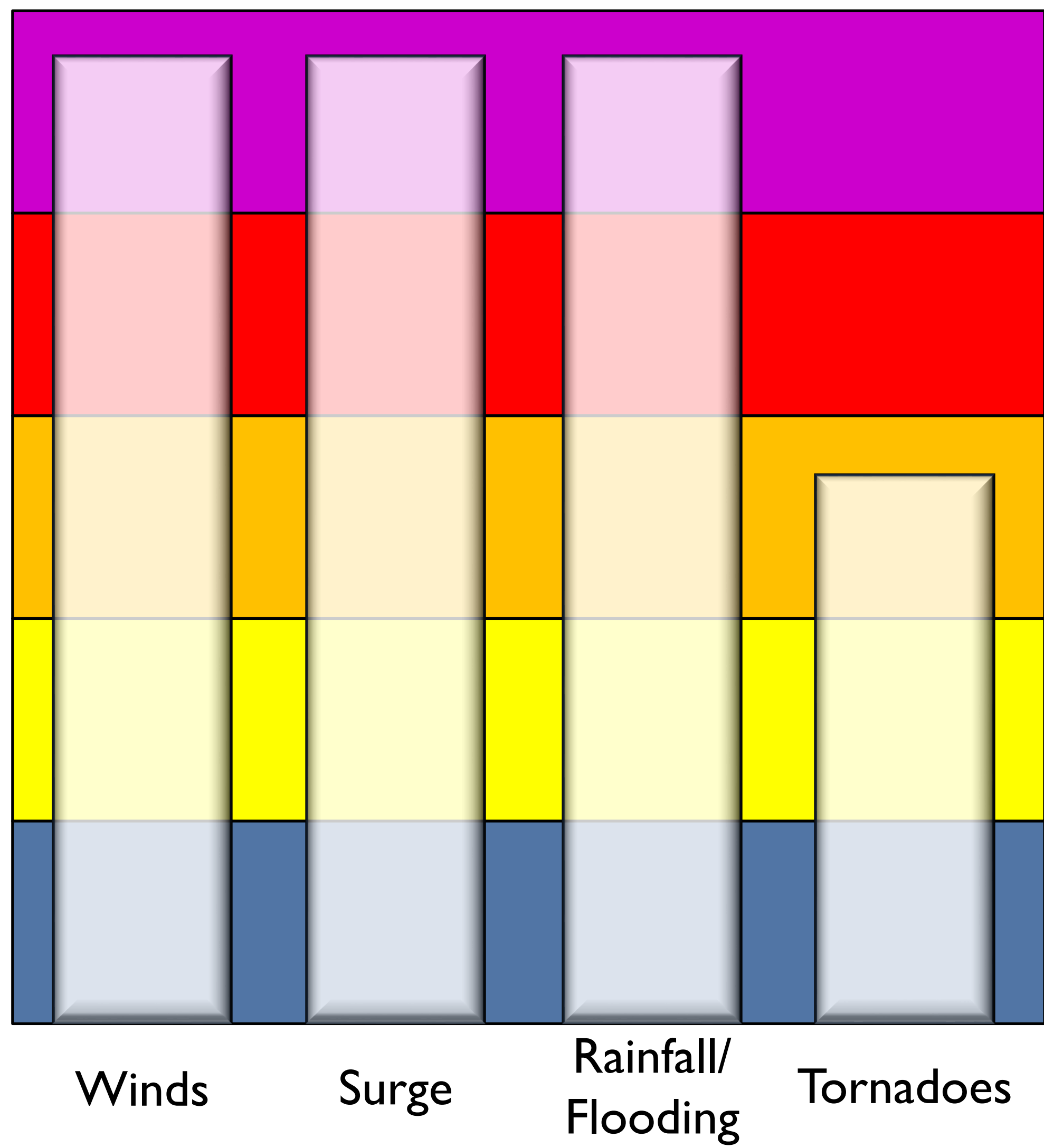
Threat Levels



Tampa Bay Area

WEATHER FORECAST OFFICE

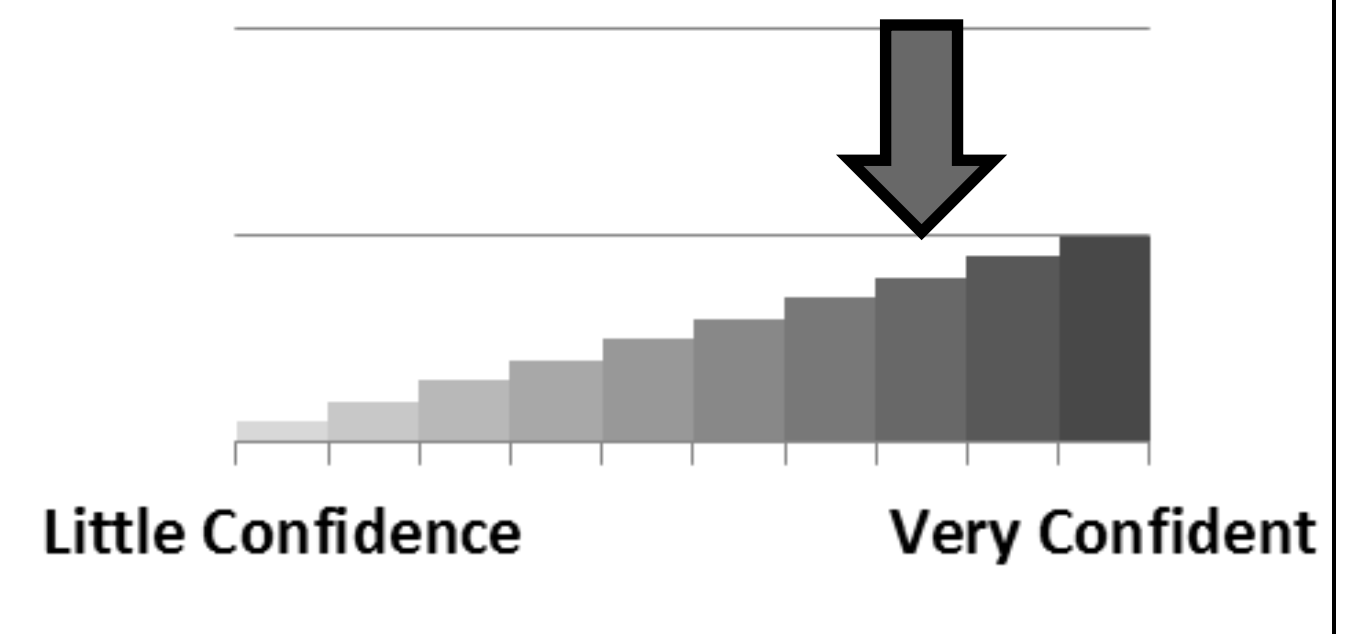
Hurricane Irma



Threat Level

- Extreme
- High
- Moderate
- Low
- None

Forecast Confidence



Current Satellite/Radar View

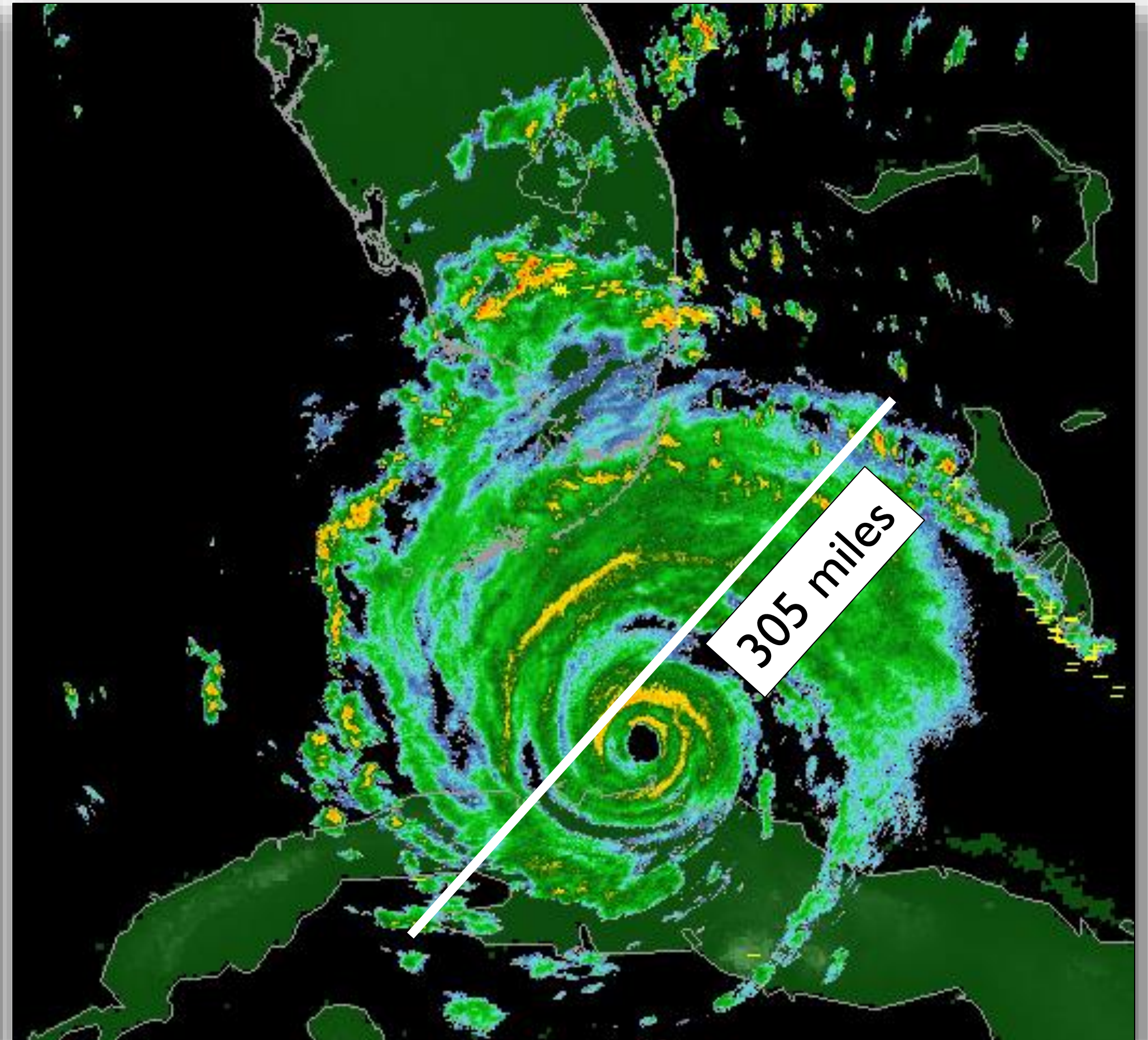
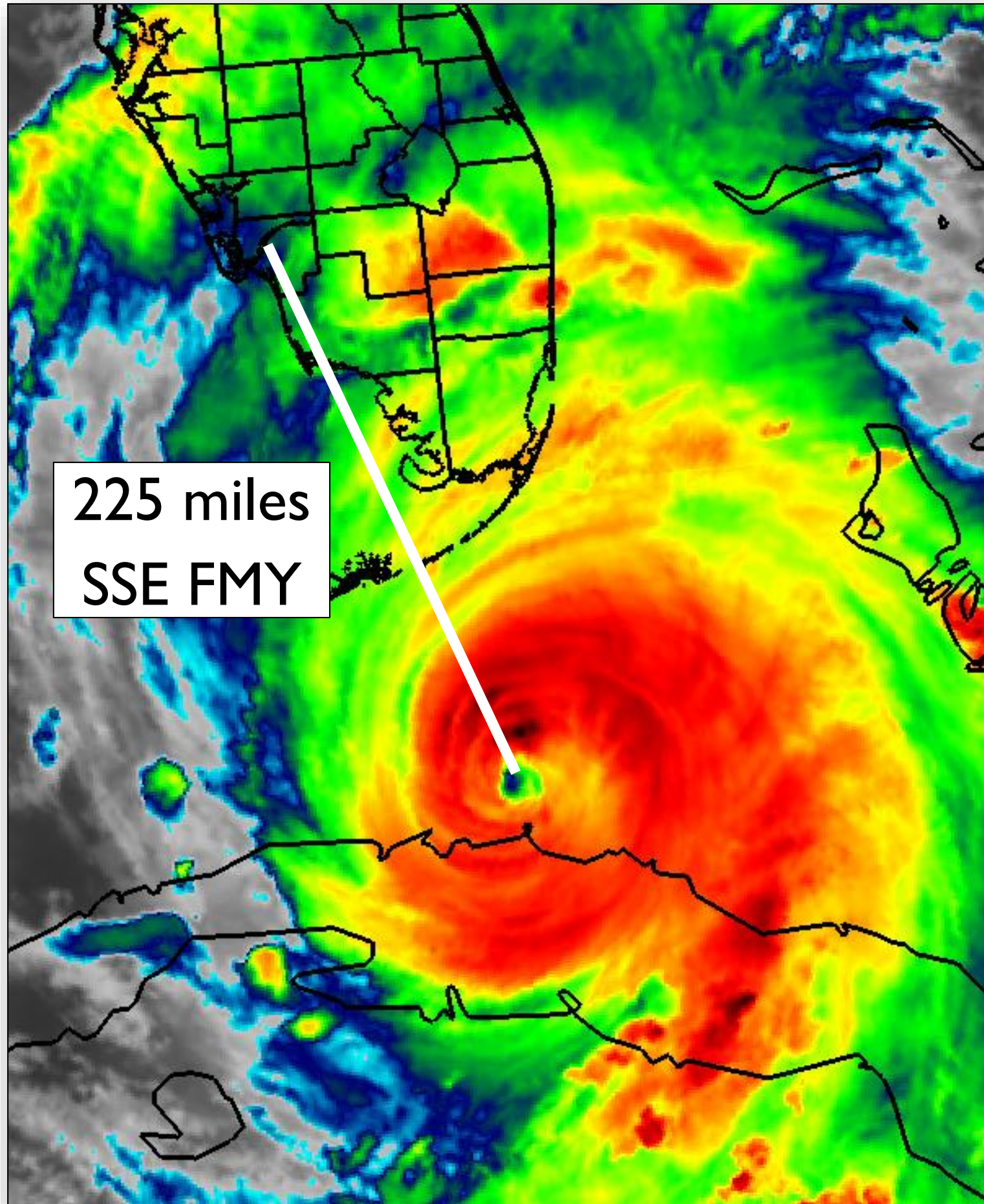


Tampa Bay Area

WEATHER FORECAST OFFICE

Hurricane Irma

Max winds 125 mph and moving west northwest at 9 mph



9/9/2017 6:50 PM



[fb.com/NWSTampaBay](https://www.facebook.com/NWSTampaBay)



[@NWSTampaBay](https://twitter.com/NWSTampaBay)



[weather.gov/tampabay](https://www.weather.gov/tampabay)



[NWS Tampa Bay Tropical Products](#)

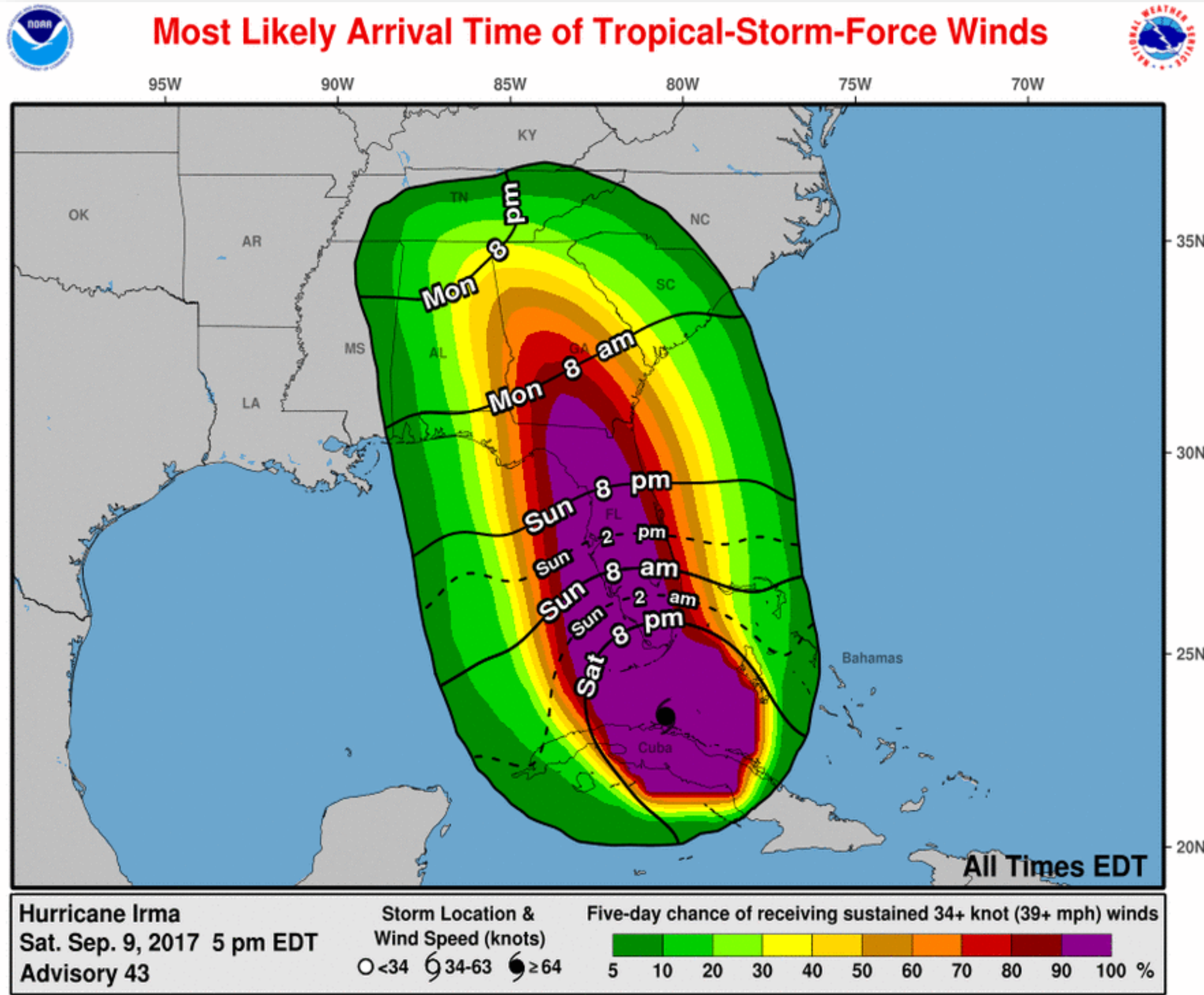
Most Likely Time of Arrival



Tampa Bay Area

WEATHER FORECAST OFFICE

Hurricane Irma



Tropical Force winds will impact West Central and Southwest Florida Sunday last 24 hours

Most Likely Time of Arrival

- Fort Myers: 6 am Sunday
- Bradenton: 10 am Sunday
- Sebring: 10 am Sunday
- St Pete/Tampa: 2 pm Sunday
- Lakeland: 4 pm Sunday
- Brooksville: 6 pm Sunday
- The Villages: 9 pm Sunday
- Chiefland: 10 pm Sunday

However, uncertainty in forecast means wind could arrive 8 hours earlier.



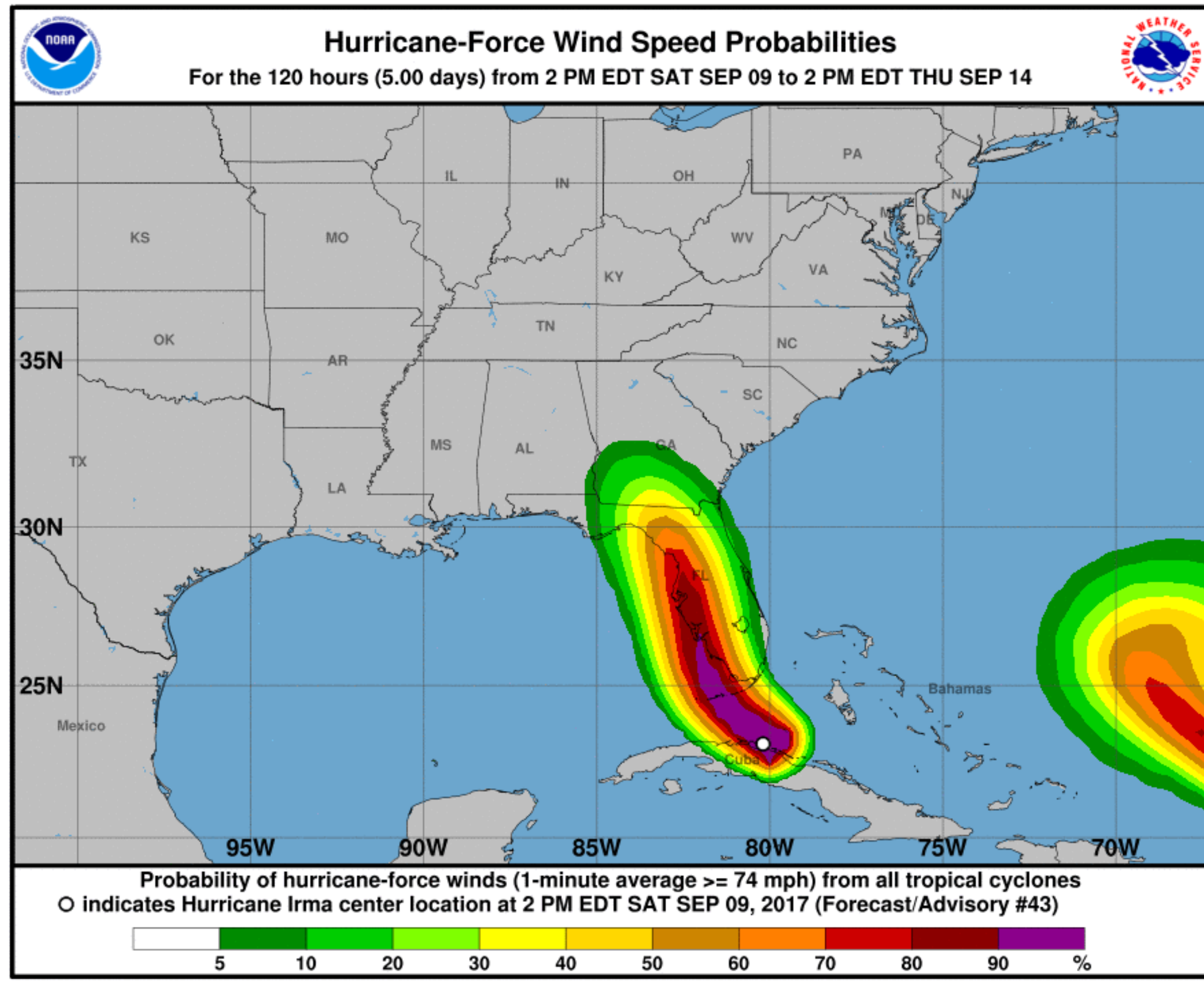
Wind Speed Probabilities

Hurricane Irma



Tampa Bay Area

WEATHER FORECAST OFFICE



Hurricane Force winds likely western half of the Florida Peninsula spreading from south to north Sunday and Monday and lasting about 9 hours

Most Likely Time of Arrival

- Fort Myers, Punta Gorda, Arcadia - Sunday afternoon
- Sarasota, Bradenton, Wauchula, and Sebring - Late Sunday afternoon or early evening
- Clearwater, Tampa, Lakeland and Port Richey - early Sunday evening
- Brooksville, Crystal River, and The Villages – Late Sunday evening
- Chiefland – Around midnight Sunday Night



Potential Storm Surge Flooding

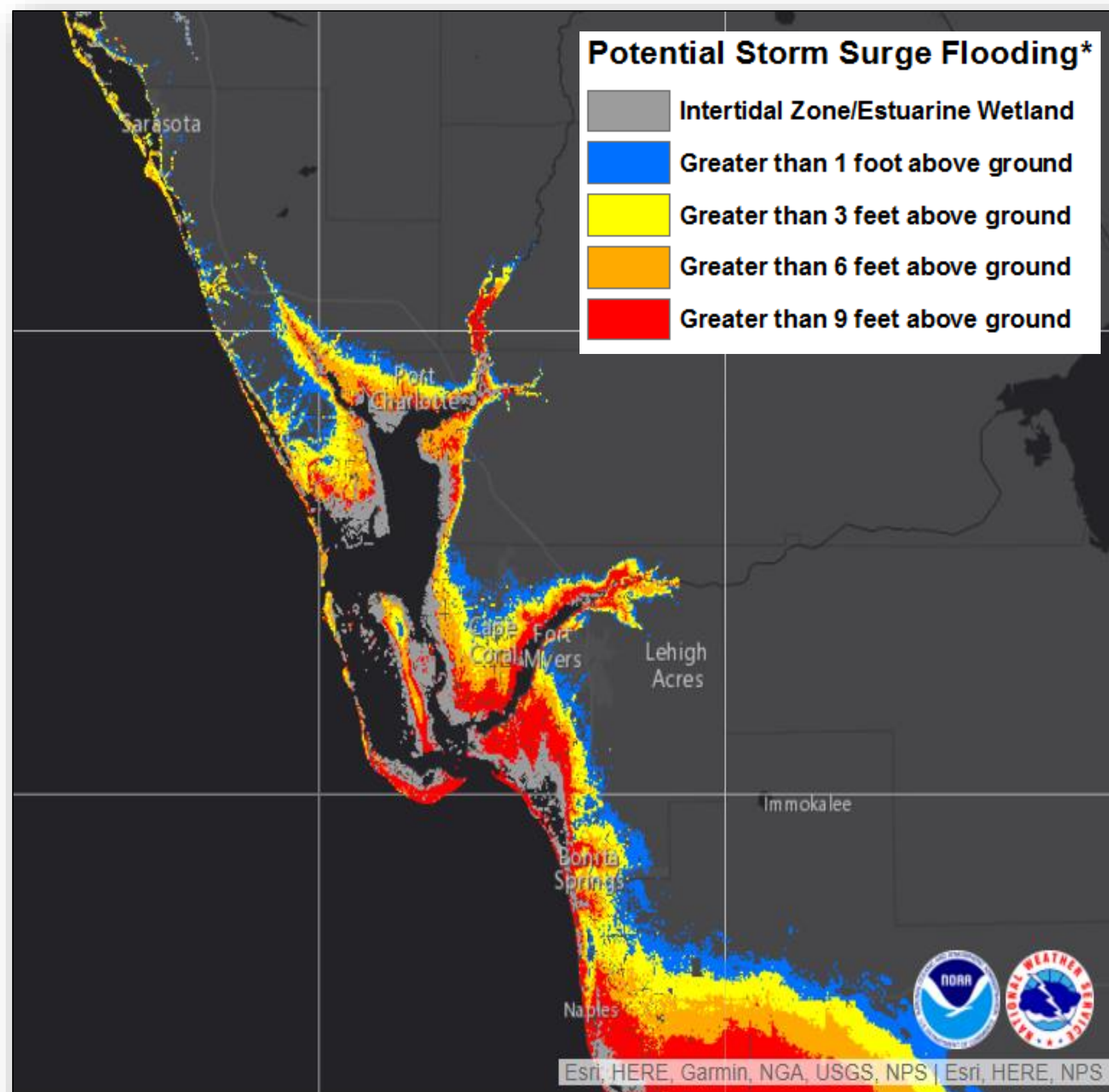


Tampa Bay Area

WEATHER FORECAST OFFICE

Hurricane Irma

Note: This graphic shows where storm surge inundation could occur in any one location. It depicts *a reasonable worst case scenario*.



- **Color Scale**
 - Red = 9-15 feet AGL
 - Orange = 6-9 feet AGL
 - Yellow = 4-6 feet AGL
- **Timing:** Storm surge inundation could begin as early as Sunday evening; greatest at Sunday night/early Monday morning high tide
- **Expect a 12 hour event, longer directly at the coast**



Potential Storm Surge Flooding

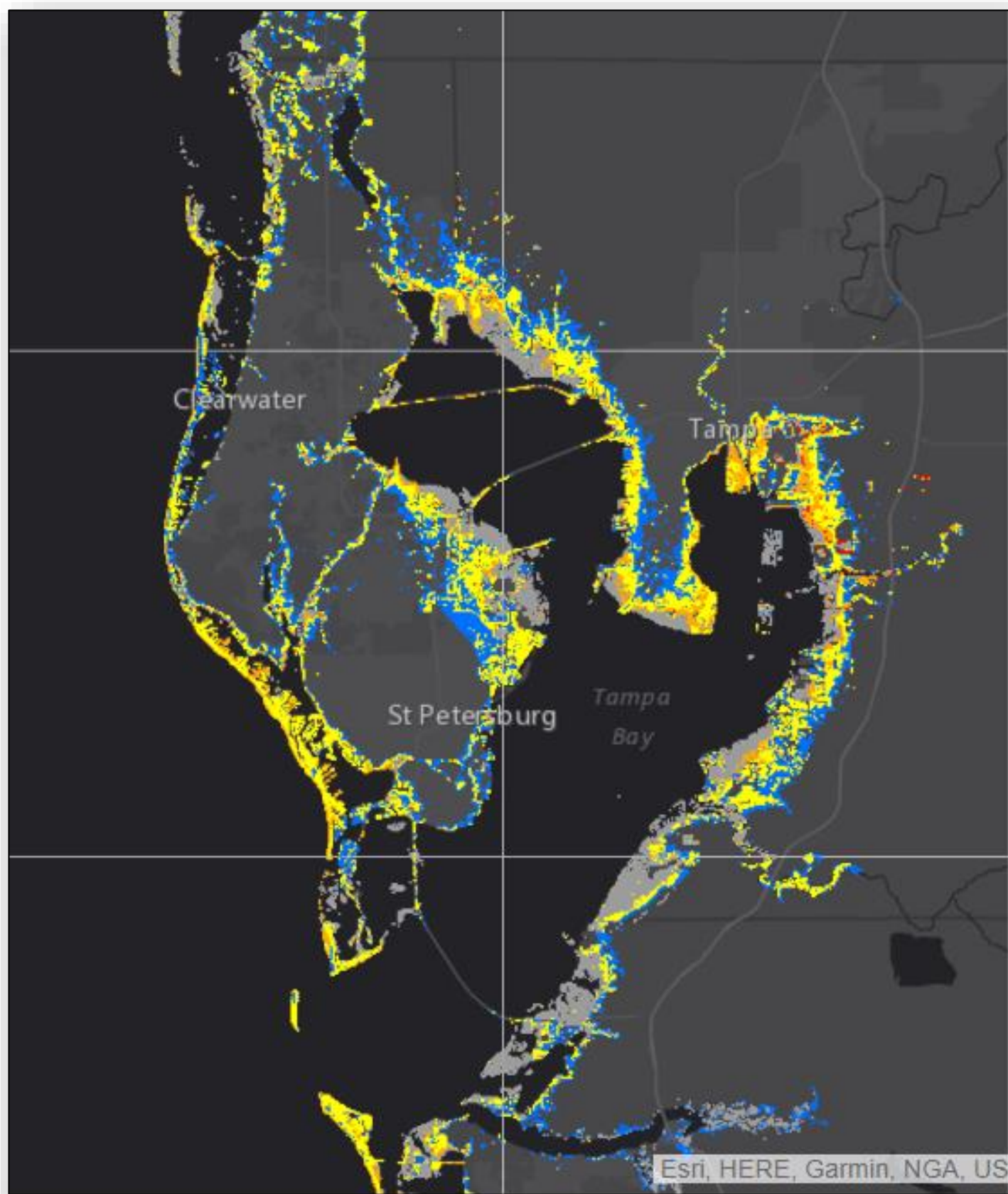


Tampa Bay Area

WEATHER FORECAST OFFICE

Hurricane Irma

Note: *This graphic shows where storm surge inundation could occur in any one location. It depicts **a reasonable worst case scenario.***



- Highest 5-8 feet AGL; highest in northeast Hillsborough Bay.
- Timing: Storm surge inundation could begin as early as late Sunday night/early Monday morning; greatest at Monday morning high tide (5:27 AM Hillsborough Bay)
- Expect a 12 hour event, longer directly at the coast

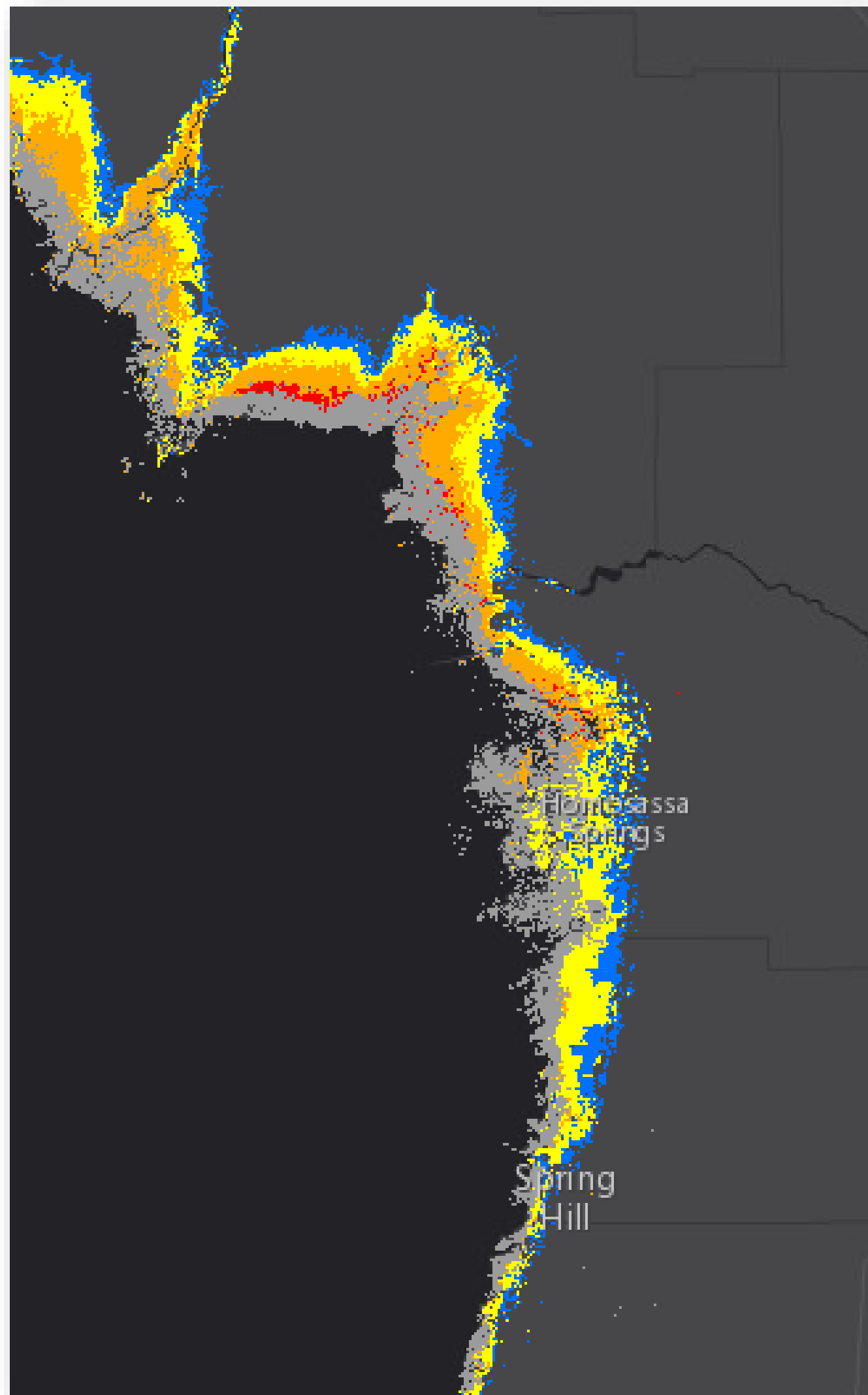
Potential Storm Surge Flooding



Tampa Bay Area

WEATHER FORECAST OFFICE

Hurricane Irma



- Color Scale
 - Red = 9-15 feet AGL
 - Orange = 6-9 feet AGL
 - Yellow = 4-6 feet AGL
- Timing: Storm surge inundation could begin as early as Monday morning
- Above normal tides continue Monday night
- Expect a 12 hour event, longer directly at the coast



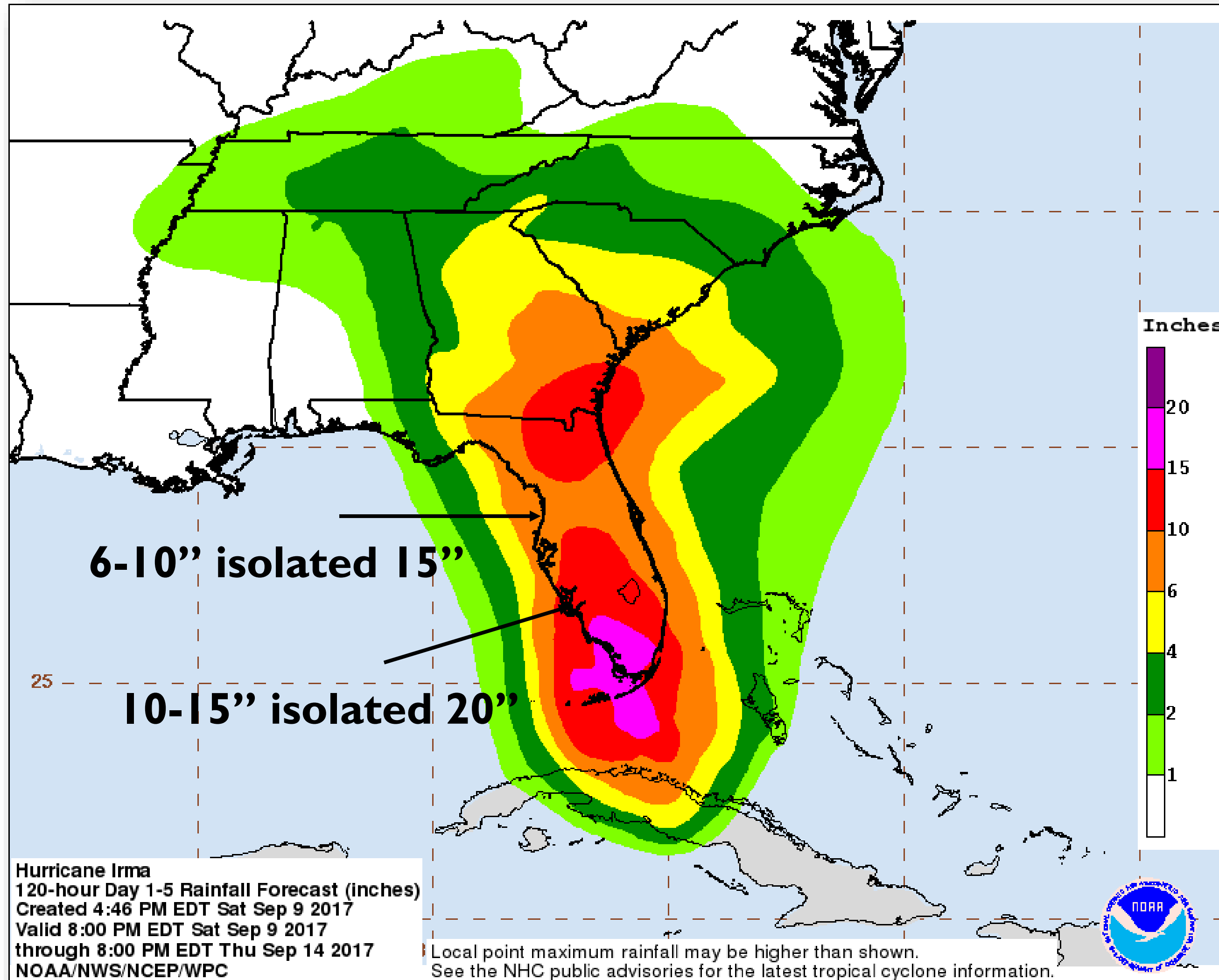
Expected Storm Total Rainfall



Tampa Bay Area

WEATHER FORECAST OFFICE

Hurricane Irma



Excessive Rainfall Outlook

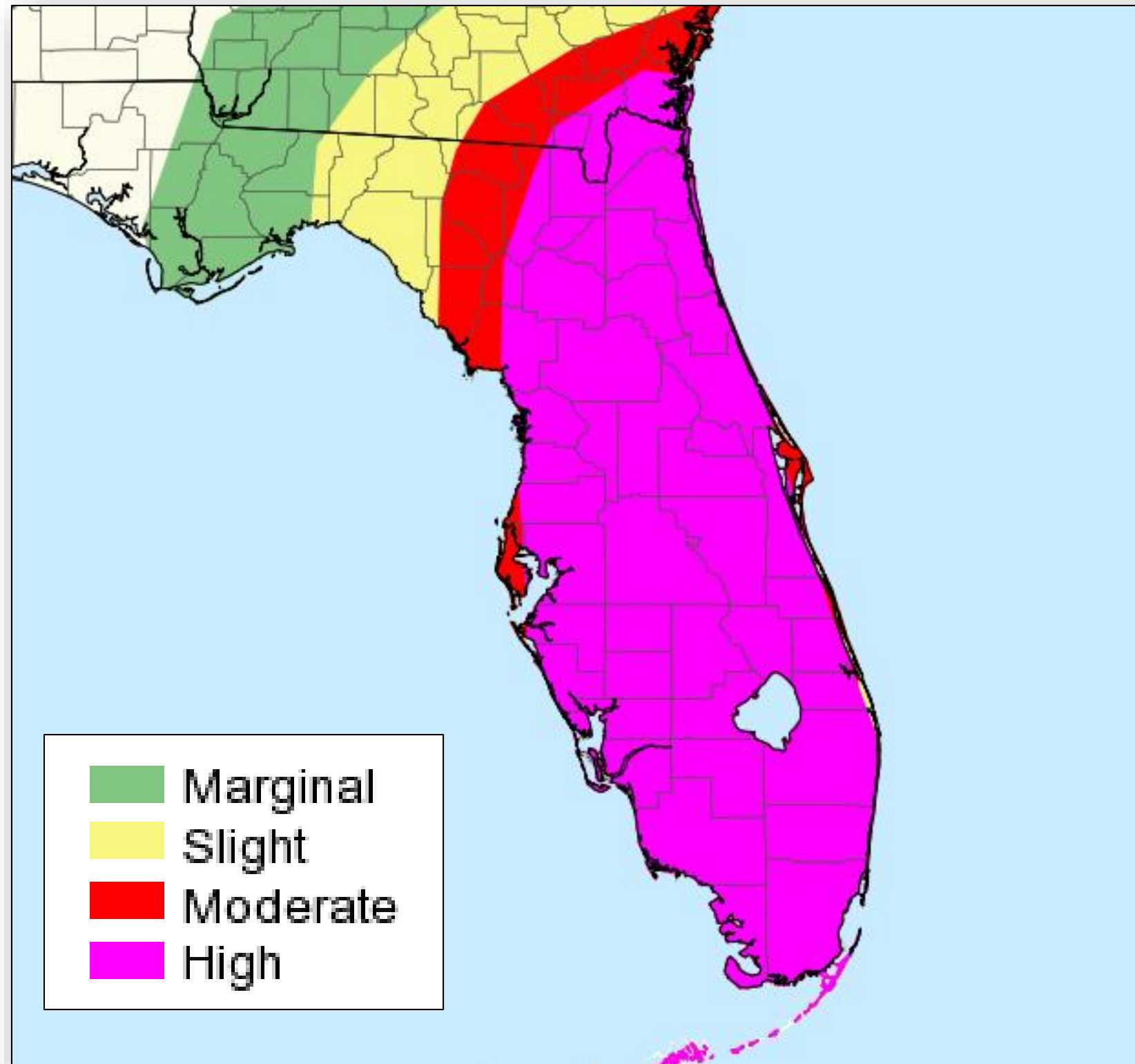


Tampa Bay Area

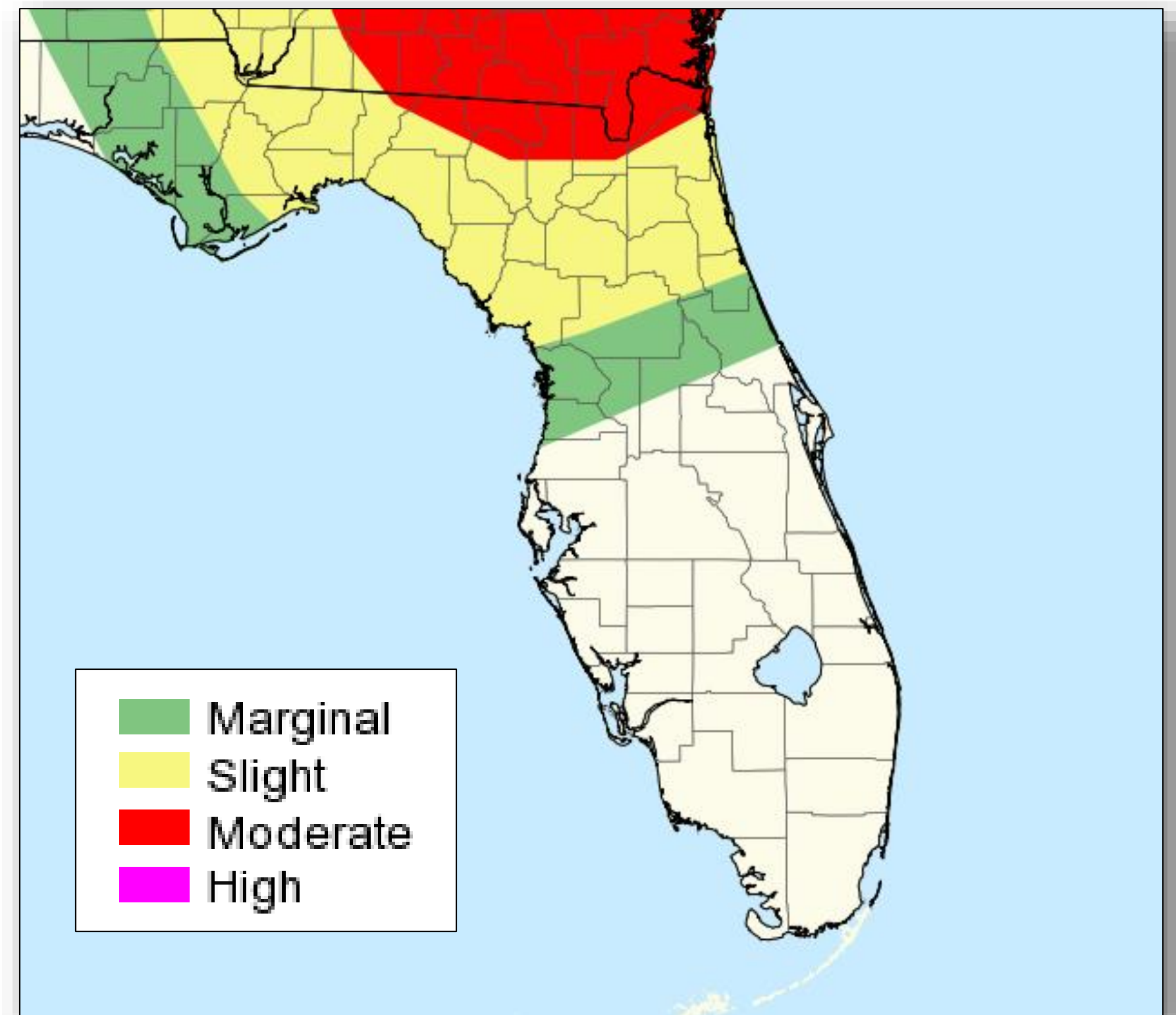
WEATHER FORECAST OFFICE

Hurricane Irma

8 am Sunday – 8 am Monday



8 am Monday – 8 am Tuesday



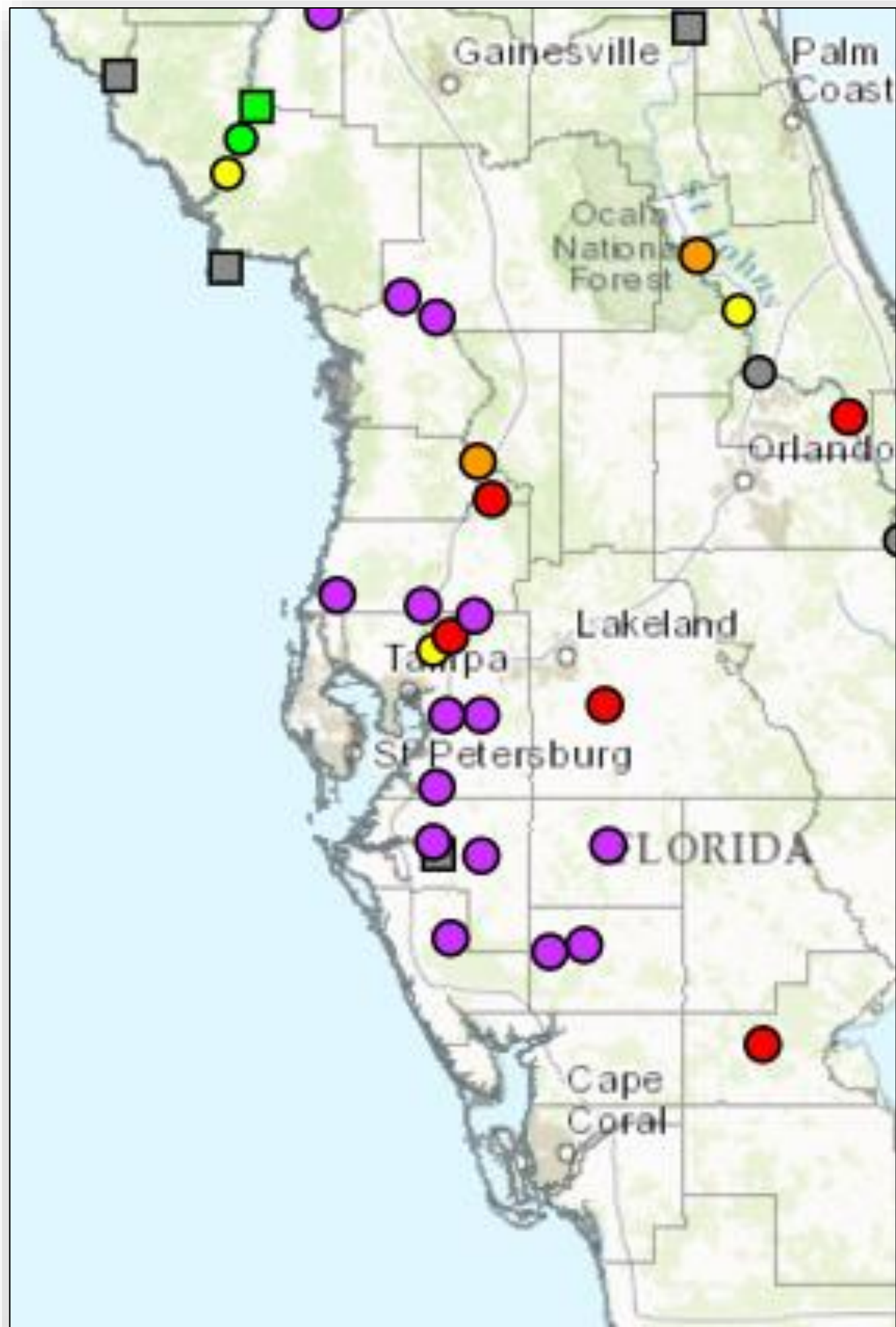
River Flood Flooding



Tampa Bay Area

WEATHER FORECAST OFFICE

Hurricane Irma



- <http://weather.gov/serfc>
- Rapid rise from no flooding to major flooding from Sunday afternoon and evening
- Flooding persists into the weekend

- Purple = Major Flood
- Red = Moderate Flood
- Orange = Minor Flood



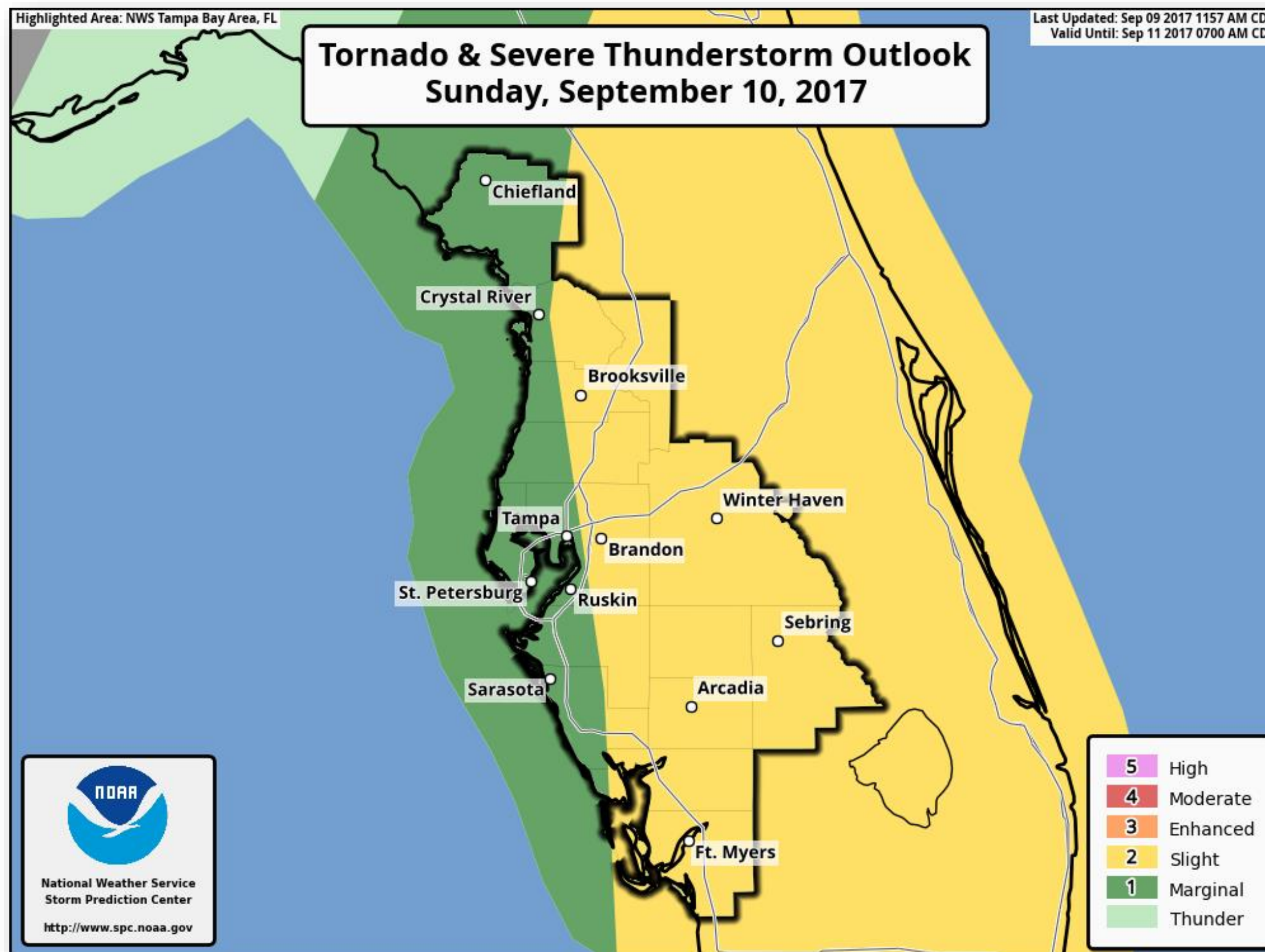
Tornado Potential

Hurricane Irma



Tampa Bay Area

WEATHER FORECAST OFFICE



- Could move at 50 to 60 mph
- Greatest chance will be east of the track of the hurricane





- Surge, wind, flooding from heavy rain will be the main impacts Sunday and Monday

If NWS Ruskin goes down, our backup offices will be Lake Charles, LA and Jackson, MS. National Weather Service Southern Region HQ will coordinate the transfer.





HURRICANE IRMA BRIEFING

*The Next Briefing Will Be:
Sunday at 1:00 AM EDT*



fb.com/NWSTampaBay



[@NWSTampaBay](https://twitter.com/NWSTampaBay)



weather.gov/tampabay



[NWS Tampa Bay Tropical Products](#)