



HURRICANE IRMA BRIEFING



1:00 PM EDT
Saturday, September 9, 2017

Prepared by:
Brian LaMarre



fb.com/NWSTampaBay



[@NWSTampaBay](https://twitter.com/NWSTampaBay)



weather.gov/tampabay



[NWS Tampa Bay Tropical Products](#)

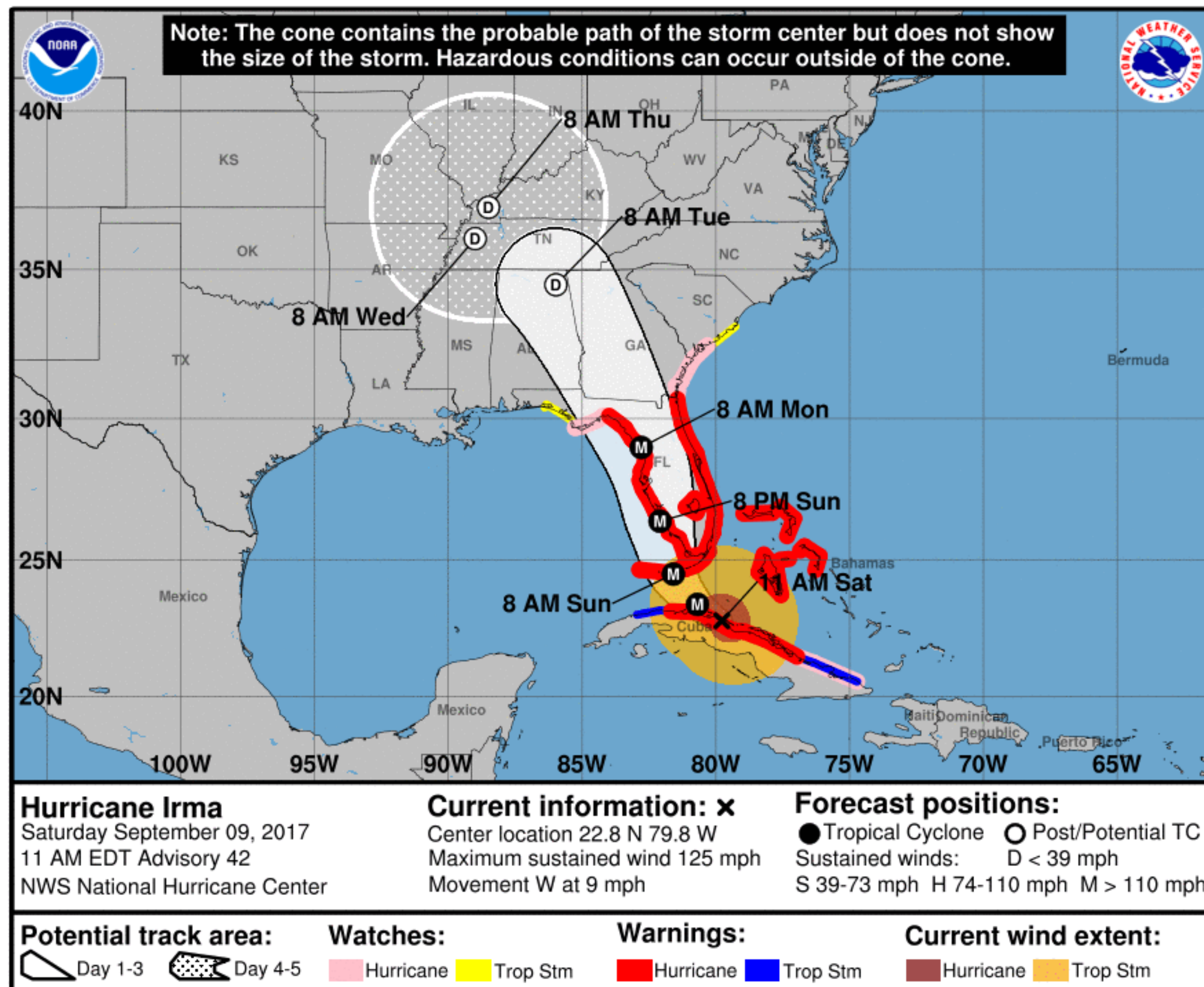
Situation Overview

Hurricane Irma



Tampa Bay Area

WEATHER FORECAST OFFICE



NOTE: Do not focus on the exact track. Impacts can occur well outside the area enclosed by the cone.

- No track change; still expecting extreme impacts to FL Gulf Coast
- Hurricane Warning for all of west and southwest Florida
- Minor change to intensity due to interaction with Cuba – expected to remain a Major Hurricane at landfall.

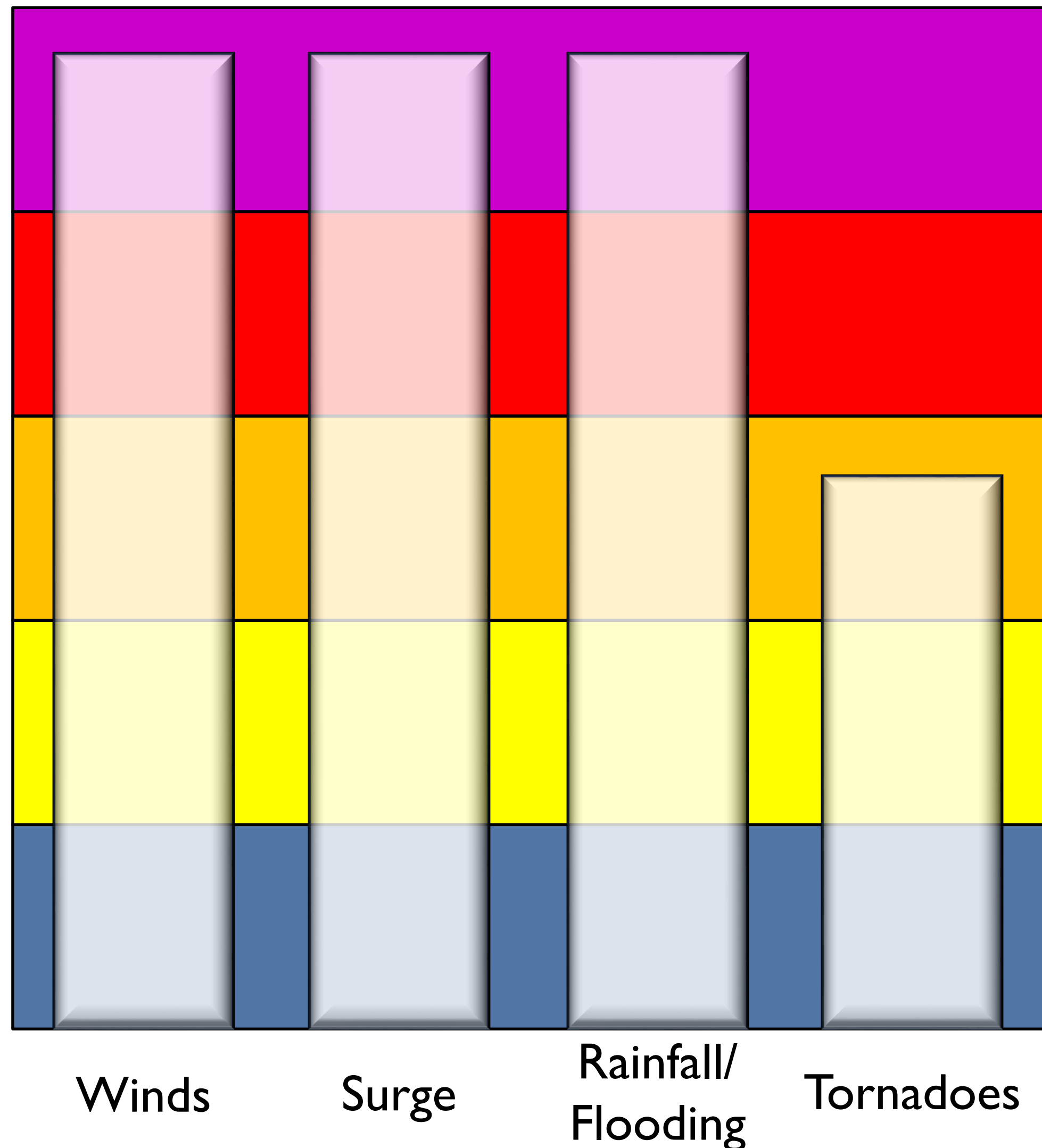
Threat Levels

Hurricane Irma



Tampa Bay Area

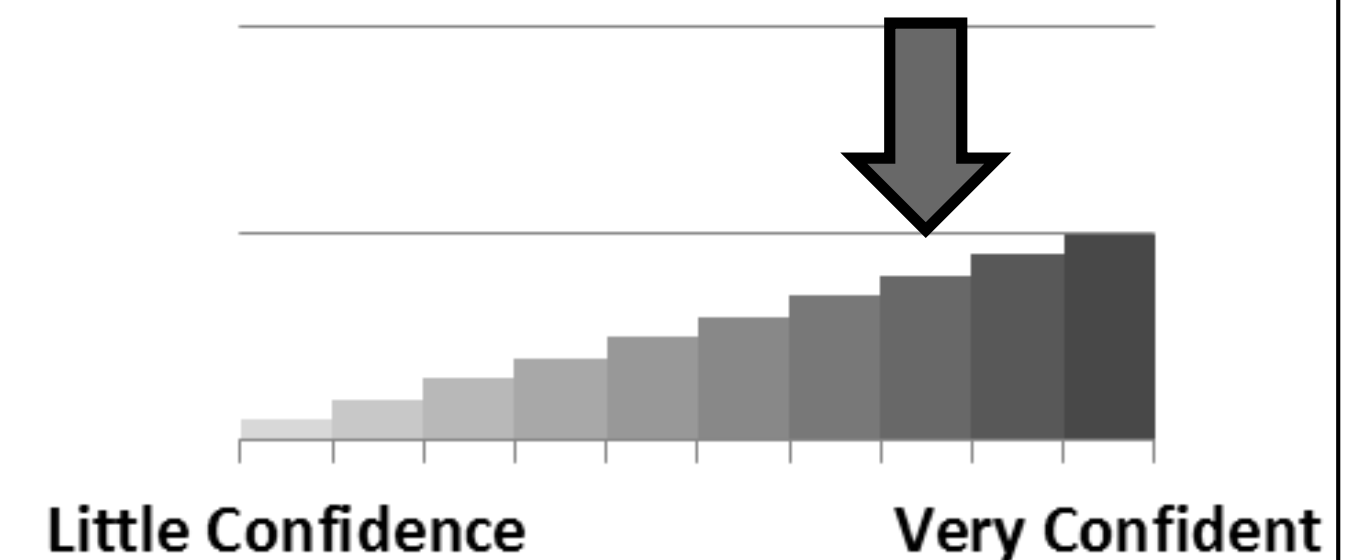
WEATHER FORECAST OFFICE



Threat Level

- Extreme
- High
- Moderate
- Low
- None

Forecast Confidence



Wind Speed Probabilities

Hurricane Irma



Tampa Bay Area

WEATHER FORECAST OFFICE



- Increased in hurricane force wind potential
- Charlotte/Lee County have 80% chance of hurricane force winds
- Tampa Bay area plus central Florida have 70% chance of hurricane force winds
- Nature Coast has a 65% chance of hurricane force winds

Most Likely Time of Arrival

Hurricane Irma



Tampa Bay Area

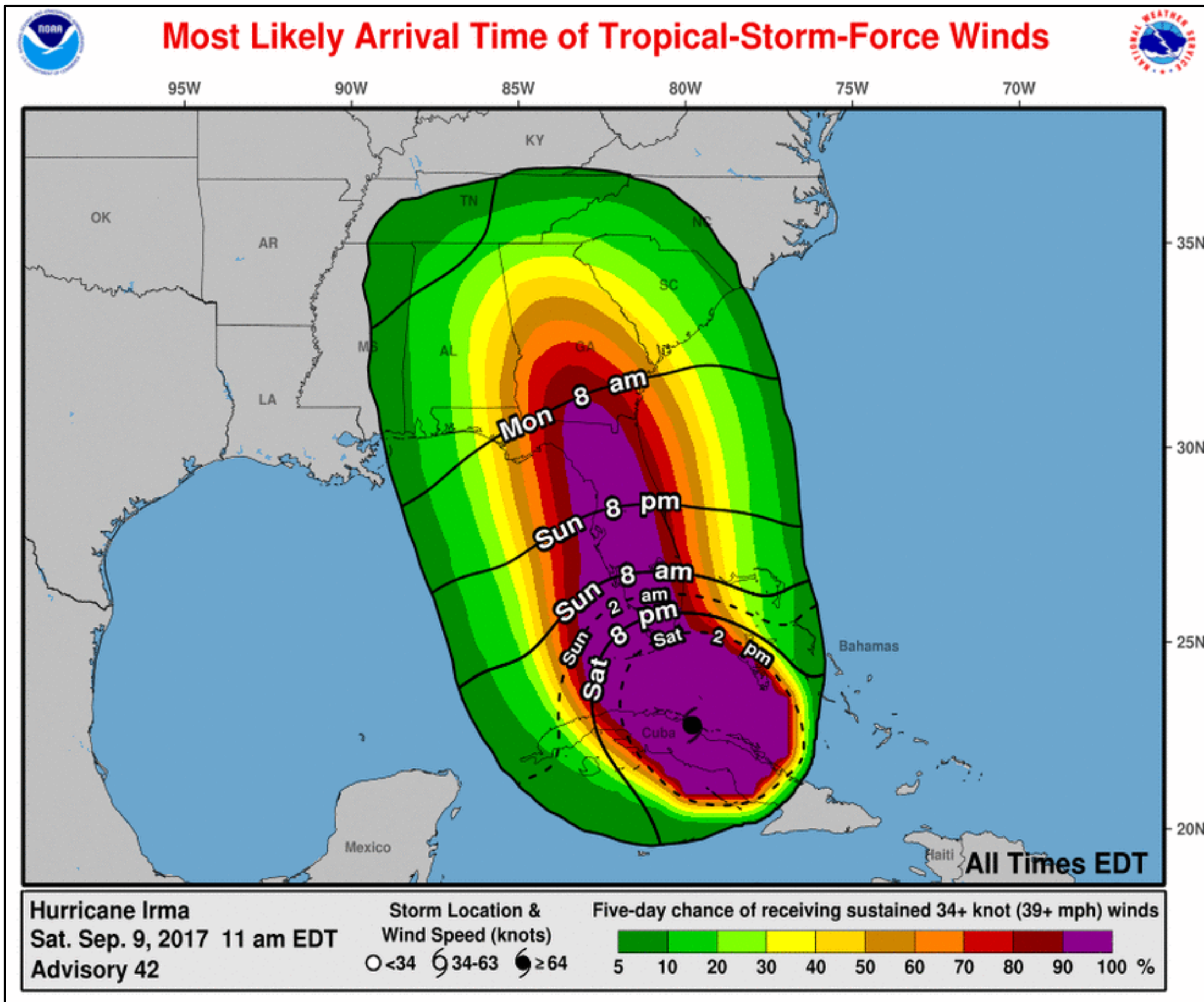
WEATHER FORECAST OFFICE

Tropical Force winds will impact West Central and Southwest Florida Sunday

Most Likely Time of Arrival

- Fort Myers: 6 am Sunday
- Bradenton: 10 am Sunday
- Sebring: 10 am Sunday
- St Pete/Tampa: 2 pm Sunday
- Lakeland: 4 pm Sunday
- Brooksville: 6 pm Sunday
- The Villages: 9 pm Sunday
- Chiefland: 10 pm Sunday

However, uncertainty in forecast means wind could arrive 12 hours earlier.



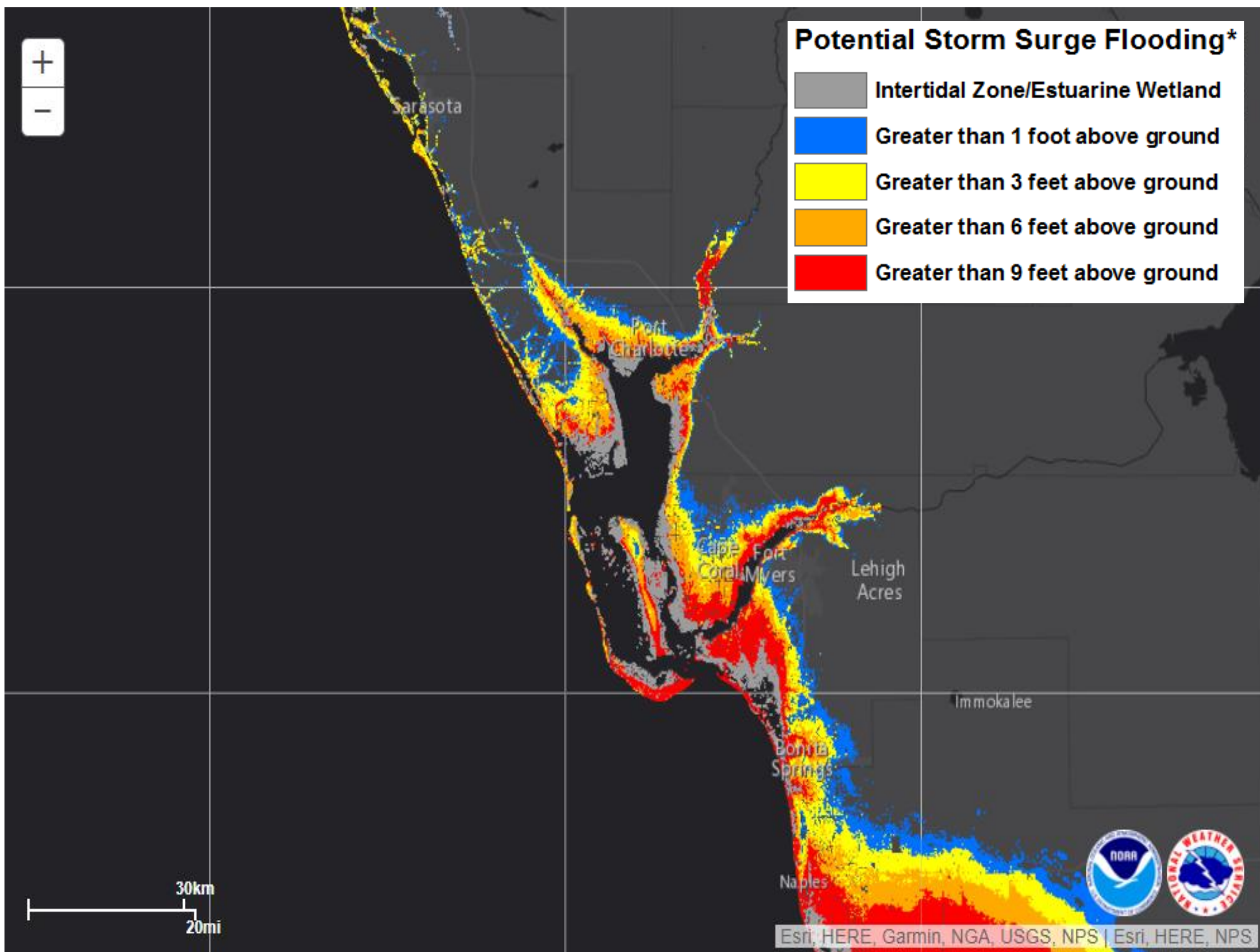
Potential Storm Surge Flooding



Tampa Bay Area

WEATHER FORECAST OFFICE

Hurricane Irma



- Red = 10-15 feet AGL
- Orange = 6-9 feet AGL
- Yellow = 4-6 feet AGL
- Timing: Storm surge inundation could begin as early as Sunday evening; greatest at Sunday night/early Monday morning high tide

Note: This graphic shows where storm surge inundation could occur in any one location. It depicts a reasonable worst case scenario.

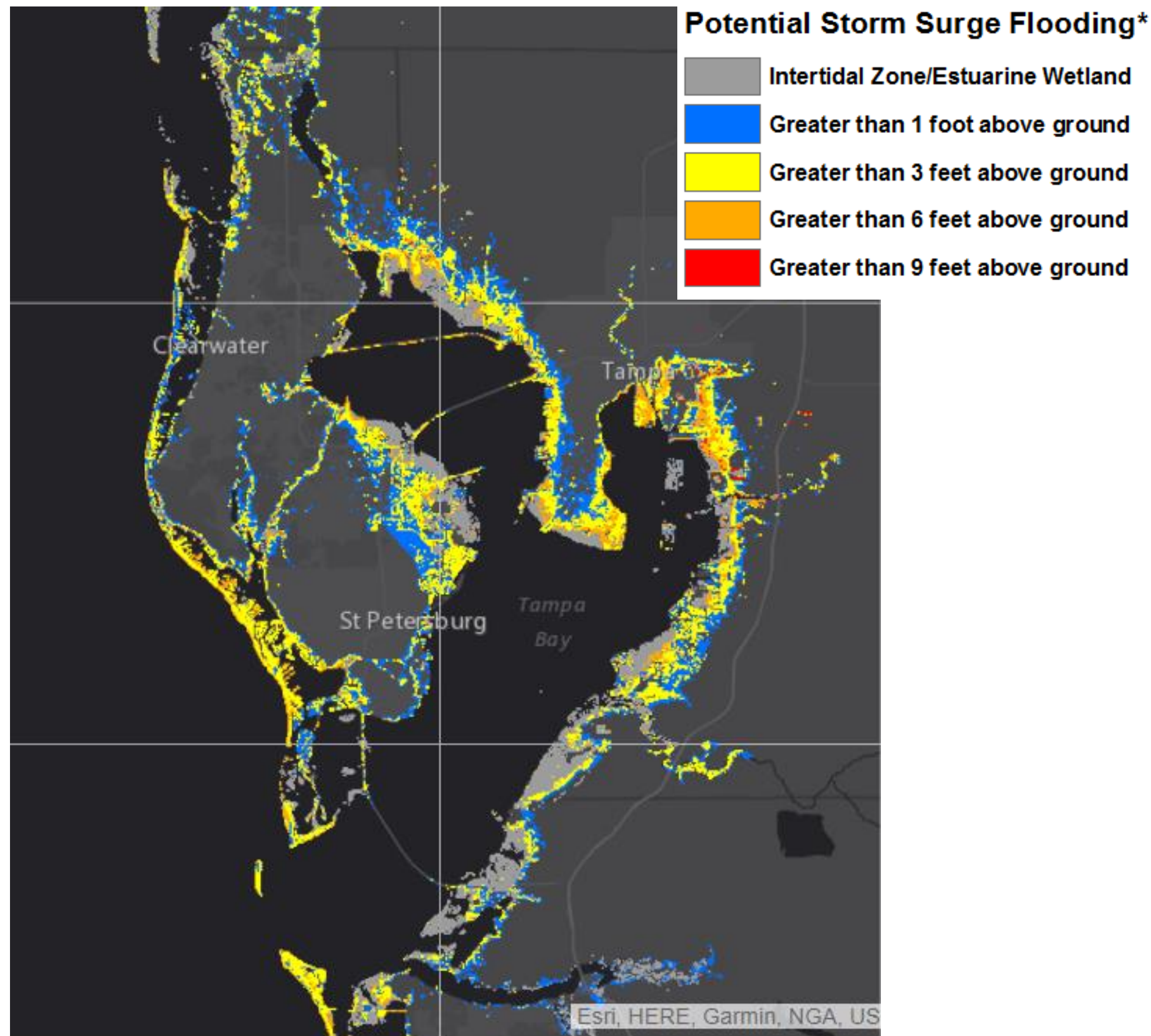
Potential Storm Surge Flooding



Tampa Bay Area

WEATHER FORECAST OFFICE

Hurricane Irma



- Highest 5-9 feet AGL; highest in northeast Hillsborough Bay.
- Timing: Storm surge inundation could begin as early as late Sunday night/early Monday morning; greatest at Monday morning high tide (5:27 AM Hillsborough Bay)

Note: This graphic shows where storm surge inundation could occur in any one location. It depicts a reasonable worst case scenario.

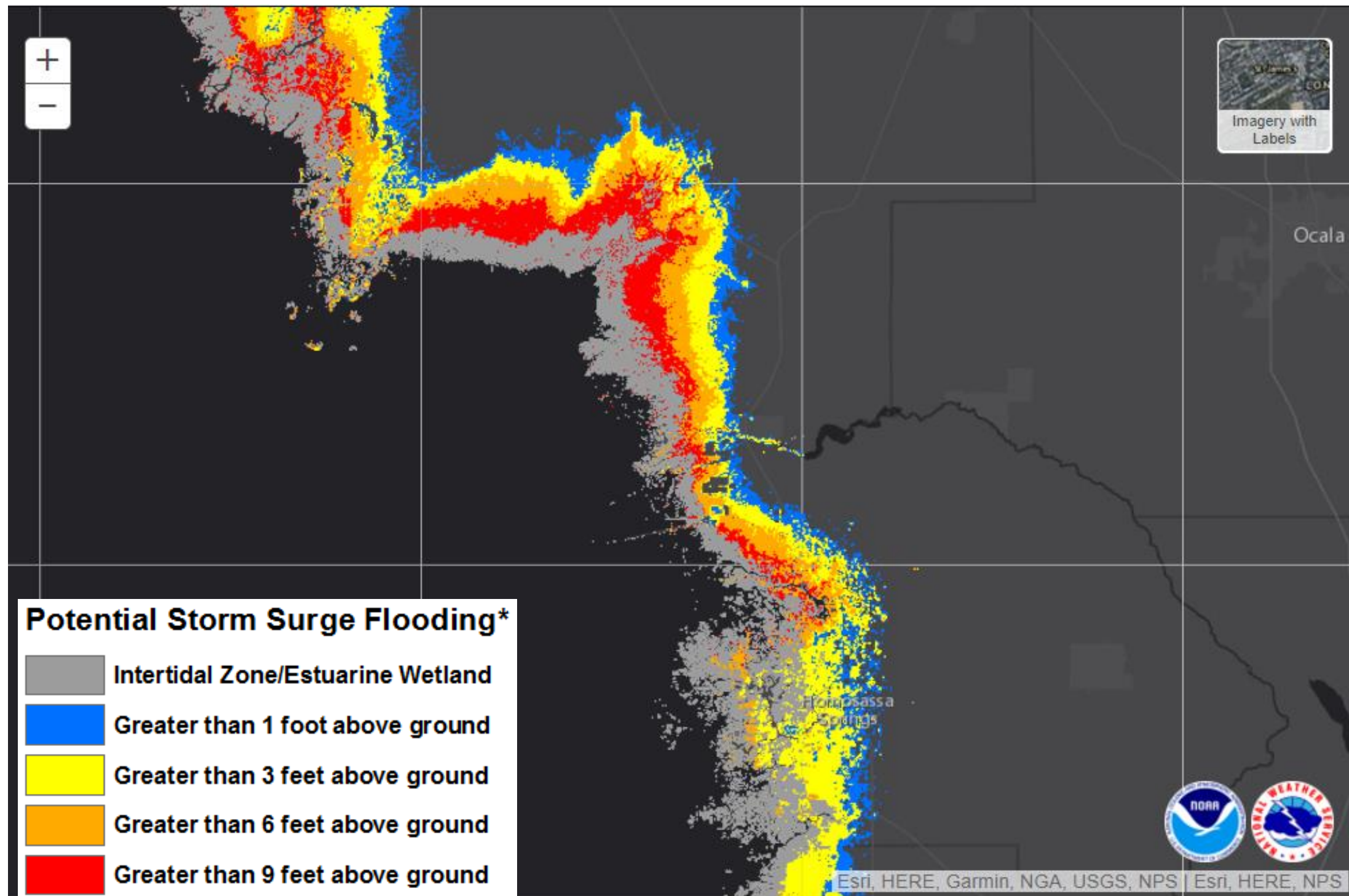
Potential Storm Surge Flooding



Tampa Bay Area

WEATHER FORECAST OFFICE

Hurricane Irma



- Highest 4-7 feet AGL, possibly higher depending on track
- Timing: Storm surge inundation could begin as early as Monday morning; greatest at Monday afternoon high tide

Note: *This graphic shows where storm surge inundation could occur in any one location. It depicts a reasonable worst case scenario.*

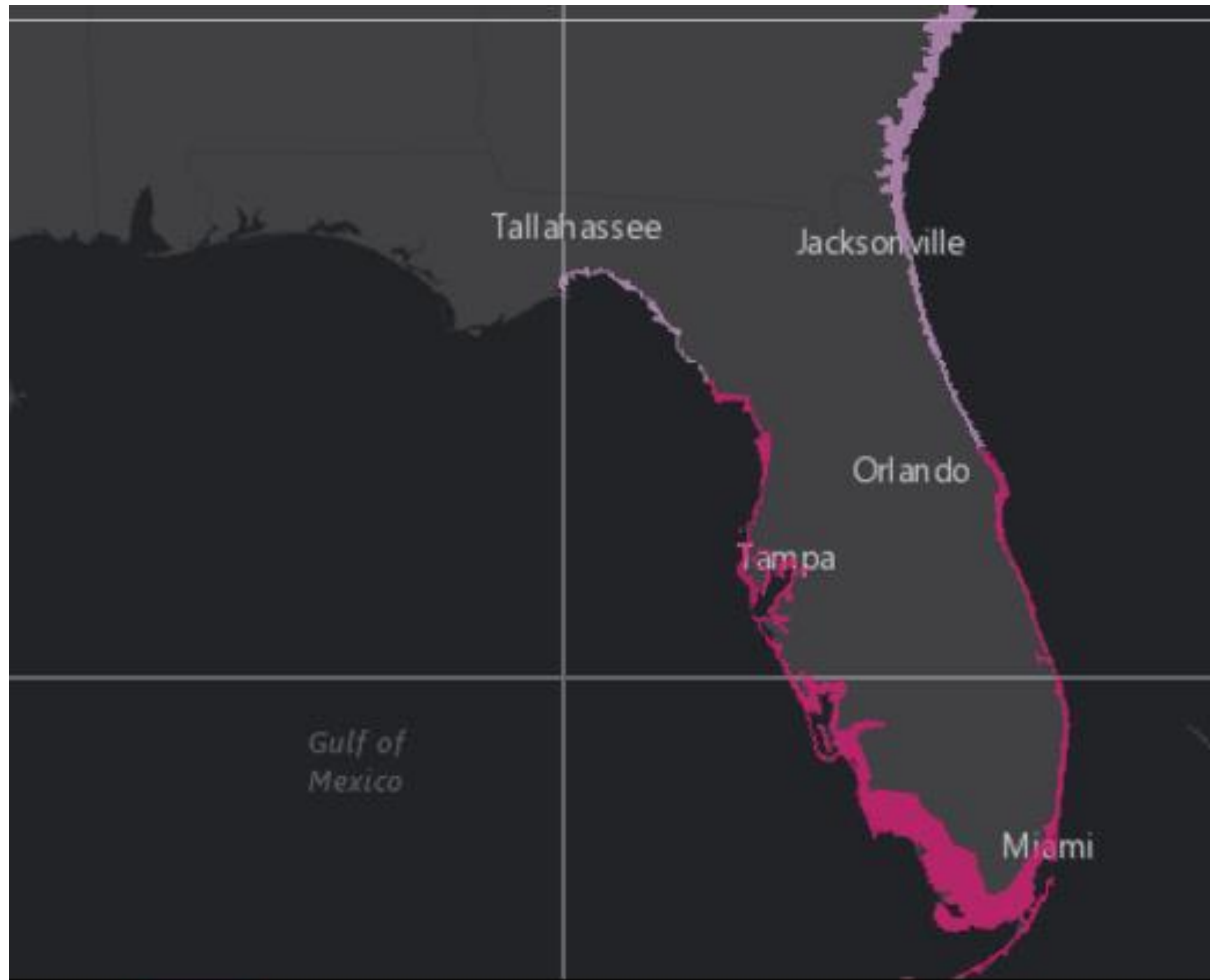
Storm Surge Watch/Warning





Tampa Bay Area

WEATHER FORECAST OFFICE

Hurricane Irma



 Storm Surge Warning
 Storm Surge Watch

- Storm Surge Warning for all of west-central and southwest Florida
 - Life-threatening storm surge likely in some areas starting as early as Sunday evening

Expected Storm Total Rainfall



Tampa Bay Area

WEATHER FORECAST OFFICE

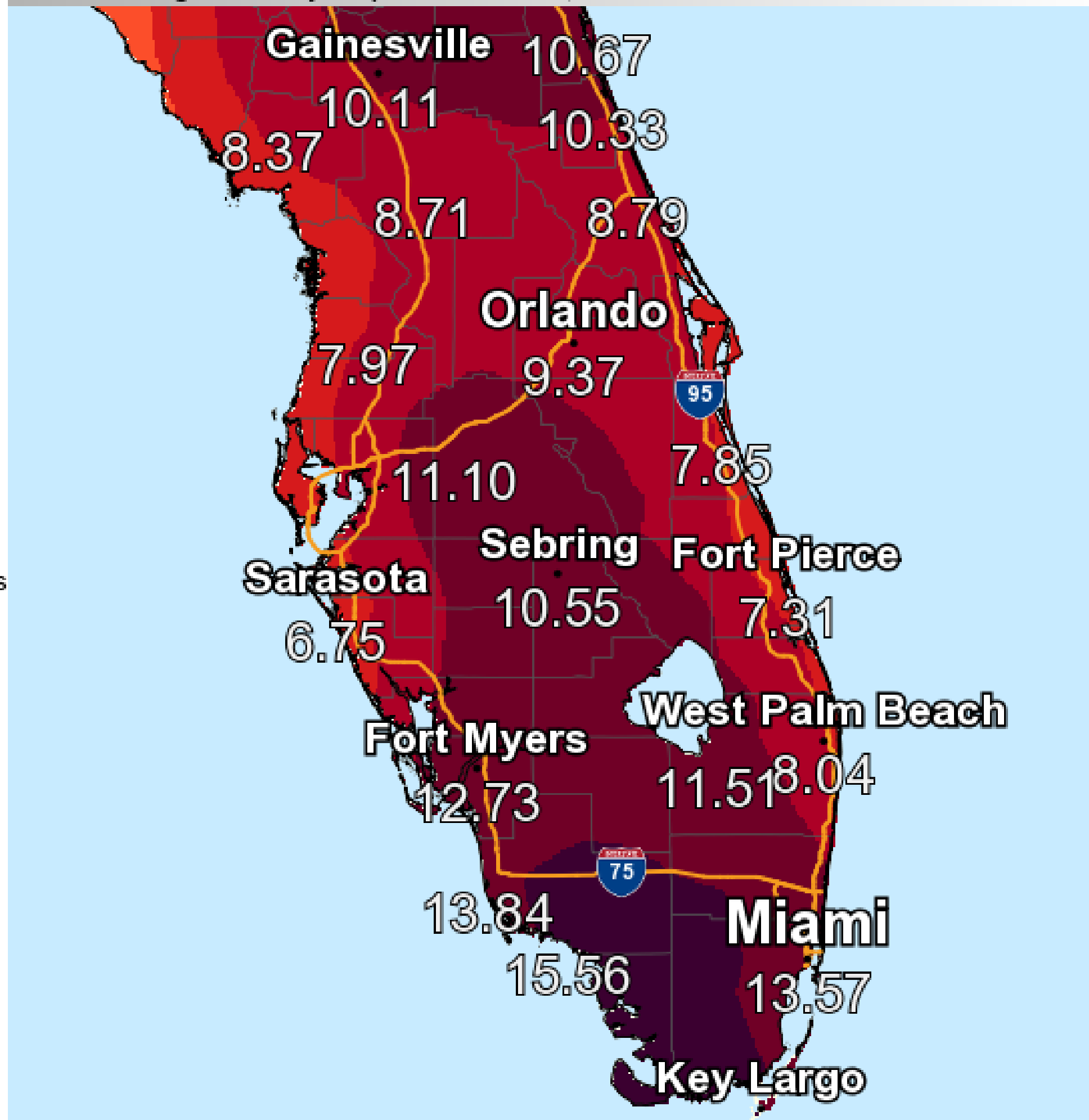
Hurricane Irma

Forecast Precipitation

National Weather Service

Valid Ending Tuesday September 12th, 2017 at 8 PM EDT

- Up to 0.1 inch
- 0.1 to 0.25 inches
- 0.25 to 0.5 inches
- 0.5 to 1.0 inches
- 1.0 to 1.5 inches
- 1.5 to 2.0 inches
- 2.0 to 3.0 inches
- 3.0 to 4.0 inches
- 4.0 to 6.0 inches
- 6.0 to 8.0 inches
- 8.0 to 10.0 inches
- 10.0 to 15.0 inches
- 15.0 to 20.0 inches
- 20.0 to 30.0 inches
- 30.0 to 40.0 inches
- Greater than 40 inches



Storm total rainfall
forecast valid through
Tuesday

Note: There will likely be
locally higher amounts

Graphic Created
September 9th, 2017
6:29 AM EDT

9/9/2017 12:25 PM



[fb.com/NWSTampaBay](https://www.facebook.com/NWSTampaBay)



[@NWSTampaBay](https://twitter.com/NWSTampaBay)



[weather.gov/tampabay](https://www.weather.gov/tampabay)



[NWS Tampa Bay Tropical Products](#)

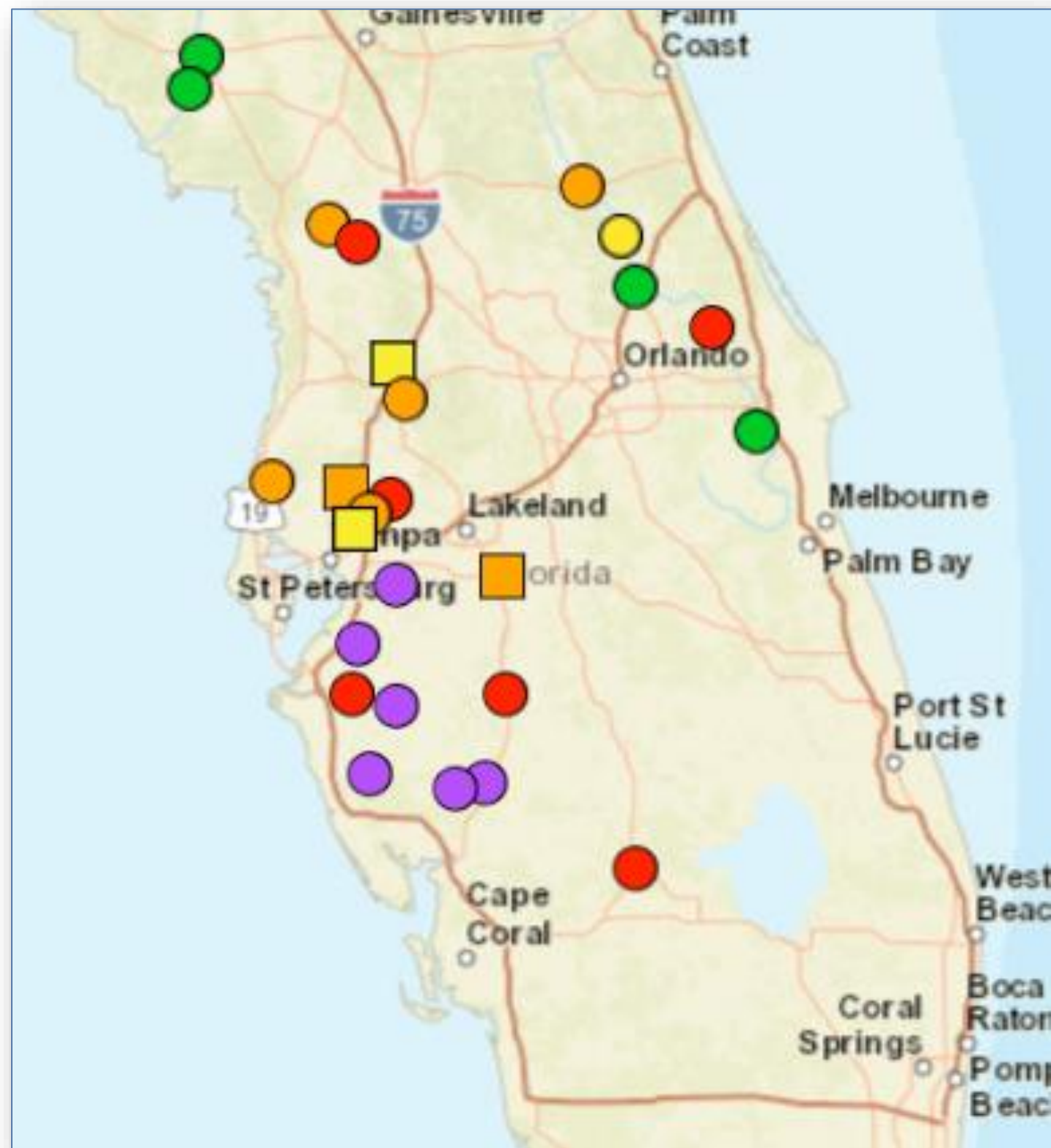
Potential for River Flooding



Tampa Bay Area

WEATHER FORECAST OFFICE

Hurricane Irma



- Currently have minor flooding along the Alafia River in Hillsborough County and the Myakka River in Sarasota County

Long Range River Flood Potential Map

- Purple dots have a greater than 30% chance of major river flooding Monday through at least Wednesday, then moderate flooding
- Red dots moderate flooding

Chance of Exceedance		
30%	Level	70%
	Action	
	Minor Flood	
	Moderate Flood	
	Major Flood	
= less than 30% chance of reaching Action level		

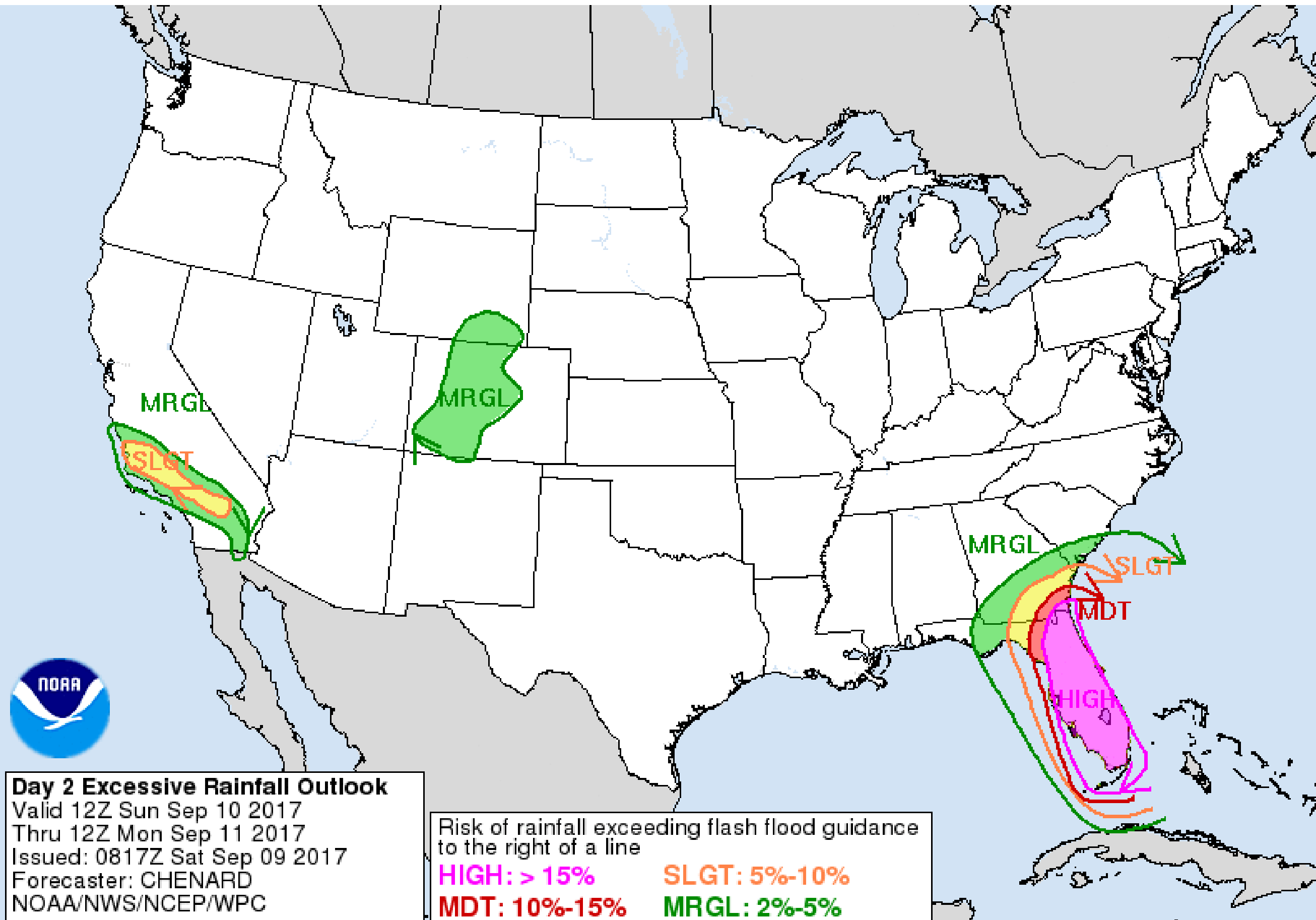
Expected Storm Total Rainfall

Hurricane Irma



Tampa Bay Area

WEATHER FORECAST OFFICE



Excessive rainfall outlook valid Sunday morning through Monday morning

- Higher risk for flash flooding as the forecast has shifted to the west
- *Flash Flood Watch is in effect through Monday morning*
- Significant urban and rural flooding possible Sunday onward
- Major river flooding possible Monday-Wednesday

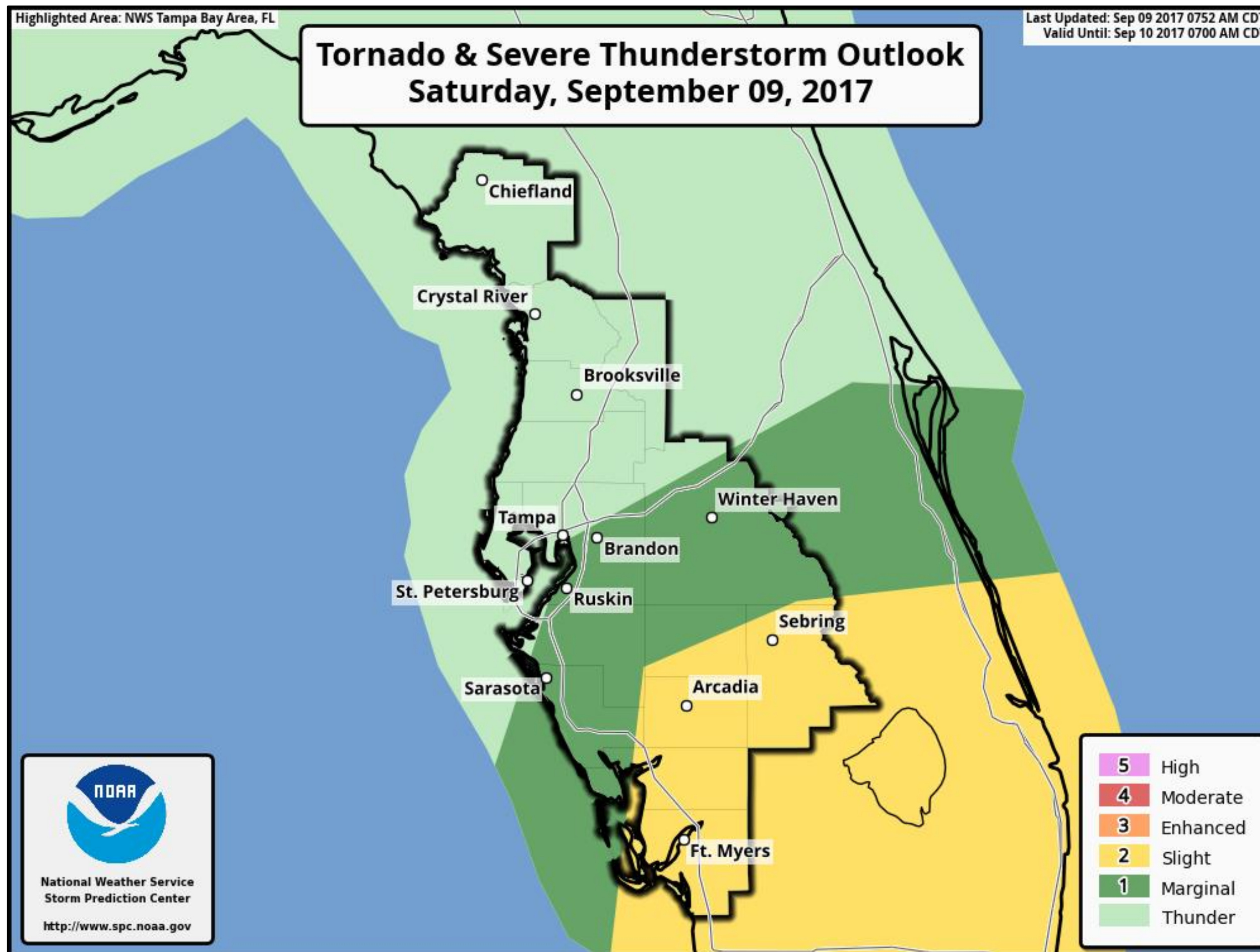
Tornado Potential

Hurricane Irma



Tampa Bay Area

WEATHER FORECAST OFFICE



- Main threat of tornadoes would be on the northeast side of Irma.
- Tornado Watch in effect for Charlotte and Lee and adjacent coastal waters through midnight tonight.

Summary

Hurricane Irma



Tampa Bay Area

WEATHER FORECAST OFFICE

- Let us know if we are missing anything in this briefing that you need
- Risk of hurricane force winds and significant storm surge has increased
- Urban and rural flooding likely Sunday and Monday
- Major river flooding possible Monday into mid week

