



# HURRICANE IRMA BRIEFING



7:00 AM EDT  
Saturday, September 9, 2017

Prepared by:  
Brian LaMarre



[fb.com/NWSTampaBay](https://fb.com/NWSTampaBay)



[@NWSTampaBay](https://twitter.com/NWSTampaBay)



[weather.gov/tampabay](https://weather.gov/tampabay)



[NWS Tampa Bay Tropical Products](#)

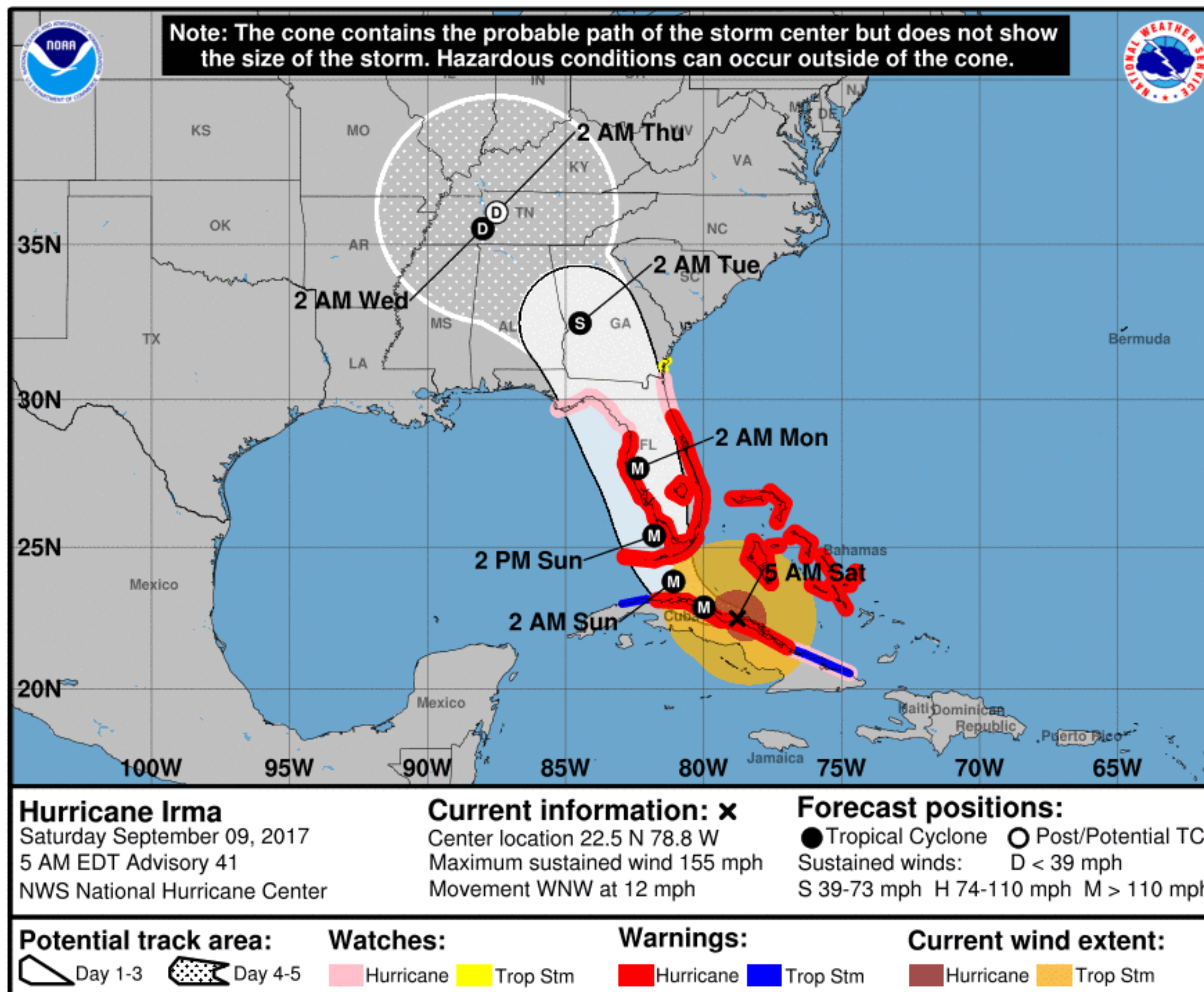
# Situation Overview



Tampa Bay Area

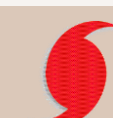
WEATHER FORECAST OFFICE

## Hurricane Irma



**NOTE:** Do not focus on the exact track. Impacts can occur well outside the area enclosed by the cone.

- Minor change to track; still expecting extreme impacts to FL Gulf Coast
- Hurricane Warning for Hernando/Sumter County southward
- Hurricane Watch for Levy/Citrus County
- Minor track and intensity uncertainty due to interaction with Cuba



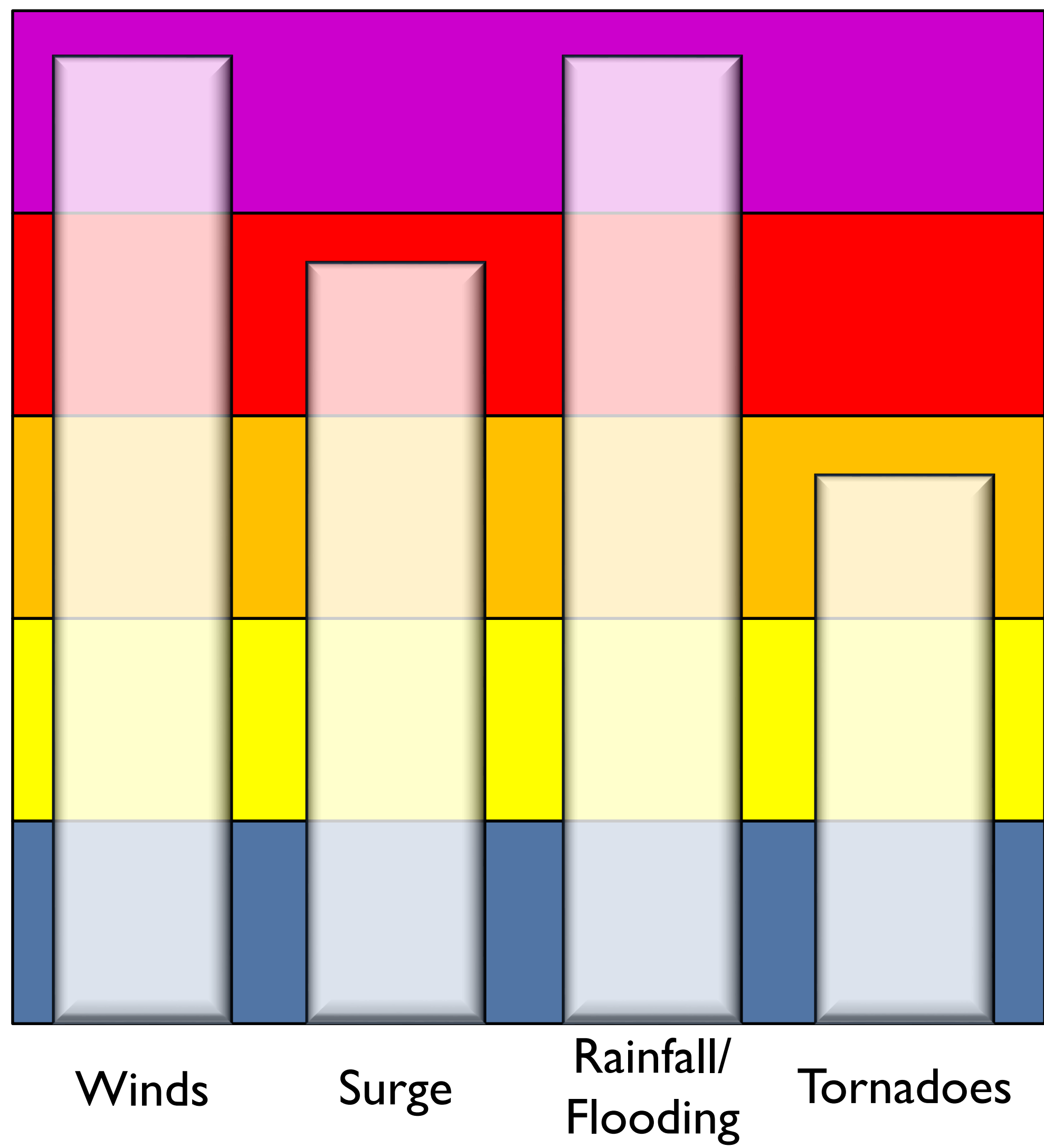
# Threat Levels



## Tampa Bay Area

WEATHER FORECAST OFFICE

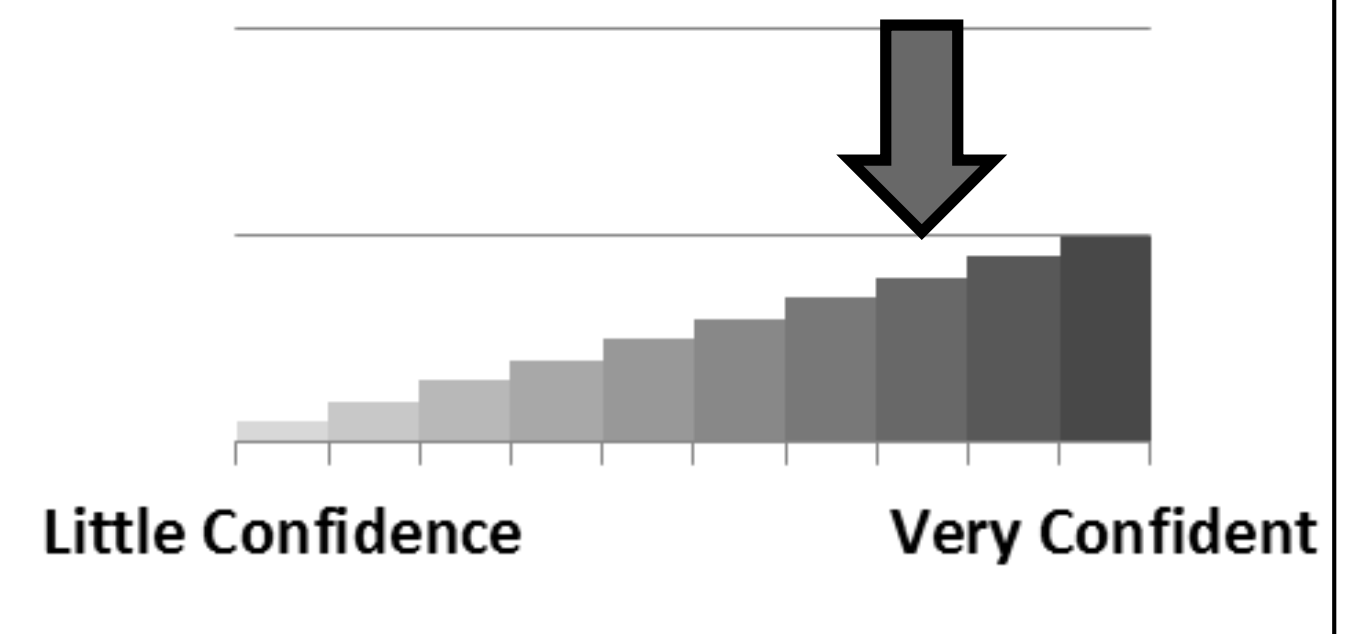
### Hurricane Irma



### Threat Level

- Extreme
- High
- Moderate
- Low
- None

### Forecast Confidence



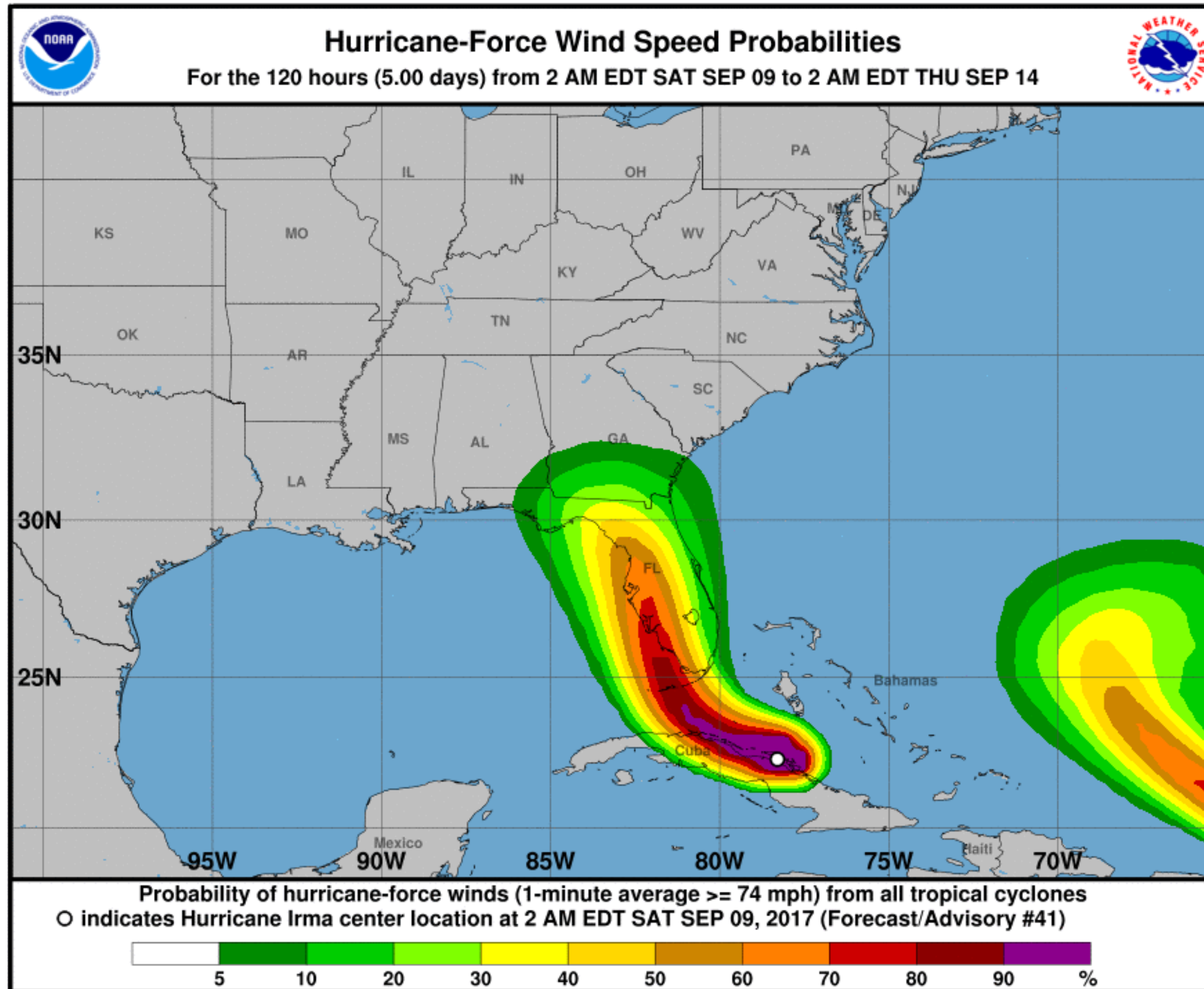
# Wind Speed Probabilities

Hurricane Irma



Tampa Bay Area

WEATHER FORECAST OFFICE



- Increased in hurricane force wind potential
- Charlotte/Lee County have a 70-80% chance of hurricane force winds
- Tampa Bay area plus central Florida have a 60-70% chance of hurricane force winds
- Nature Coast has a 50-60% chance of hurricane force winds



# Most Likely Time of Arrival



Tampa Bay Area

WEATHER FORECAST OFFICE

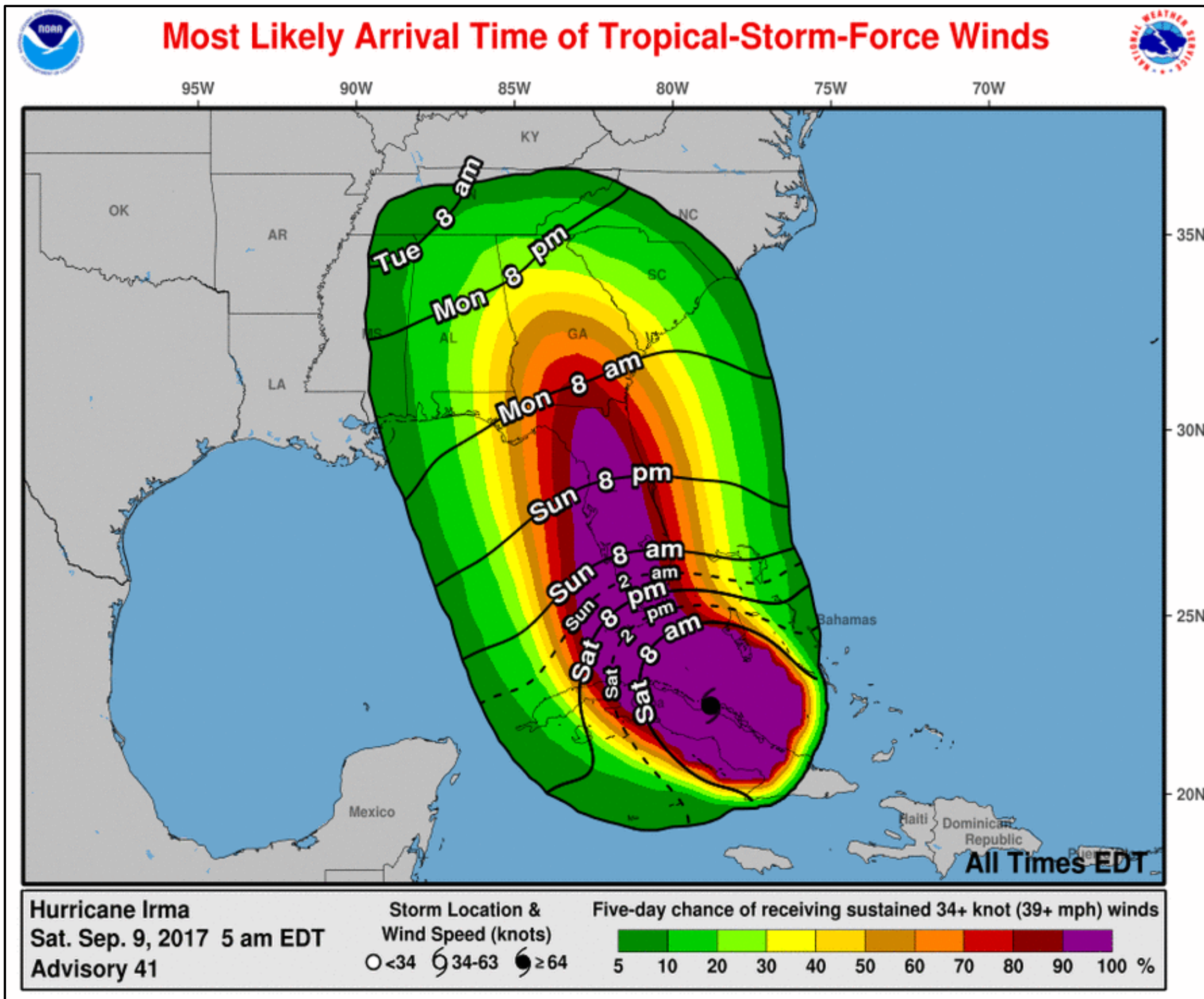
Hurricane Irma

Tropical Force winds will impact West Central and Southwest Florida Sunday

## Most Likely Time of Arrival

- Fort Myers: 6 am Sunday
- Bradenton: 10 am Sunday
- Sebring: 10 am Sunday
- St Pete/Tampa: 2 pm Sunday
- Lakeland: 2 pm Sunday
- Brooksville: 6 pm Sunday
- The Villages: 8 pm Sunday
- Chiefland: 10 pm Sunday

*However*, uncertainty in forecast means wind could arrive 12 hours earlier.



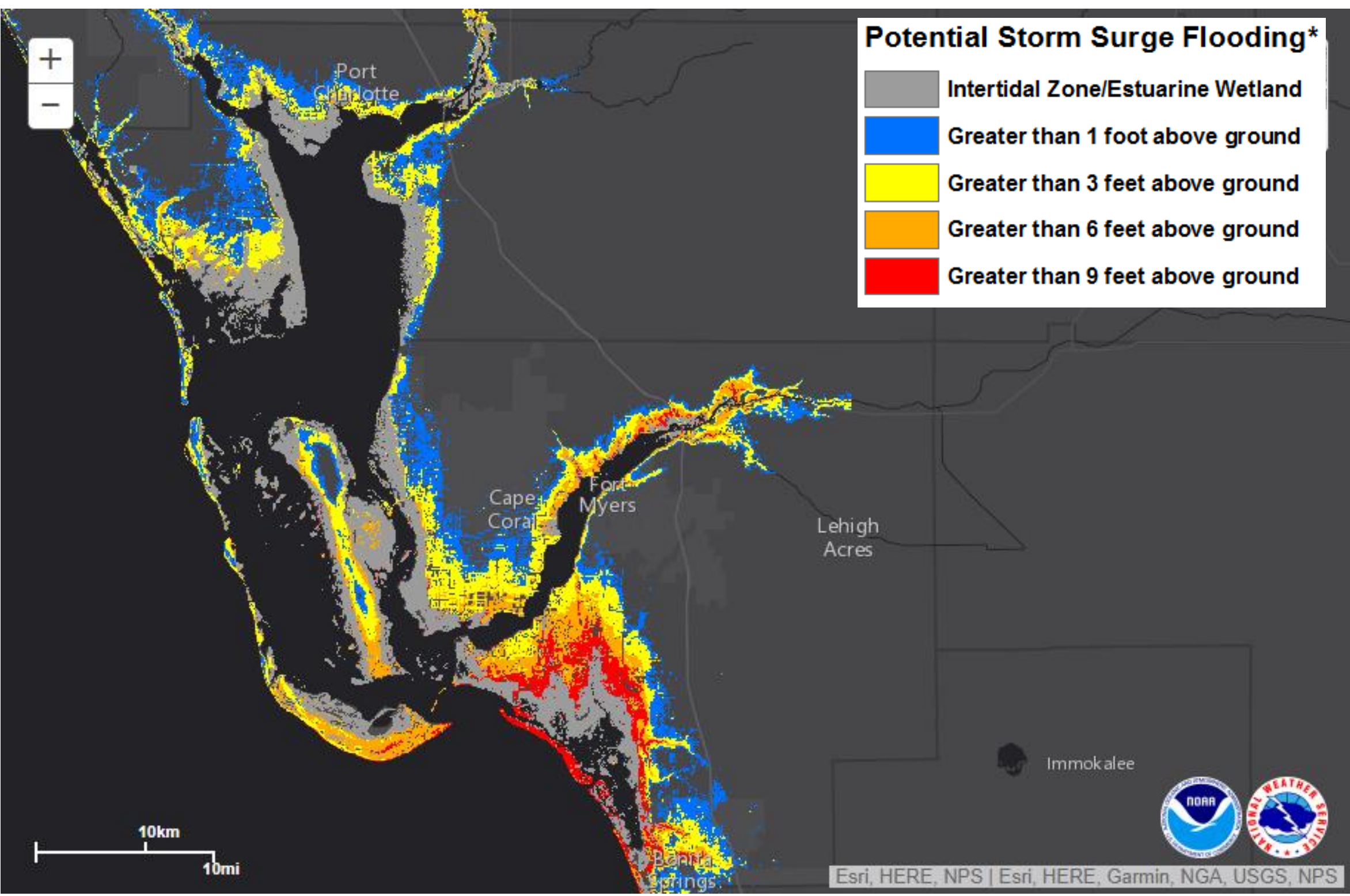
# Potential Storm Surge Flooding



Tampa Bay Area

WEATHER FORECAST OFFICE

Hurricane Irma



- Red = 9-10 feet AGL
- Orange = 6-9 feet AGL
- Yellow = 4-6 feet AGL

Timing: Storm surge inundation could begin as early as Sunday evening; greatest at Sunday night/early Monday morning high tide

**Note:** This graphic shows where storm surge inundation could occur in any one location. It depicts a reasonable worst case scenario.

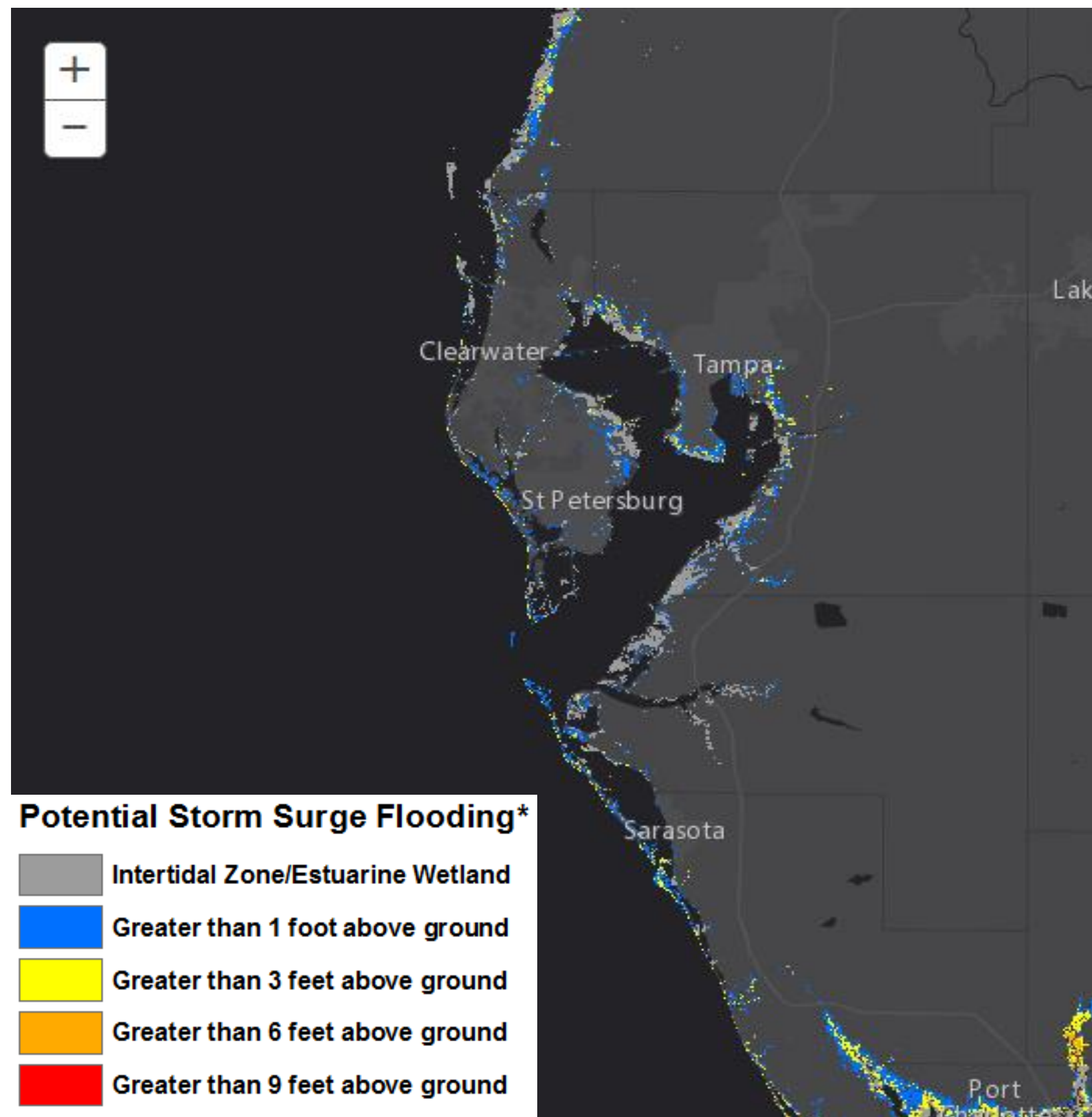
# Potential Storm Surge Flooding



Tampa Bay Area

WEATHER FORECAST OFFICE

Hurricane Irma



- Highest 3-5 feet AGL
- Timing: Storm surge inundation could begin as early as late Sunday night/early Monday morning; greatest at Monday morning high tide

**Note:** *This graphic shows where storm surge inundation could occur in any one location. It depicts a reasonable worst case scenario.*



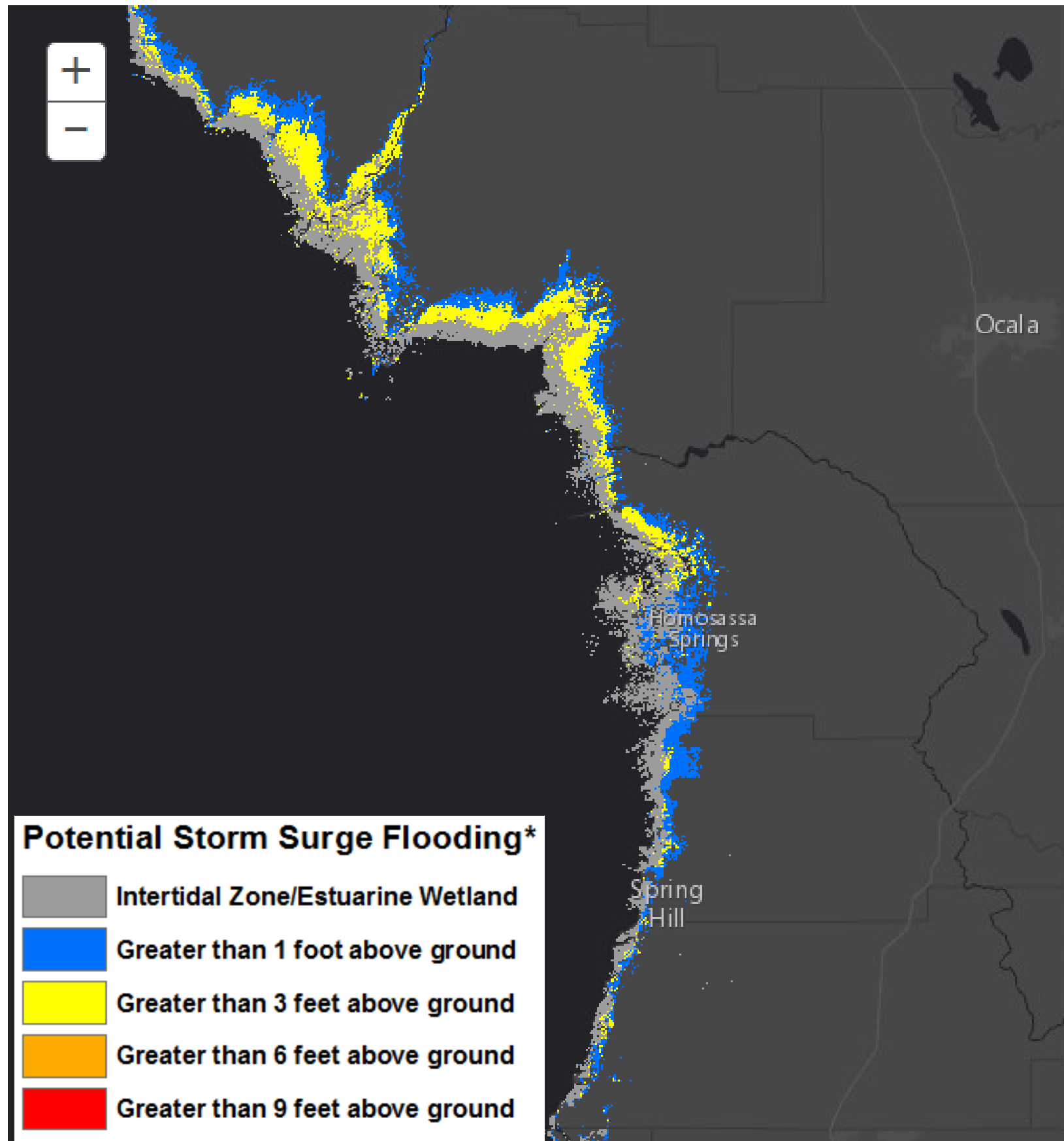
# Potential Storm Surge Flooding



Tampa Bay Area

WEATHER FORECAST OFFICE

Hurricane Irma



- Highest 4-7 feet AGL, possibly higher depending on track
- Timing: Storm surge inundation could begin as early as Monday morning; greatest at Monday afternoon high tide

**Note:** *This graphic shows where storm surge inundation could occur in any one location. It depicts a reasonable worst case scenario.*



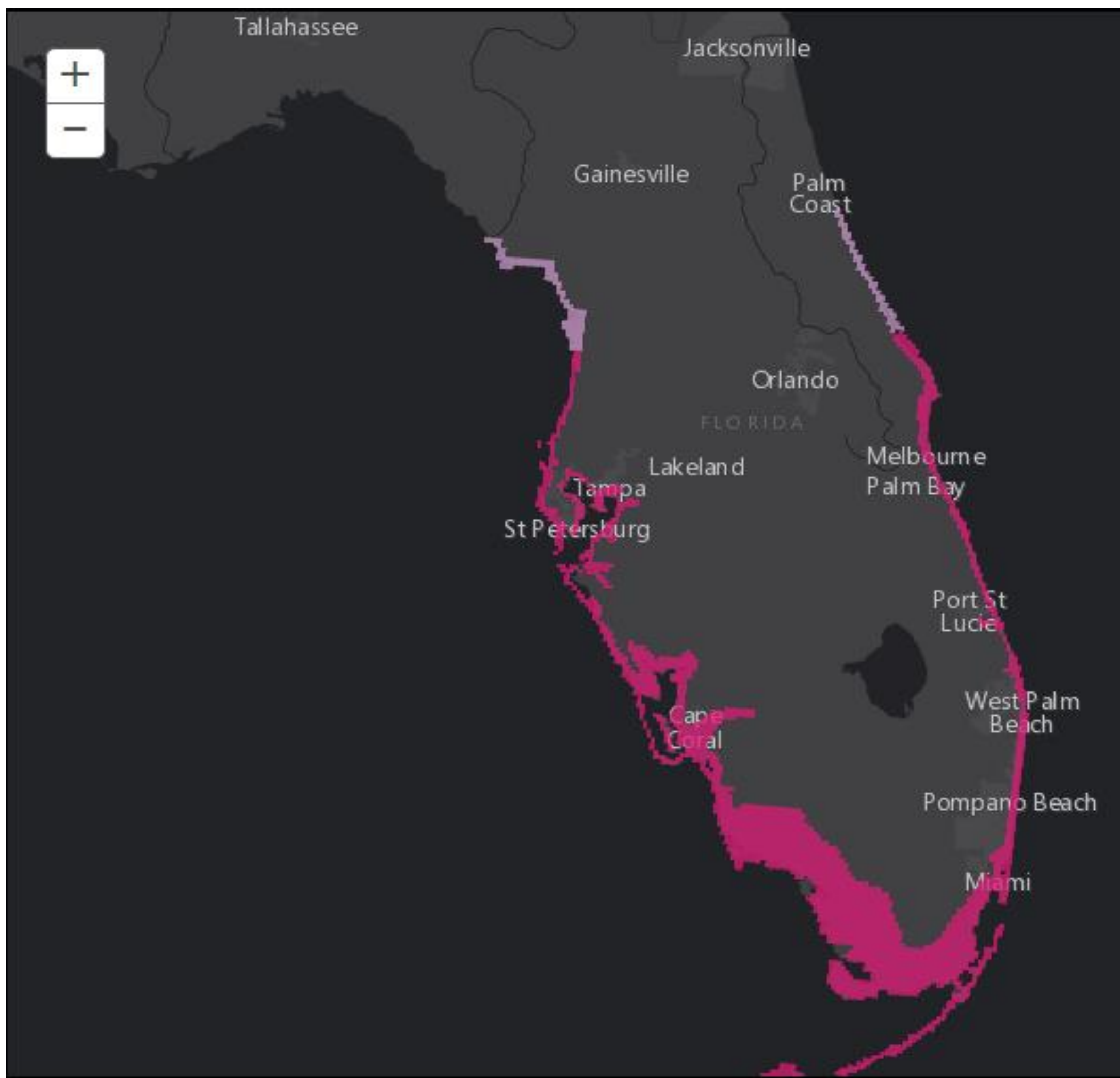


# Storm Surge Watch/Warning



Tampa Bay Area  
WEATHER FORECAST OFFICE

Hurricane Irma



- Storm Surge Warning in effect for Hernando County Southward
  - Life-threatening storm surge likely in some areas starting as early as Sunday evening
- Storm Surge Watch in effect for Levy/Citrus County



9/9/2017 6:46 AM

# Expected Storm Total Rainfall



Tampa Bay Area

WEATHER FORECAST OFFICE

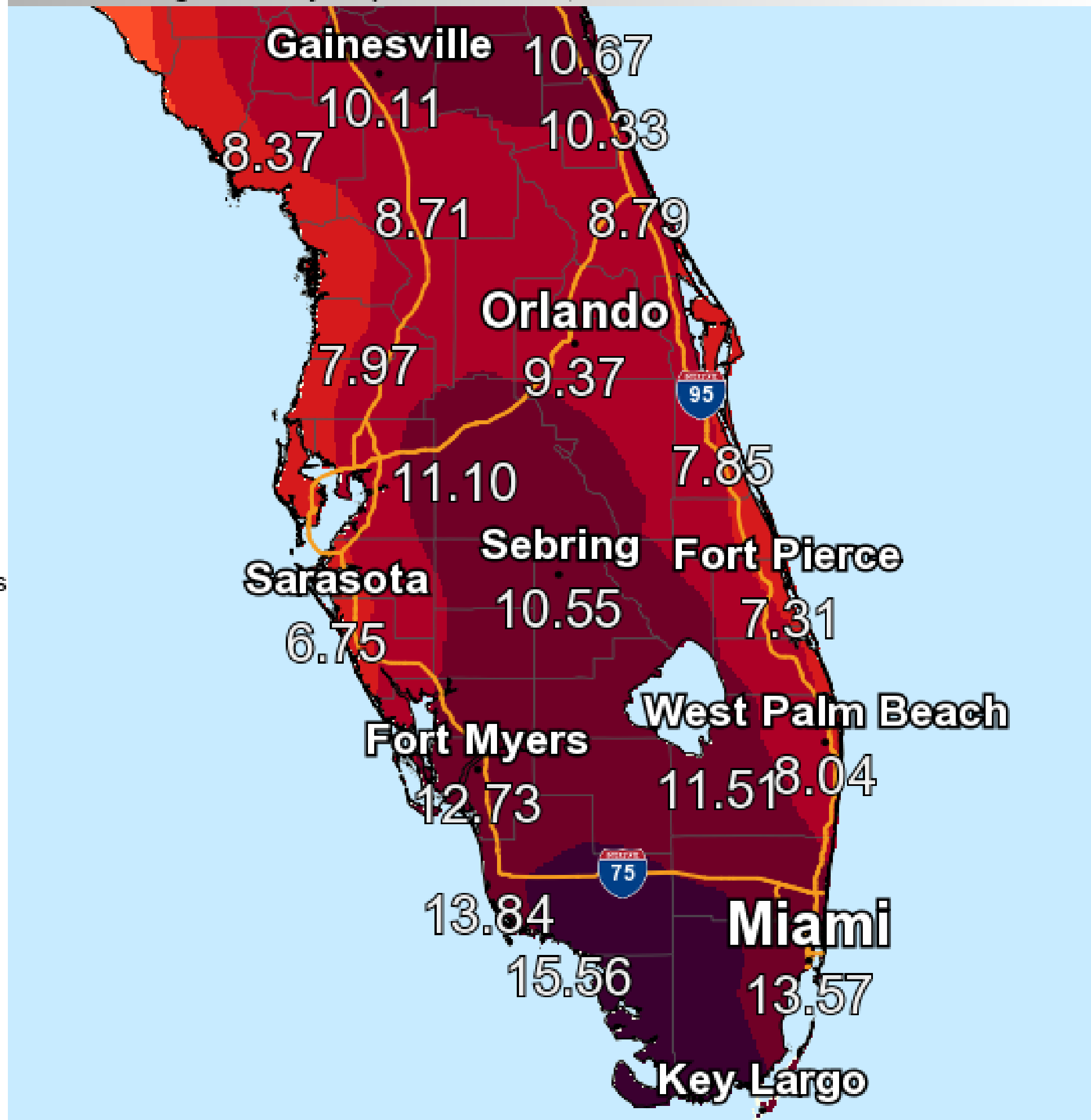
Hurricane Irma

## Forecast Precipitation

National Weather Service

Valid Ending Tuesday September 12th, 2017 at 8 PM EDT

- Up to 0.1 inch
- 0.1 to 0.25 inches
- 0.25 to 0.5 inches
- 0.5 to 1.0 inches
- 1.0 to 1.5 inches
- 1.5 to 2.0 inches
- 2.0 to 3.0 inches
- 3.0 to 4.0 inches
- 4.0 to 6.0 inches
- 6.0 to 8.0 inches
- 8.0 to 10.0 inches
- 10.0 to 15.0 inches
- 15.0 to 20.0 inches
- 20.0 to 30.0 inches
- 30.0 to 40.0 inches
- Greater than 40 inches



Storm total rainfall  
forecast valid through  
Tuesday

**Note:** There will likely be  
locally higher amounts

Graphic Created  
September 9th, 2017  
6:29 AM EDT

9/9/2017 6:46 AM



[fb.com/NWSTampaBay](https://www.facebook.com/NWSTampaBay)



[@NWSTampaBay](https://twitter.com/NWSTampaBay)



[weather.gov/tampabay](https://www.weather.gov/tampabay)



[NWS Tampa Bay Tropical Products](#)

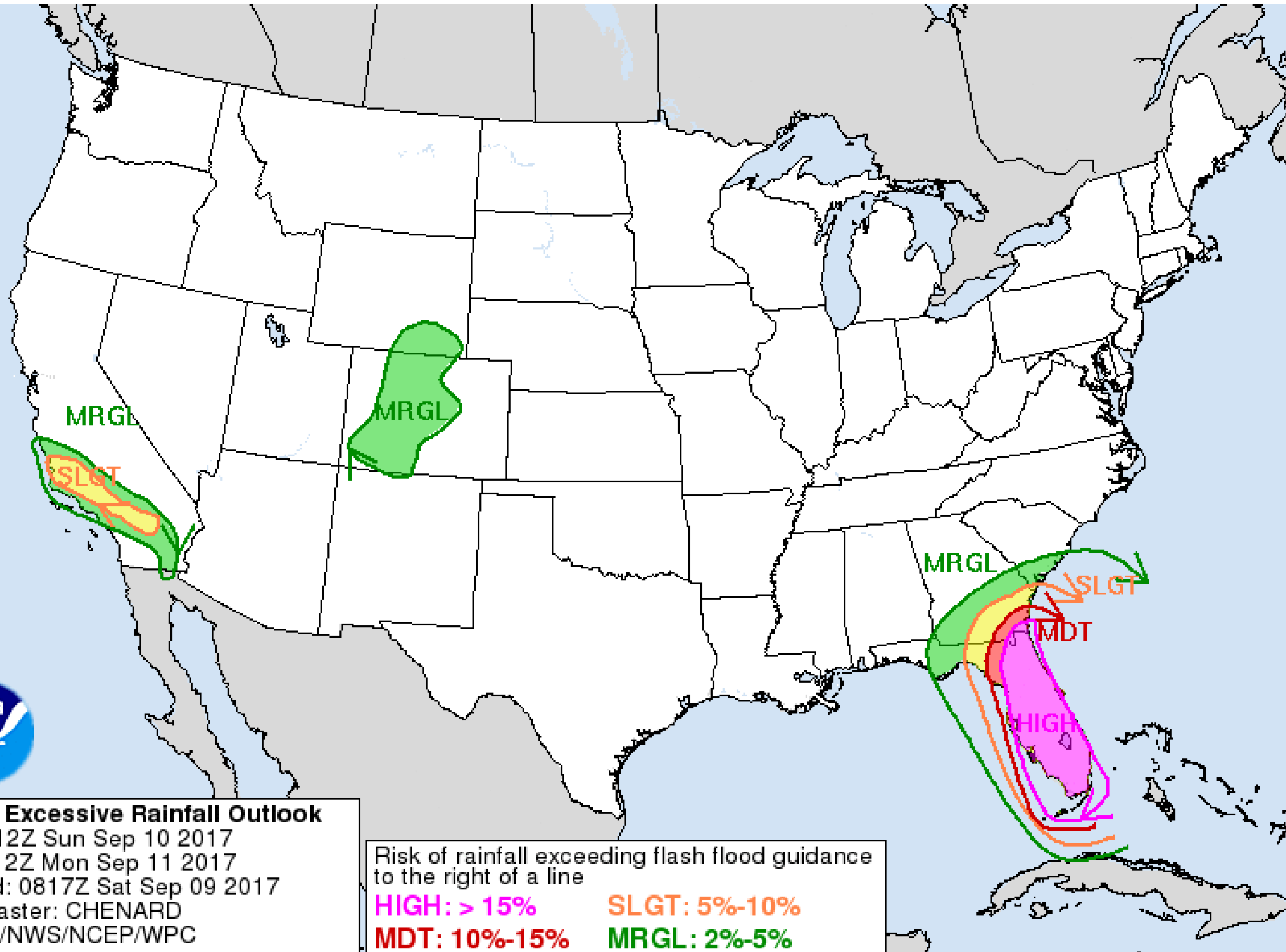
# Expected Storm Total Rainfall



Tampa Bay Area

WEATHER FORECAST OFFICE

Hurricane Irma



- Higher risk for flash flooding as the forecast has shifted to the west
- \*Flash Flood Watch is in effect through Monday morning\*
- Significant urban and rural flooding possible Sunday onward
- Major river flooding possible Monday-Wednesday

Excessive rainfall outlook valid Sunday morning through Monday morning



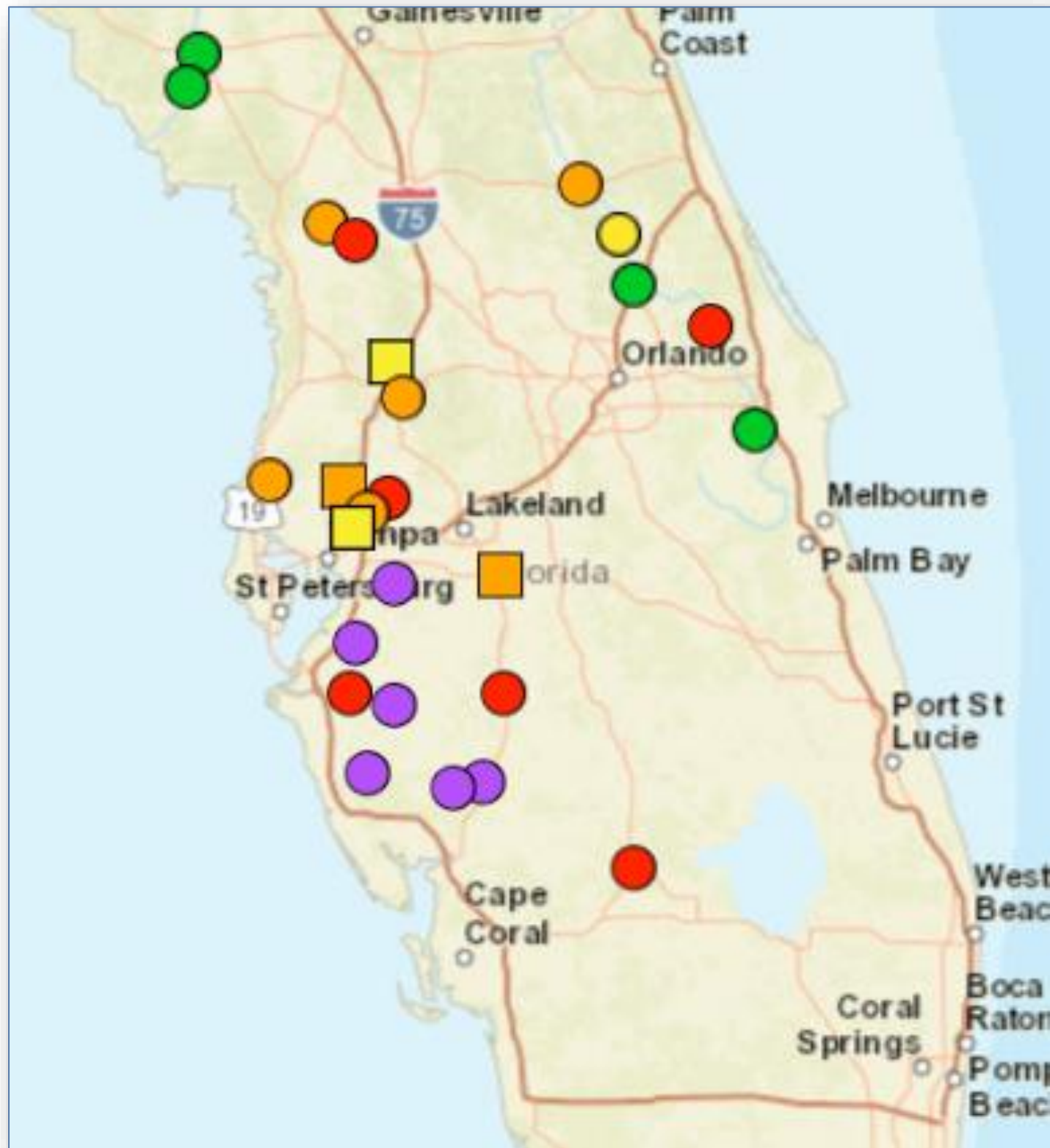
# Potential for River Flooding



Tampa Bay Area

WEATHER FORECAST OFFICE

Hurricane Irma



- Currently have minor flooding along the Alafia River in Hillsborough County and the Myakka River in Sarasota County

## Long Range River Flood Potential Map

- Purple dots have a greater than 30% chance of major river flooding Monday through at least Wednesday, then moderate flooding
- Red dots moderate flooding

Chance of Exceedance		
30%	Level	70%
	Action	
	Minor Flood	
	Moderate Flood	
	Major Flood	

= less than 30% chance of reaching Action level



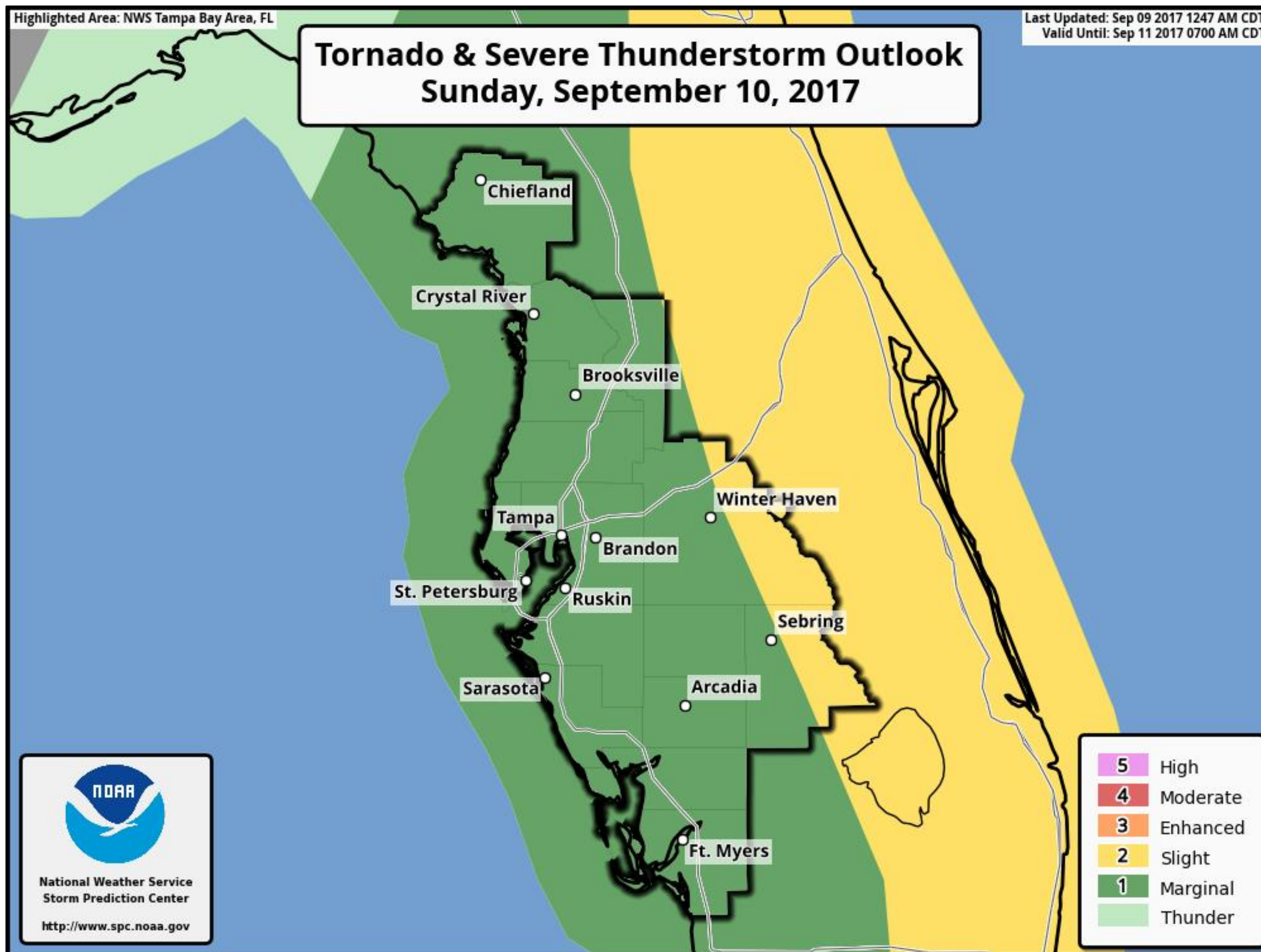
# Tornado Potential



Tampa Bay Area

WEATHER FORECAST OFFICE

Hurricane Irma



- Main threat of tornadoes would be on the northeast side of Irma





- Let us know if we are missing anything in this briefing that you need
- Risk of hurricane force winds and significant storm surge has increased
- Urban and rural flooding likely Sunday and Monday
- Major river flooding possible Monday into mid week





# HURRICANE IRMA BRIEFING

*The Next Briefing Will Be:*

*Saturday at 1:00 PM EDT*



[fb.com/NWSTampaBay](https://fb.com/NWSTampaBay)



[@NWSTampaBay](https://twitter.com/NWSTampaBay)



[weather.gov/tampabay](https://weather.gov/tampabay)



[NWS Tampa Bay Tropical Products](#)