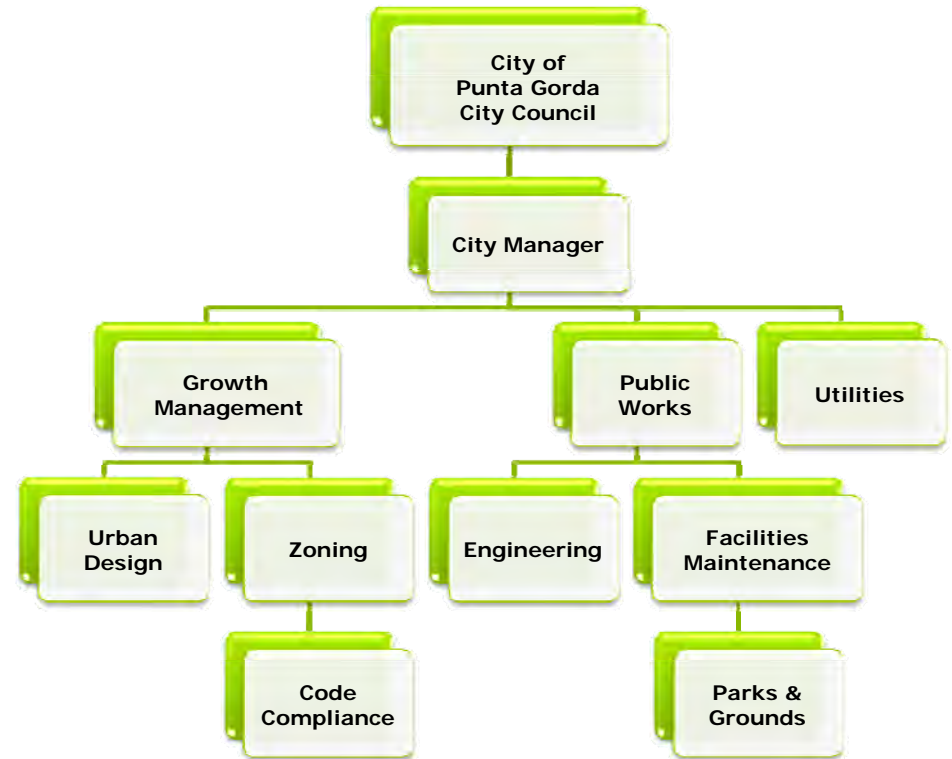




V. Organizational Structure

Within the City, park development is shared by several departments. The Urban Design Division of Growth Management provides the planning concepts for the development of City Parks through traditional town planning principles. Engineering provides the technical support of the parks development through surveying, design planning, and project management. Once designed and built the Parks and Grounds Division, under the Public Works Department, provides the maintenance and care of the developed parks. Consisting of 11 full time employees, a full time crew chief, and a department supervisor, the division is responsible for the care and maintenance of 18 City parks totaling approximately 109 acres and 14 public facilities. The division also is responsible for the U.S. 41 and other right-of-way landscaping maintenance, additional mowing areas, 350 cul de sac islands, maintenance of all street trees and irrigation systems, and installation of holiday decorating and planting.



Growth Management

Urban Design

Urban Design Division plans communities using traditional town planning principles which promote the high quality of life our residents have come to expect.

Expectations include:

- development of an interconnected park system
- preservation of Punta Gorda's essence as a small town
- development design to include walkability, sustainability, and enhancement of the life of the community
- seeing the community as a whole
- implementation of strategies which improve or create connectivity between all residents and visitors to neighborhoods, business districts and their relationship between streets, paths and very importantly, parks.

Public Works

Parks & Ground

The Parks and Grounds Maintenance Division is made up of 11 full time employees & a full time Crew Chief who are responsible for the care and maintenance of the City's Parks System.

Responsibilities include:

- maintenance of City parks, municipal grounds, downtown streetscape, street trees, playgrounds, tennis courts, City and community entrance features and medians. irrigation design, installation and maintenance,
- herbicide spraying,
- fertilizing,
- cul de sac island plantings
- other related tasks.

Engineering

Engineering is a service-oriented division that provides technical support and services to City departments.

Responsibilities include:

- performs surveys
- designs plans for City projects
- project management
- inspection duties on Capital Improvement Projects (CIP), and department projects