

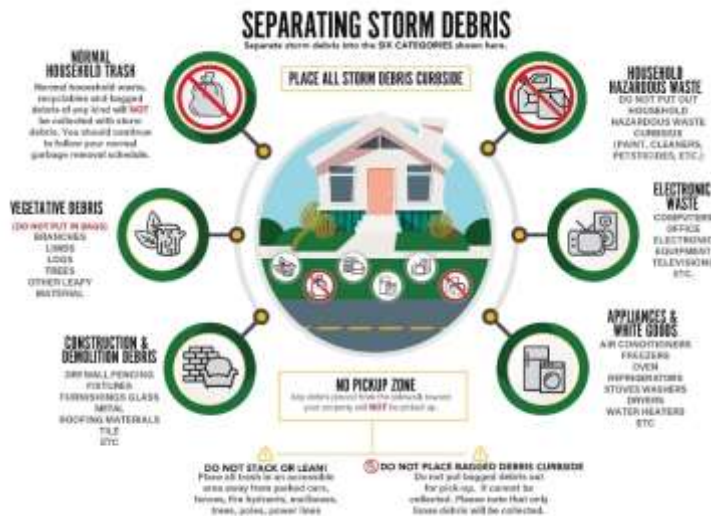


# Hurricane Milton October 11, 2024

## City Manager

### • Hurricane Milton Updates

- A curfew is in place from 12 a.m. until 6 a.m. to keep streets secure during initial period after the hurricane while power is out. <https://www.ci.punta-gorda.fl.us/home/showpublisheddocument/15920>
- How high did the water get? The working estimate in the City limits is about a foot higher than Helene. Where we have a sensor at the Shell Creek dam indicated (measured at above zero ground elevation) 7.1 feet for Helene and 9.12 for Milton with reverse flow pushing in. It will take time before an official depth is available.
- For power restoration information visit FPL.com.
- Trash pickup and recycling pick up are back on their regular schedule. Yard waste will not be picked up at this time.



- There are no boil water notices in effect. We do ask that people limit water use wherever possible.

- Following a hurricane, stagnant water can pose significant health risks by harboring harmful pathogens, which may lead to serious waterborne disease. This standing water can also conceal dangerous hazards, including storm debris and downed power lines, creating a serious risk of electrocution for those who venture too close. It's crucial to exercise caution and prioritize your safety. Always remember: "Turn Around, Don't Drown!" Stay vigilant and avoid flooded areas to protect yourself and your loved ones from potential dangers.
- City offices will be reopening on October 14. Due to flooding and standing water Hounds on Henry remains closed until further notice.
- Gilchrist Park restrooms are currently closed due to flooding. We are working on a solution to reopen the restrooms soon.
- Ponce De Leon Park is currently closed to all visitors due to hurricane damage until further notice.
- Hounds on Henry remains closed.
- City Council will meet at 9 a.m. on October 16, location will be announced as soon as a suitable location with power is determined.
- Senator Rick Scott visited Punta Gorda yesterday to meet with members of the police and fire departments as part of his effort to assess the damage caused by Hurricane Milton. During his visit, he had the opportunity to see the Fat Truck in action—a high-water rescue vehicle generously provided by Supertrak, which played a critical role in the city's emergency response efforts.
- The Administrator of FEMA Deanne Criswell met with Punta Gorda staff to view hurricane damage, discuss needs, grant opportunities and assistance with FEMA programs.



### **Hurricane Recovery Information**

- Residents affected by Hurricane Helene may be eligible for FEMA assistance. Fill out an application at <https://www.fema.gov/assistance/individual>.
- Clean up help is available through Crisis Cleanup (844) 965-1386.
- If you need help connecting with your loved ones after Hurricane Milton, the American Red Cross can assist you. The Reunification Plan tools can help if assistance is needed locating a missing friend or relative because of a current disaster. Call 1-800 RED CROSS (1-800-733-2767) and provide as much detail as you can to assist us in potentially locating your missing loved one.
- Currently, nearly all decorative streetlights in the downtown area and historic district, as well as lighting in Gilchrist Park and Laishley Park, are inoperable. Additionally, pathway lighting along the Harbor Walk and Linear Trail is also out of service. Officers will be heavily patrolling these areas during nighttime hours to enhance safety.

- Charlotte County has opened three distribution centers today with water, tarps and MREs. The points of distribution are open 8 a.m. to 6 p.m. or while supplies last at the following locations:
  - Port Charlotte Town Center, 1441 Tamiami Trail, Port Charlotte in Macy's parking lot
  - Tringali Park Community Center, 3460 N Access Road, Englewood
  - Parking lot of the former Muscle Car City Museum, 10175 Tamiami Trail, Punta Gorda
- Charlotte County launched Info Hubs to help residents get information about available resources after the storms. An Info Hubs is available at South County Regional Park Recreation Center 670 Cooper St., Punta Gorda, FL 33950.