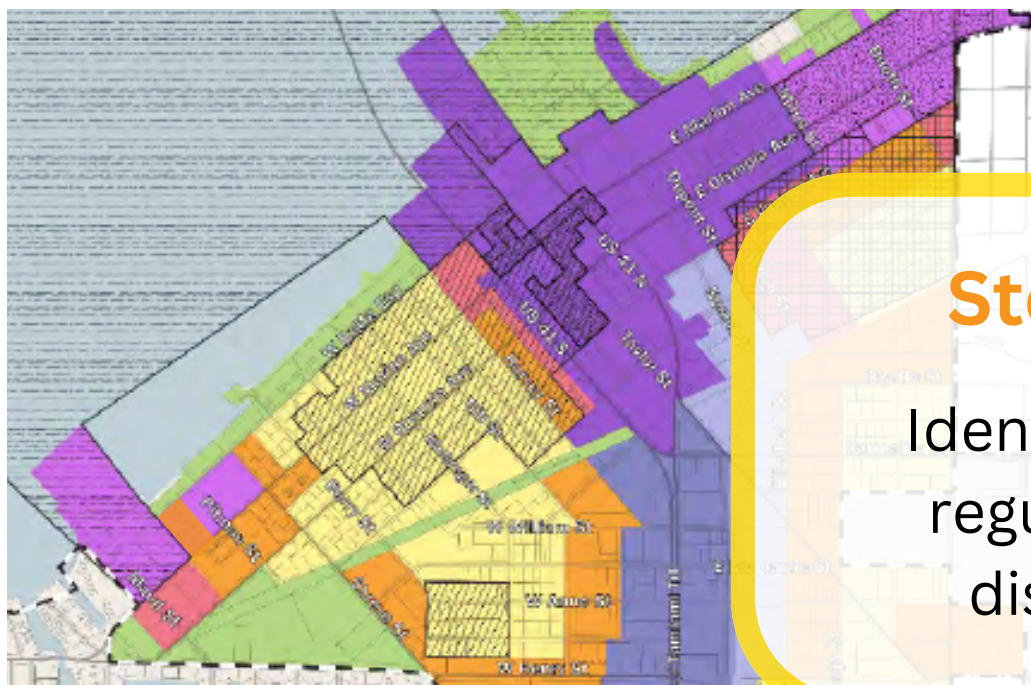


A Guide to Building Heights in Punta Gorda



Step 1:

Identify the regulating district

Step 2:

Identify the Land Development Regulations for that regulating district



Step 3:

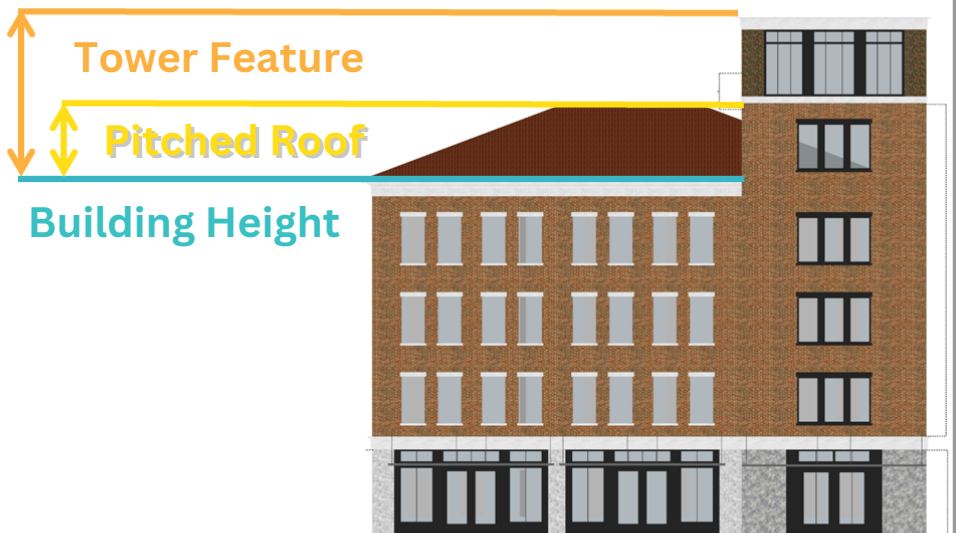
Apply building height measurement



The zero-foot height measurement is taken from Design Flood Elevation (Base Flood Elevation [BFE] plus required freeboard) in accordance with the Florida Building Code. Areas below BFE are limited to storage, parking, and access.

Step 4:

Apply possible allowances



Architectural features constitute height allowances, which are parapet walls (10 feet additional allowance), pitched roof forms (12 feet additional allowance), rooftop amenities (10 feet additional allowance with conditions), and a tower feature (20 feet additional allowance with conditions). The maximum allowance to overall building height cannot exceed 20 feet.