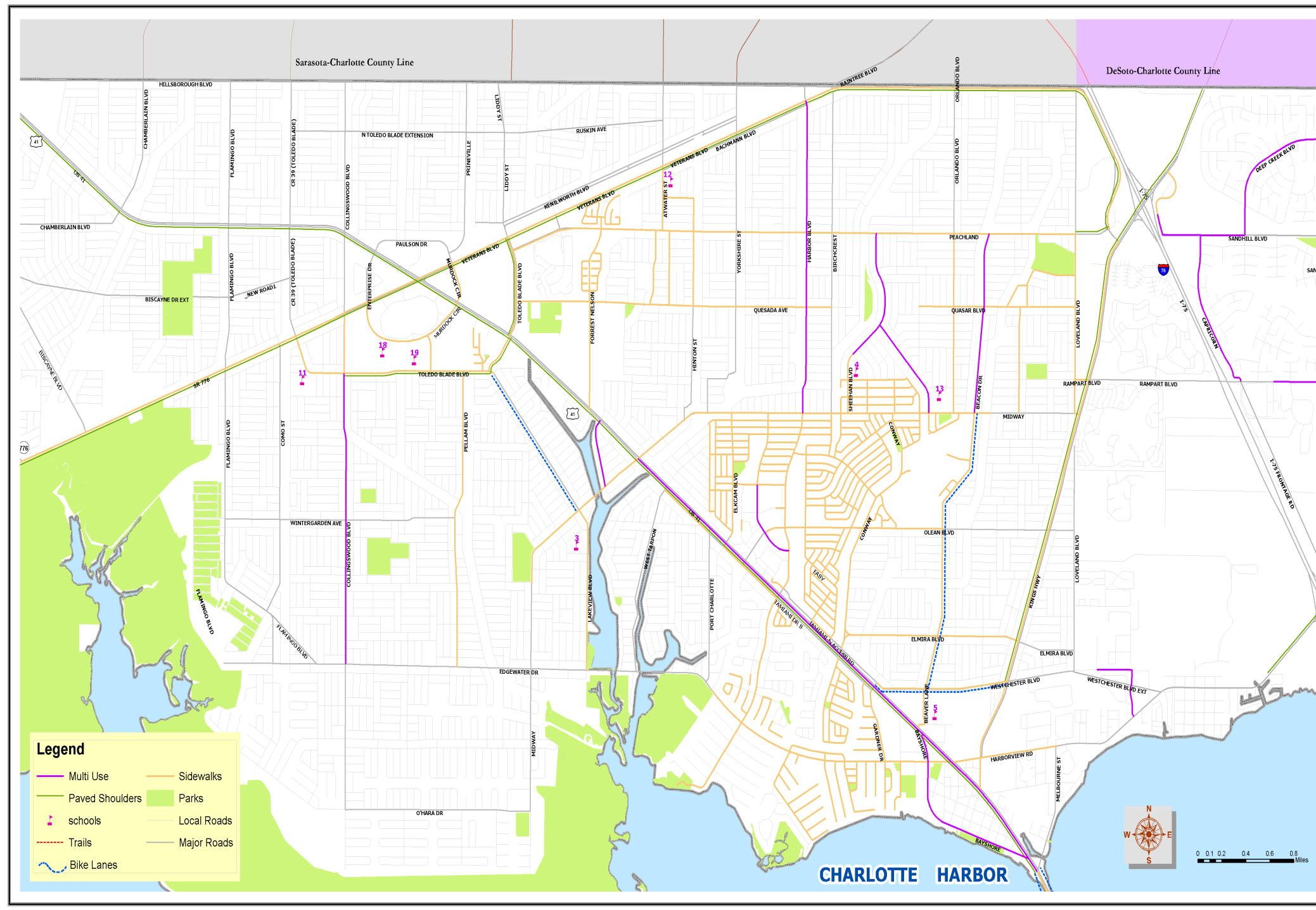


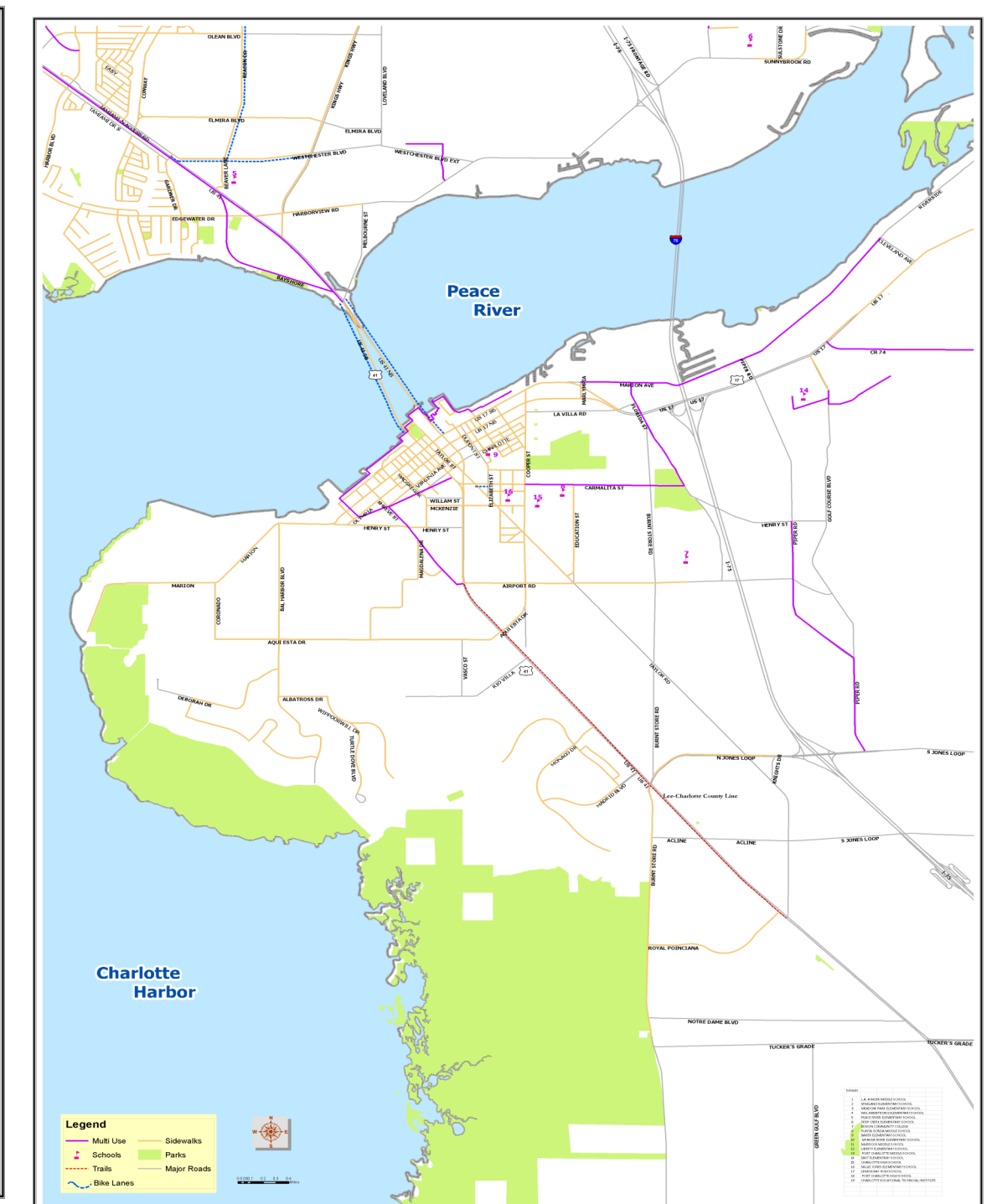
CHARLOTTE COUNTY-PUNTA GORDA MPO BICYCLE & PEDESTRIAN FACILITIES MAP



WEST COUNTY BICYCLE & PEDESTRIAN FACILITIES MAP



MID COUNTY BICYCLE & PEDESTRIAN FACILITIES MAP



SOUTH COUNTY BICYCLE & PEDESTRIAN FACILITIES MAP

ALWAYS WEAR A HELMET

Wearing a Helmet is the first step to prevent the impacts of a crash and an injury.



A bicycle rider or passenger under 16 years of age **MUST** wear a bicycle helmet that is properly fitted, fastened securely, and meets a nationally recognized standard.

Bicycle helmets, properly worn, have been found very effective at reducing the incidence and severity of head, brain, and upper facial injury. (Head injuries account for about one third of the hospital emergency room visits of injured cyclists.) Adults are strongly encouraged to wear a bicycle helmet.



CHARLOTTE COUNTY — PUNTA GORDA MPO

THE CHARLOTTE COUNTY - PUNTA GORDA METROPOLITAN PLANNING ORGANIZATION (MPO) was created in July of 1992. The MPO was established to provide a forum for transportation planning services, coordinate intergovernmental needs and goals, and facilitate public involvement.

The MPO BOARD is a governing body with the authority to develop and adopt transportation plans, programs, and policies. The MPO BOARD consists of three Charlotte County commissioners, one City of Punta Gorda elected official, one Charlotte County Airport Authority commissioner and one non-voting member from the Florida Department of Transportation (FDOT).

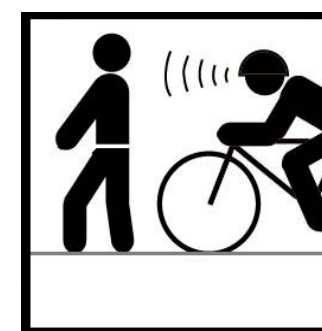
MPO BOARD MEETINGS are regularly held the second Monday in the months of February, May, August, October, and December.



WWW.CCMPO.COM

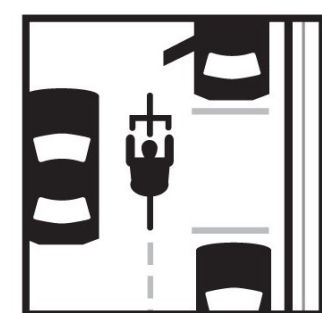
CHARLOTTE COUNTY - PUNTA GORDA MPO BICYCLE - PEDESTRIAN MAP

2014



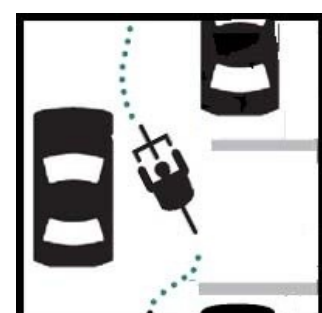
Ride Slowly On Sidewalks

On sidewalks remember pedestrians have the right-of-way. You must give them an audible warning when you pass (voice, bell or horn). Yield to traffic when entering roadways.



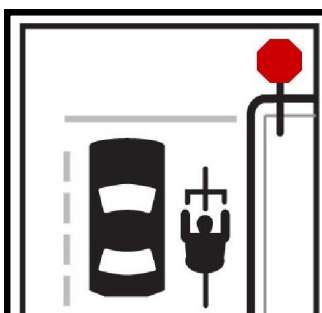
Watch for Opening Car Doors

Whenever possible ride about a car door's width away from parked cars



Never Weave Between Cars

Ride in a straight line and avoid weaving between parked cars. Motorists may not see you when you reenter traffic flow.



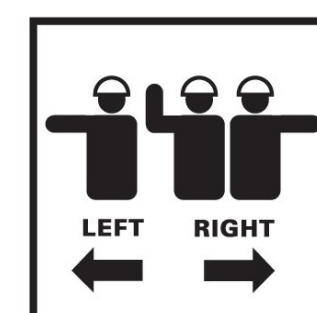
Obey Traffic Signs Signals and laws

Bicyclists must obey all the rules that apply to the driver of a motor vehicle if they are to be taken seriously by motorists. You must travel in the same direction as traffic while on the roadway



Use Lights at Night

The law requires a white headlight (visible for at least 500 feet ahead), with a red rear reflector and tail light (visible 600 feet from behind).



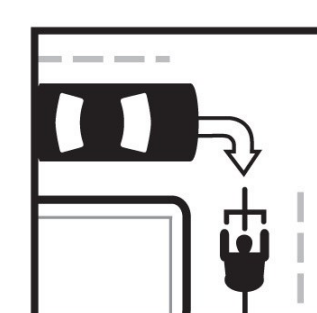
Use Hand Signals

Hand signals tell motorists and pedestrians what you intend to do. Signal as a matter of law, of courtesy and self protection.



It's the Law

A bicycle rider or passenger who is under 16 years of age must wear a bicycle helmet that is properly fitted and is fastened securely upon the head by the strap.



Never Ride Against Traffic

Motorist do not look for bicyclists riding on the wrong side of the road. Ride with traffic to avoid potential accidents.

SAFETY TIPS FOR PEDESTRIANS

WATCH YOUR WALK WAYS

Walk on sidewalks and in crosswalks whenever possible. It is important to pay attention to walk signals and keep a safe distance when standing on street corners.

KNOW YOUR NO-ZONES

Be careful of the blind spots, or No-Zones, around cars, trucks, and buses when walking near or around them.

STOPPING DISTANCES

Use caution when crossing intersections and streets. You may think vehicles will stop for you, but they may not see you or even be able to stop.

MAKE YOURSELF VISIBLE

Wear bright or reflective clothing, especially when walking at night. Dressing to be seen will make it safer for you and drivers.

