



CITY OF PUNTA GORDA  
SOLID WASTE DIVISION



GUIDE TO RESIDENTIAL  
SOLID WASTE, YARDWASTE AND  
RECYCLING COLLECTION

Revised August, 2010



This guide provides information about the City of Punta Gorda Solid Waste programs & services. We hope you will take the time to read this information and abide by the guidelines set by the City. *There have been some changes made increasing the types of recyclables collected and the use of yardwaste bags.* If you have any questions regarding any of this information, please contact the **Public Works Department at 575-5050** between 8 a.m. – 4:30 p.m. or at our website: [www.ci.punta-gorda.fl.us](http://www.ci.punta-gorda.fl.us). You'll find us under the Public Works Dept.

Please remember that this information applies to residents inside the City limits of Punta Gorda. Residents that live in unincorporated area of Charlotte County should contact Waste Management at 629-1106, or Charlotte County Environmental Services at 764-4360.

Citizens who are not provided curbside service, such as condominium residents should check with their complex manager regarding collections schedules for refuse, yardwaste and recycling.

## DEFINITIONS



Garbage/Trash/ Refuse are the accumulation of food wastes, paper, packaging, containers, sweepings, etc., which are usual to housekeeping and to the operation of stores, offices and other business places. At times, you may also find trash & garbage referred to as MSW (Municipal Solid Waste).





Yardwaste is the accumulation of lawn, grass & shrubbery cuttings, leaf rakings, palm fronds, tree branches or limbs, tree trunks, parts of bushes or shrubs and other vegetation generated by the nature of normal yard maintenance or trimming.




Garbage can/Yardwaste container - a metallic or plastic container which has a removable metallic or plastic lid which has two (2) handles with which it may be lifted, and which has a capacity of no more than thirty-two (32) gallons, and weigh no more than 35 pounds. Residents may also use paper bags that are designated for yardwaste collection.

## DEFINITIONS

Recyclables now means newspapers, magazines, office paper, brown paper bags, paperboard cartons, dairy and juice containers, junk mail, phone books, flattened cardboard, plastic bottles and plastic containers number 1-7, glass bottles and jars, aluminum cans, aluminum foil and pie tins, and tin or steel cans.

White goods means discarded  washers,  water heaters, freezers, refrigerators, ranges, dryers, small air conditioning units and other similar domestic appliances generated by the use of the residential unit

Construction and demolition debris  is waste including but not limited to, steel, glass, brick, concrete or clay or asphalt roofing material, pipe, gypsum wallboard and lumber, resulting from the construction or destruction of a structure, and includes rocks, soils, tree remains and vegetative matter which results from land clearing or land development operations for a construction project.



**REFUSE  
COLLECTION INFORMATION  
(HOUSEHOLD TRASH)**

- 1. Household trash is collected twice per week. All trash should be out to the curb by 6 a.m. on the day of collection to guarantee pickup. Materials placed out later than 6 a.m. will not be picked up until your next collection day.**
- 2. Containers shall not exceed 32 gallons in size or 35 pounds in weight. The cans shall be made of metal or plastic, with sturdy handles and tight fitting lids.**
- 3. Trash should be bagged inside the can to prevent any wind blown litter during the collection process, or any leakage from wet garbage. It can also help keep animals out of your garbage.**
- 4. Multi-family units utilizing dumpster collections should keep the dumpster lids closed to prevent bags being ripped open by birds or other animals.**
- 5. Please keep any toys, bikes, grills, etc., away from your trash to avoid any collection mistakes.**
- 6. Construction material will NOT be collected by City crews. Disposal of the material should be arranged by the contractor or the homeowner doing the work.**



## YARDWASTE COLLECTION PALM FRONDS, BRANCHES AND TRIMMINGS

1. Yardwaste is collected once per week, and must be out to the curb by 6 a.m.
2. Palm fronds, limbs, etc. shall not exceed 4" in diameter or 4' in length. These items must be tied and bundled for collection; bundles shall weigh no more than 35 pounds.
3. Shrubbery, grass clippings and leaves must be placed at the curb in containers. Containers shall not exceed 32 gallons in size or 35 pounds in weight and must have handles.
4. **Biodegradable paper bags designated for yardwaste collection are allowed. However, no plastic bags will be collected.** The yardwaste is made into mulch and the plastic products could contaminate the mulch.
5. Do not mix yard waste with regular household trash.

If you have a large quantity of yardwaste, branches, stumps, etc., [please contact the Public Works office at 575-5050 to schedule collection](#). There may be a charge for excessive amounts, excessive numbers of special pickups or for special pickups arranged to avoid proper containerizing or bundling. Whole tree removal is not part of your regular service. You must contact a tree removal company.

6. **SAFETY TIP!** Do not place yard waste piles near or under power lines, telephone boxes, mail boxes, etc. This could impede access to the yard waste materials.



Christmas trees (minus lights and decorations) can be placed at the curb for collection on your regular pickup day.

**PLEASE MAKE SURE YOU DO TRIMMING AROUND YOUR HOME WELL BEFORE ANY STORM WARNINGS OR WATCHES ARE ISSUED. DURING THESE TIMES, CITY EMPLOYEES MAY BE ASSIGNED TO OTHER JOB DUTIES AND/OR PREPARING FOR THEIR OWN HOMES AND FAMILIES. TO PLACE YARDWASTE OUT AT THIS TIME COULD BLOCK STORM DRAINS AND CAUSE FLOODING.**



## CURBSIDE RECYCLING COLLECTION

The recycling is collected once per week. Waste Management has changed to "single stream" collection. This means all recyclable materials may be combined in one bin. You may also use your second bin if you need it for more recyclables.



Please remember that **additional** items have been added to the "recyclables" list. Materials now collected are: newspapers, magazines, office paper, brown paper bags, paperboard cartons, dairy and juice containers, junk mail, phone books, flattened cardboard (cut to 3' x 3' pieces), plastic bottles, and plastics containers number 1-7, glass bottles and jars, aluminum cans, aluminum foil and pie tins, and tin or steel cans. **NO PLASTIC BAGS PLEASE.** All materials may be placed in the same bin.



Moving boxes - give them away, flatten them and place at curbside on your regular recycling day (cut to 3' x 3' pieces), or take them to the local mini transfer and recycling facility.



Tires - Car and street size pickup truck tires (up to 25 inches in diameter) may be collected on your recycling day. You are allowed up to six (6) tires per year. Do not place the tires in your recycling bin. Place the tires, with or without rims, at the curb on the recycling day. You do not have to schedule for this service.



### APPLIANCES/WHITE GOODS

White goods are washing machines, refrigerators, stoves, dryers, water heaters and similar appliances. The appliances cannot be taken to the County Landfill along with other household trash. These items are taken to be recycled. We schedule special collections for appliances each week, usually on Fridays. [Please call 575-5050 to schedule an appliance pickup.](tel:575-5050)

**SAFETY TIP:** For safety purposes, remove the door from refrigerators and freezers before placing it at the curb. We also ask that you remove the food from refrigerators and freezers before placing them curbside.

**SAFETY TIP:** Do not place white goods near or under power lines, telephone boxes, etc. This could impede access to the appliances.

## USED OIL

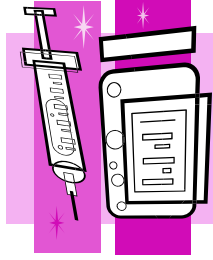
The City does not accept any used oil products for disposal. Residents may take their used oil to either the local Advanced Auto Parts store or Wal-Mart for disposal (do not place plastic used oil containers in your recycling bin). Motor oils and used oil filters may also be taken to the Mid-County Mini-Transfer Station in Murdock (see page 12).

## HOW TO DISPOSE OF HOUSEHOLD HAZARDOUS WASTE



These are items that **should not** be placed in your household trash for collection. Items such as antifreeze, batteries, cleaners/polishers, gasoline/kerosene, pesticides/herbicides, pool chemicals, mercury, motor oil, used oil filters, paint, stains and varnishes, are considered Household Hazardous Waste. You can carefully transport the items to the Charlotte County Mid-County Mini-Transfer and Recycling Facility in Murdock (see page 12). Contact them at 764-4360.

## NEEDLES/SHARPS



- There are now 2 locations for County & City residents to pick up and drop off sharps containers - 1) The County Mini-Transfer Station (see page 12) and 2) The City of Punta Gorda Fire Dept. Office in the Public Safety Building at 1410 Tamiami Trail, Punta Gorda (Mon - Fri, 8:00 a.m. to 4:30 p.m.).

These are the only locations in the County (other than Englewood) that allow you to drop off a used sharps container.

Another service provided by the Punta Gorda Fire Department is the Medication Take-Back programs. This is the only location in Charlotte County for this program. The program is a responsible way to dispose of expired or unused prescription or over the counter (OTC) medicines. Residents may stop by the Fire Station to dispose of these items.

CHARLOTTE COUNTY MINI-TRANSFER  
AND RECYCLING FACILITY

This is a **free** facility for use by Charlotte County Residents. Proof of residency is required - a valid driver's license, utility or tax bill will be accepted. A Post Office Box address will not be accepted.

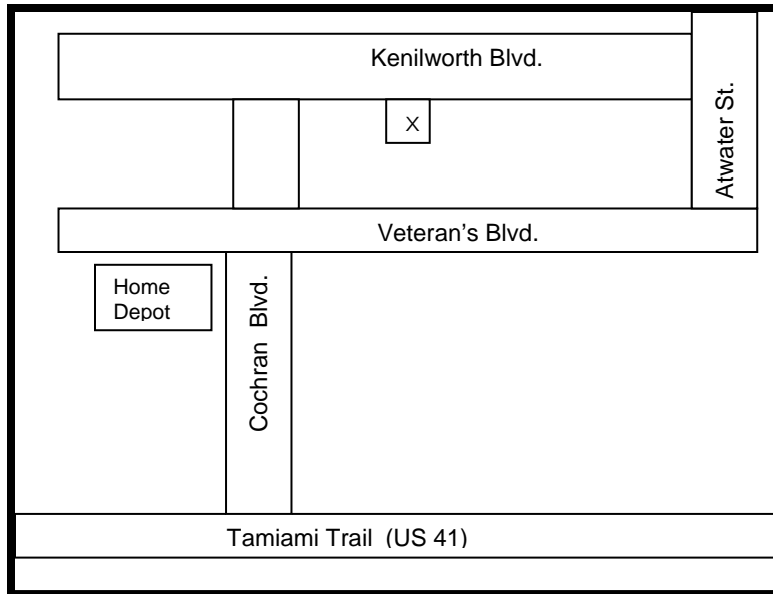
It is located at 19675 Kenilworth Blvd in Murdock (Port Charlotte). It is open Tuesday through Saturday from 9 a.m. to 4 p.m. For more information on this facility, or a complete list of items accepted, please call the Charlotte County Environmental and Extension Services at 764-4360 or on the web at [www.charlottecountyfl.com](http://www.charlottecountyfl.com).

The Mini-Transfer and Recycling Facility accepts the following items:

**Recycling:** newspapers, magazines, office paper, brown paper bags, paperboard cartons, dairy and juice containers, junk mail, phone books, flattened cardboard, plastic bottles, and plastics containers number 1-7, glass bottles and jars, aluminum cans, aluminum foil and pie tins, and tin or steel cans.

**Misc. Materials:** Furniture, Appliances, Scrap Metals, Pipe, Metal Frames, Lumber, Wallboard, Insulation, Yard/Landscaping Waste.

**Special Wastes:** Household Hazardous Waste, Paints and Pesticides, Rechargeable Batteries, Television and Computer Monitors, Used Hypodermic Needles (Sharps), Lead-Acid Batteries, Motor Oils and Used Oil Filters, Automobile and Pick-Up Truck Tires.



**Driving directions from Punta Gorda:**

Drive 41 North to Cochran Blvd. (formerly Toledo Blade Blvd).

Turn right onto Cochran, continuing past Home Depot.

Continue on Cochran Blvd. across Veteran's Blvd. to Kenilworth Blvd.

Turn right on Kenilworth to the Mini Transfer Station.

## HOLIDAY SCHEDULE



The City of Punta Gorda will NOT collect trash on the following four (4) holidays:

New Year's Day  
Independence Day  
Thanksgiving Day  
Christmas Day

Your collections will resume on the next regularly scheduled day.

**The City of Punta Gorda government offices observe the following holidays each year:**

**New Year's Day  
Martin Luther King Day  
President's Day  
Memorial Day  
Independence Day  
Labor Day  
Veteran's Day  
Thanksgiving (2 days)  
Christmas (2 days)**

**All City offices will be closed on these holidays.**

The City will also issue press releases regarding holiday closures and collection schedules.

## FREQUENTLY CALLED NUMBERS

Animal Welfare League	625-6720
Animal Control (Charlotte Co.)	833-5684
C.C. Environmental Services	764-4360
<b>(LANDFILL INFO)</b>	
Charlotte Co. Public Works	575-3600
Charlotte Co. Sheriff	639-2101
Charlotte Co. Utilities	964-4300
Chamber of Commerce	639-2222
Cooper St. Rec. Center	639-3034
Charlotte Co. Co-op Extension	764-4340
FPL	639-1106
Health Department	743-1266
Library	639-2049
Mosquito Control	764-4370
Peace River Wildlife Center	637-3830
PGI Civic Association	637-1655
Punta Gorda Fire Dept	575-5529
Punta Gorda Police Dept	639-4111
Post Office	800-275-8777
Waste Management	629-1106
Waste Services	575-6000
<b>(Construction debris)</b>	

**City of Punta Gorda  
Solid Waste Division  
326 W. Marion Avenue  
Punta Gorda, FL 33950**